



G-SERIES CASSETTE MOWER

INSTRUCTION MANUAL



| Applications | FT Range | Razor Ultra | Razor | Simplex Range | SuperSix Range | G660 G760 G860 | G26D G30D G34D | Premier Range | Verticut TT | S500 PLUS | Bray Hand Tools |
|-----------------------------|----------|-------------|-------|---------------|-------------------------|-------------------------|-------------------------|---------------|-------------|-----------|-----------------|
| Bowls, Croquet, Tennis | ● | ● | ● | | Croquet and Tennis only | Croquet and Tennis only | Croquet and Tennis only | Tennis Only | ● | ● | ● |
| Football, Hockey, Rugby | | | | | | ● | ● | ● | | ● | |
| Cricket – Wicket | ● | ● | ● | | | | | | ● | ● | ● |
| Cricket – Square | ● | ● | ● | ● | ● | ● | ● | ● | ● | ● | ● |
| Cricket – Outfield | | | | | | ● | ● | ● | | | |
| Golf – Tees | ● | ● | ● | ● | ● | ● | ● | | ● | ● | ● |
| Golf – Greens | ● | ● | ● | | | | | | ● | ● | ● |
| Ornamental/Lawns | ● | | | ● | ● | ● | ● | ● | ● | ● | ● |
| Local Authority/Contractors | ● | ● | ● | ● | ● | ● | ● | ● | ● | ● | ● |



NOTE:-

THIS INFORMATION IS INTENDED FOR GUIDANCE PURPOSES ONLY. WE RECOMMEND THAT YOU DISCUSS YOUR SPECIFIC REQUIREMENTS WITH OUR HEAD OFFICE, SALES MANAGERS OR YOUR LOCAL DENNIS DEALER

CERTIFICATE OF CONFORMITY

G-Series Cylinder mowers powered by Honda GX Petrol Engine

Manufacturer:- Howardson Ltd, Howardson Works, Kirk Langley, Derby, DE6 4NJ. UK

Owner of Technical Document:- Mr I.D. Howard, Howardson Ltd, Howardson Works Kirk Langley, Derby, DE6 4NJ, UK

I the under signed Declare that these machines:-

| Model | Cutting Width | Power (Honda) | Measured Sound Power Level | Guaranteed Sound Power Level | Serial Number |
|-------|---------------|---------------|----------------------------|------------------------------|----------------------|
| G660 | 26" (660mm) | GX160 | 95 Lwa | 98dB Lwa | See product ID Range |
| G760 | 30" (760mm) | GX160 | 95 Lwa | 98dB Lwa | See product ID Range |
| G860 | 34" (860mm) | GX200 | 95 Lwa | 98dB Lwa | See product ID Range |

Tested at:- Howardson Works test site September 2011

Complies with the applicable requirements of:-

- Machine Directive 2006/42/EC
- Noise Directive 2000/14/EC (Annex VI Procedure 1)

Managing Director



Ian Howard

SERIAL NUMBERS



NOTE:-

MAKE A NOTE OF THE SERIAL NUMBER OF YOUR MACHINE AND ALWAYS QUOTE IT IN ANY COMMUNICATION WITH PERSONNEL AT DENNIS.

MACHINE SERIAL NUMBER

ENGINE SERIAL NUMBER

INTRODUCTION

The reliability and quality of performance of the **DENNIS G-SERIES** depends upon some simple care maintenance carried out regularly. This manual has been prepared to allow the user to carry out all such work.

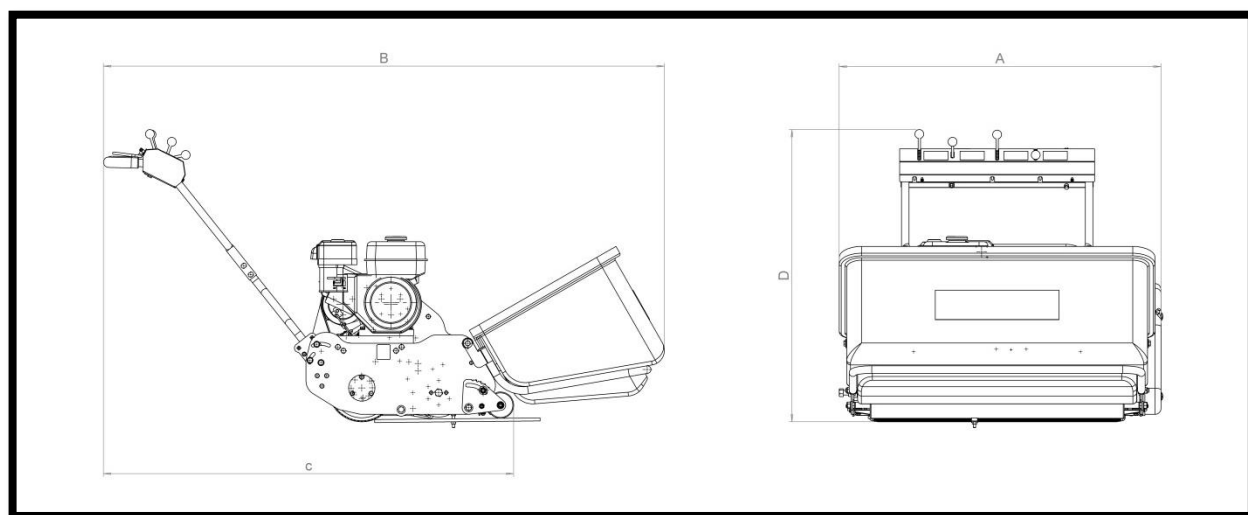
It is advisable to read the instructions carefully. Proper care and attention will enable the machine to give a continuous, satisfactory, and reliable service. Failure to carry out regular lubrication and maintenance as outlined in this manual may render any guarantee or warranty invalid.

In the case of any difficulty, or if further information or advice is required, our Service Department is always at your call. In the interests of speed and accuracy of information please quote the serial numbers of the machine and engine when making enquiries.

For the machine, this is to be found on a plate attached to the side frame. The engine number is stamped on either the crank case or the gear casing facing towards the front of the machine. We suggest you write the numbers on the front page of this book.

| | Page |
|------------------------------------|---------|
| Declaration of Conformity..... | 2 |
| Serial Numbers..... | 2 |
| Introduction..... | 2 |
| Technical Data..... | 3 |
| Important Safety Instructions..... | 3 |
| Operating Instructions..... | 4 - 6 |
| Maintenance and Lubrication..... | 7 |
| Parts Listings..... | P0 – P7 |

TECHNICAL DATA



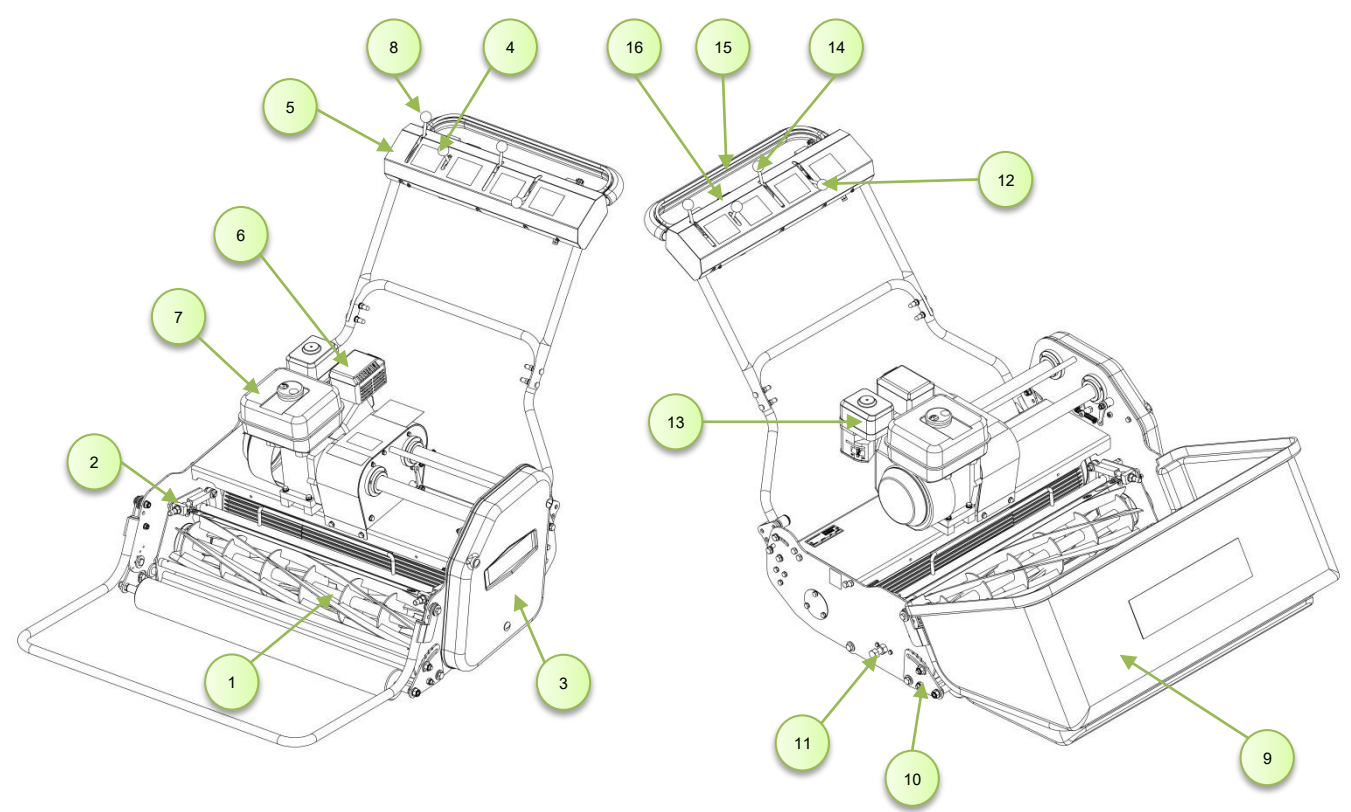
| MODEL | G660 | G760 | G860 |
|--------------------------------------|--|--|--|
| A – WIDTH (mm) | 884 | 984 | 1084 |
| B – LENGTH with Grass Box (mm) | 1635 | 1635 | 1635 |
| C – LENGTH without Grass Box (mm) | 1121 | 1121 | 1121 |
| D – Height (mm) | 1119 | 1119 | 1119 |
| Weight (Kg) | 148 | 156 | 166 |
| Cutting Width (mm) | 660 | 760 | 860 |
| Cylinder (Number of Blades) | 6, 8 | 6, 8 | 4, 6, 8, 11 |
| Height of Cut (mm) | 9 - 56 | 9 - 56 | 9 - 56 |
| Cut Performance (Clips/M) (4 Blade) | - | - | 68 |
| Cut Performance (Clips/M) (6 Blade) | 103 | 103 | 103 |
| Cut Performance (Clips/M) (8 Blade) | 137 | 137 | 137 |
| Cut Performance (Clips/M) (11 Blade) | - | - | 189 |
| Engine | Honda GX160 | Honda GX160 | Honda GX200 |
| Drive System | "V" Belt | "V" Belt | "V" Belt |
| Final Drive | Poly "V" high performance belts under constant tension | Poly "V" high performance belts under constant tension | Poly "V" high performance belts under constant tension |
| Hand Arm Vibration | 2.6 | 2.6 | 2.6 |
| Measured Sound Power Level | 95 | 95 | 95 |
| Guaranteed Sound Power Level | 98 | 98 | 98 |

Manufactured with a 26" (66cm), 30" (76cm) or 34" (86cm) cutting width, this range of machines are powered by either a 5.5hp (26" & 30") or 6.5hp air cooled, single cylinder, four stroke petrol engine.

The rear roller and cutter are controlled independently via belt clutches operated from the console on the upper handle bar. (ITEM 5). A parking brake is fitted for added safety when working on sloping ground.

In the design of the machine, special attention has been given to the importance of easy service and maintenance with the construction based on a sectional assembly system. These are the Engine Unit, the Cassette Unit, the Rear Roller Unit and the Front Roller Unit, each of which can be readily removed individually from the main Frame Chassis Unit.

The interchangeable cassette system allows a variety of cassettes to be used for varying applications.



| NUMBER | PART | NUMBER | PART |
|--------|----------------------------|--------|---------------------------|
| 1 | Cassette | 9 | Grass Box |
| 2 | Bottom Blade Adjuster Knob | 10 | Cutting Height Adjustment |
| 3 | Belt Guard | 11 | Cassette Retaining Pin |
| 4 | Throttle Control Lever | 12 | Cassette Control Lever |
| 5 | Operating Console | 13 | Air Filter |
| 6 | Exhaust | 14 | Driving Control Lever |
| 7 | Fuel Tank | 15 | Deadman's Handle |
| 8 | Brake lever | 16 | On/Off Switch |

In order to operate the machine safely please follow these Health and Safety guidelines

TRAINING



CAUTION – READ THE INSTRUCTIONS CONTAINED IN THIS MANUAL WITH CARE. IF YOU ARE IN ANY DOUBT PLEASE ASK YOUR EMPLOYER OR CONTACT US DIRECT AT **DENNIS**

- Be familiar with the controls and the proper use of the equipment.
- Never allow children or people unfamiliar with these instructions to use the mower. Local regulations or insurance may restrict the age of the operator.
- Never mow while people, especially children, or pets are near by.
- Keep in mind that the operator or user is responsible for accidents or hazards occurring to the other people or their property.

PREPARATION

- While mowing always wear substantial footwear and long trousers. Do not operate the mower barefoot or in open sandals.
- Thoroughly inspect where the equipment is to be used and remove all stones, sticks, wire, bones and other foreign objects.



WARNING – PETROL IS HIGHLY FLAMMABLE AND WILL DAMAGE GRASS IF SPILT.

- A. Store fuel in containers specifically designed for this purpose.
 - B. Refuel out doors and do not refuel whilst smoking.
 - C. Add fuel before starting the engine. Never remove the cap of the fuel tank or petrol while the engine is running or when the engine is hot.
 - D. If petrol is spilt do not attempt to start the engine but move the machine away from the area of spill and avoid creating and sources of ignition until the vapours have dissipated.
- Replace damaged or faulty silencers.
 - Before using the machine always inspect the safety devices including the cut off switch and the blades for excessive wear or damage. Replace if necessary.

OPERATION

- Do not operate the engine in a confined space where dangerous CARBON MONOXIDE fumes can collect.
- Mow only in daylight or good artificial light
- Avoid operating the machine in wet grass where feasible.
- Always be sure of your footing on slopes.
- Walk. Never run.
- Walk across the face of slopes, never up and down.
- Exercise extreme care on slopes when changing direction.
- Do not mow excessively steep slopes.
- Use extreme caution when reversing or pulling the machine towards you.
- Stop the blades in the mower has to be tilted for transportation when crossing surfaces other than grass and when transporting the mower to and from the area to be mown.
- Never operate the mower with defective guards or shields or without safety devices, for example without the deflector plate or grassbox in place.
- Do not change the engine governor settings or over speed the engine.
- Disengage all blades and drive clutches before starting.
- Start the engine carefully following the instructions with feet well away from the blades.
- Do not tilt the mower when starting the engine.
- Do not put hands or feet near the under rotating parts. Keep clear of the discharge opening at all times.
- Never pick up or carry the mower while the engine is running.

FOR THE LOCATION OF CONTROLS AND COMPONENTS REF “MACHINE DESCRIPTION” PAGE.

ON / OFF SWITCH (ITEM 16)

This switch stops the engine and can be used to do so at anytime during the operation of the machine. Ensure it is in the “ON” position before attempting to start the engine.

DEADMANS CONTROL (ITEM 15)

This is an operator presence control. The engine will tick over without need for this to be depressed when the cylinder and drive are disengaged. This must be depressed before the drive or cylinder can be engaged. Failure to do so will cause the engine to stop.



NOTE – IF THE “DEADMANS CONTROL LEVER” IS DEPRESSED WHILE THE PARKING BRAKE IS ON THE ENGINE WILL STOP.

PARKING BRAKE CONTROL (ITEM 8)

This controls the parking brake. It is only to be engaged when the machine is stationary, it is NOT to stop the machine. Push lever forwards to engage and pull back to disengage.



NOTE - THE “PARKING BRAKE” NEEDS TO BE DISENGAGED FOR THE ENGINE TO CONTINUE TO RUN.

THROTTLE CONTROL (ITEM 4)

This controls the RPM of the engine and the resultant speed of the machine. Pushing the lever forwards will increase the RPM, pulling it back returns the engine to idle.

DRIVE CONTROL (ITEM 14)

This controls the machine movement. Pushing the lever forwards will engage the belt clutch and cause the machine to drive. Returning it to the original position will cause the machine to stop.

CYLINDER CONTROL (ITEM 16)

This controls the cylinder drive. Pushing the lever forwards will engage the belt clutch and cause the cylinder to rotate. Returning it to the original position will cause the cylinder to stop.



CAUTION – BEFORE YOU OPERATE THIS MACHINE **YOU MUST READ AND STUDY THIS MANUAL IF YOU ARE IN ANY DOUBT PLEASE ASK YOUR EMPLOYER OR CONTACT US DIRECT.**

PREPARATION FOR USE

- Before commencing ensure the turf is free from stones and other obstructions which may damage the cassette unit.
- Set the height of the cut to the required level. (see general adjustments)
- Check the engine
- Fill the fuel tank 3/4 full with unleaded petrol.
- Always check the oil levels of the machine prior to commencing. Full details are given in the ENGINE manual, which accompanies this book. A daily check is recommended. (Recommended grade oil is SAE 10W-40).
- Disengage the cassette unit. (see general adjustments)
- Set the throttle control on the handle to the idle position.



CAUTION – **IMPORTANT INFORMATION PLEASE READ ALL THE DETAILS IN THIS SECTION AND FAMILIARIZE YOURSELF AND ALL MACHINE OPERATORS WITH THE CONTENTS.**

STARTING THE ENGINE

Once the preparatory steps have been completed as outlined on page 7 the engine may be started. (see manufacturer operating manual for full details).

1. Switch on the fuel tap.
2. Switch the handlebar “off switch” to **ON**, or depress deadmans handle.
3. Set the throttle control to a half open position.
4. Shift the choke lever to the appropriate position (Kubota engine set to START : Honda engine set to the close position). The choke is not required if the engine is warm or the air temperature is high.
5. Grasp the recoil start handle until resistance is felt, then pull it with force.
6. Do not allow the starter grip to snap back against the engine. Return it gently to prevent damage to the starting position.
7. Once the engine is started, gradually ‘open’ the choke lever (move the lever towards the RUNNING, or OPEN position). Warm-up running of 3-5 minutes is recommended.

STOPPING THE ENGINE

1. Set the throttle control to the CLOSED position.
2. Switch the handlebar cut off to OFF or release deadmans handle.
3. Close the fuel tap.

TO COMMENCE DRIVING (TRANSPORT BETWEEN SITES / NO CUTTING)

- Ensure the “parking Brake” is disengaged.
- Depress the “Deadmans Handle” (Item 15)
- Push the “Drive Control Lever” (Item 14) forwards.
- Set the “Throttle Control Lever” to increase / reduce speed.

TO STOP DRIVING

- Pull the “Drive Control Lever” (Item 14) backwards.

TO COMMENCE CUTTING

- Depress the “Deadmans Handle” (Item 15)
- Push the “Cylinder Control Lever” (Item 16) forwards.
- Push the “Drive Control Lever” (Item 14) forwards.
- Set the “Throttle Control Lever” to increase / reduce speed.

TO STOP CUTTING

- Pull the “Drive Control Lever” (Item 14) backwards.
- Pull the “Cylinder Control Lever” (Item 16) backwards.
- Release the “Deadmans Handle” (item 15)



NOTE – *Releasing the “Deadmans Control Lever” with the cutter engaged will cause the engine to stop.*

FITTING THE GRASSBOX (Item 9)

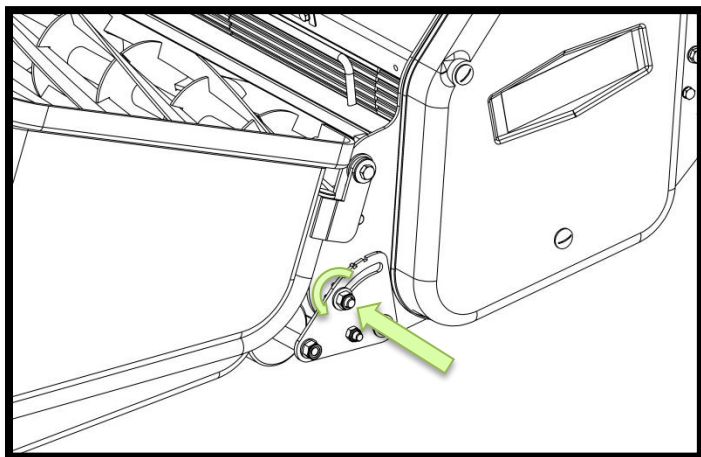
- Disengage the cylinder drive and wait for the cutter to stop rotating.
- Hold the grassbox firmly on the lid of the aperture, place the lower front of the box against the front of the tubular cradle.
- Pivot the box about the cradle until it sits securely in position.

SETTING FOR HEIGHT OF CUT

Always stop the engine before adjusting the height of cut. Failure to do this may result in serious injury. The length of grass after cutting and the depth of SCARIFICATION / DETHATCHING / BRUSHING, depends on the setting of the front roller in relation to the main frame of the machine.

To set:

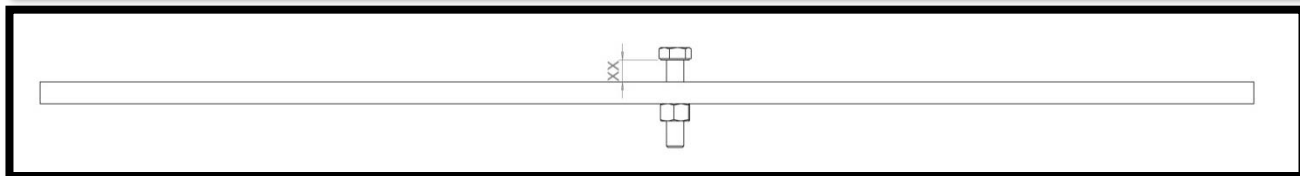
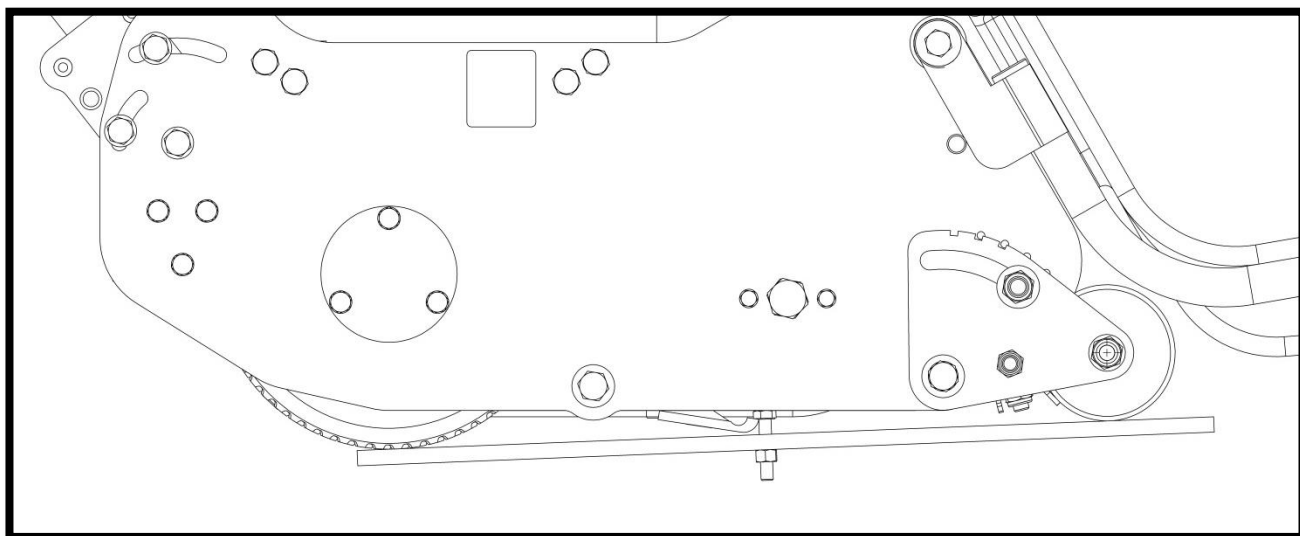
- Slacken the clamp nuts on the front roller quadrants (see image opposite) [19mm spanner]
- Rotate the quadrants, raising and lowering the machine. As a guide, there are notches in the quadrant and holes in the side plate. Align these on both sides to level the machine,



NOTE – DO NOT ATTEMPT TO USE THE DETHATCHING CASSETTES OR BRUSH CASSETTES ON TOO LOW A SETTING AS THIS WILL RESULT IN DAMAGE TO THE BLADES AND BRUSHES.



NOTE – DO NOT ATTEMPT TO SCARIFY ON TOO LOW A SETTING WHEN THE GROUND CONDITIONS ARE DRY AS THIS MAY CAUSE THE CLUTCH TO SLIP.



To check the height of cut and that the machine is level, the setting bar can be used (229524). Place the bar between the front and rear rollers, resting the underside of the bolt head on the lip of the shear blade.

A ruler can be used to set the setting bar to the correct position. You are measuring the distance between the bar and the underside of the button head screw. ('XX' in the image above)

Remember height of cut is effected by moisture of turf , weight of machine and the thatch density. Different makes of machine cut at different heights when set to the same position with the setting bar. We suggest you set it to a couple of mm above your planned height and then come down in height by trial.

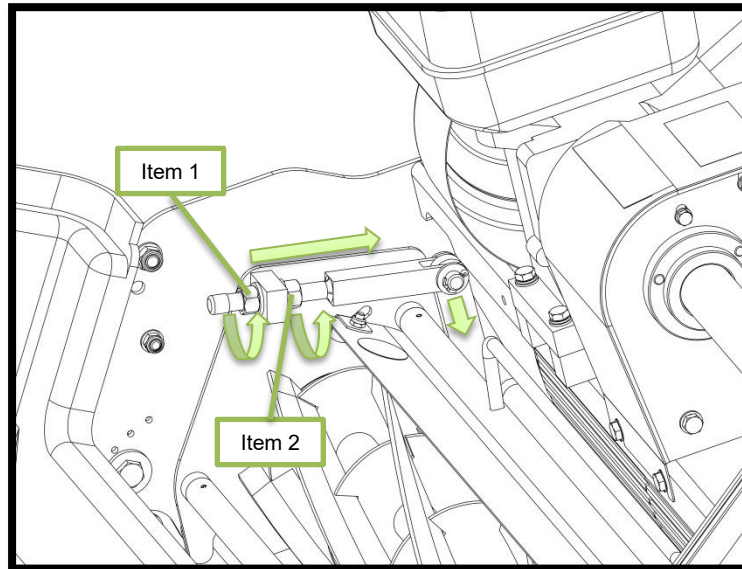
Always check height of cut/operation with the setting bar provided. Check in two positions i.e. one at either end of the cassette. Failure to do this could result in an uneven cut.

SETTING THE CYLINDER

The Cylinder cassette can be set either in or out of the machine. To remove the cassette see following page.

To Set:

- Slacken 2-off lock nuts (Item 1) [19mm spanner]
- Rotate nut (Item 2) anti-clockwise to bring the blade towards the cylinder.
- Check the setting using thin paper along the length of the cylinder.
- Adjust until it cuts across the whole length.
- When set, tighten the lock nut (Item 1)
- Recheck adjustment.
- DO NOT set the cylinder hard to the bottom blade. This will cause excessive wear of both components and increase fuel consumption.

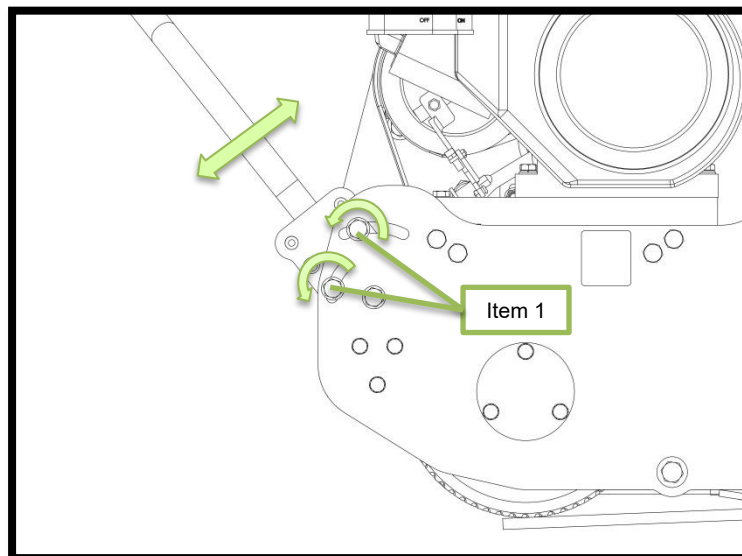


HANDLEBAR ADJUSTMENT

The "Handle Bars" are adjustable to achieve the correct working height for the operator.

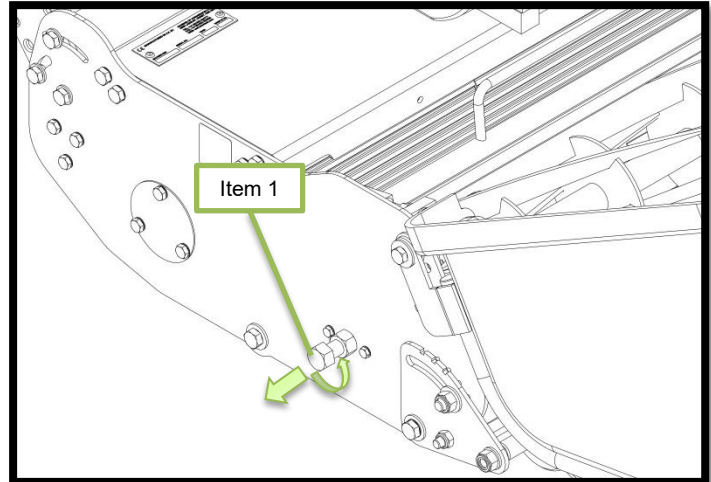
To Set:

- Slacken off 4-off nuts (Item 1) $\frac{1}{4}$ " turn [17mm spanner]
- Raise / lower the "Handle Bar" to the desired position.
- When set, tighten the nuts (Item 1)



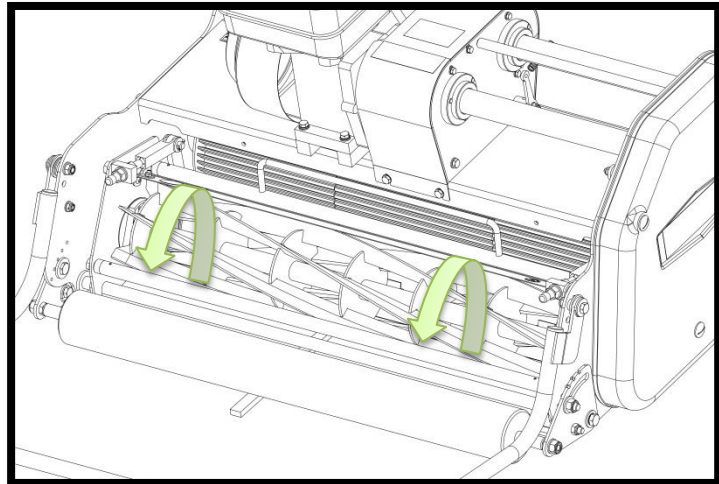
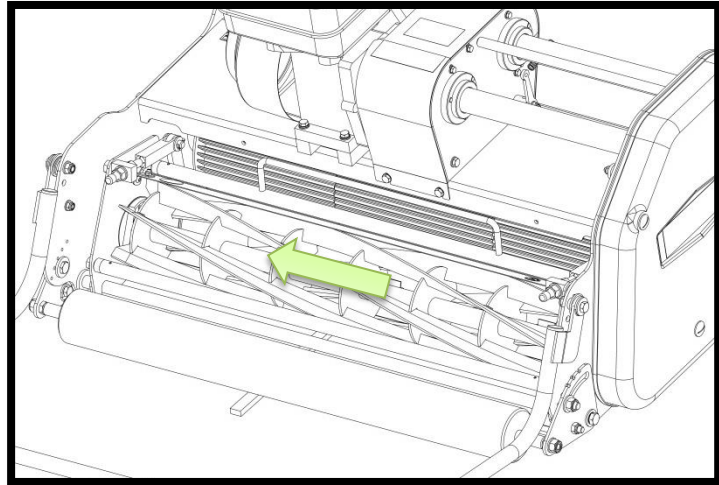
To remove the cassette unit for maintenance or to exchange cassettes the following procedure should be followed:-

1. Unscrew the bolt (Item 1) [24mm Spanner] for about half-an-inch (13mm) until the pip end is inside the nut on the side frame.
2. Slide the cassette unit along the tie bars as far as it will go until the cutter nut and coupling is clear of the three pins in the driving coupling.
3. Remove the unit from the chassis by lifting in a swinging motion from the back.



To replace the cassette unit:-

1. Place the front slots of the cassette unit frames on the two front retaining pins seen projecting from inside the frame.
2. Carefully lower the unit in a downward swinging motion until the rear slots of the cassette unit frame rest on the cross tie bar.
3. Move in a lateral direction away from the retaining pin until the three holes of the cassette nut and coupling are in full engagement with the three pins in the driving coupling.
4. Screw up the bolt (Item 1) [24mm Spanner], engaging the hole in the side frame on the opposite side. Do not over tighten.



ENGINE

The machines are fitted with a Honda GX160 or GX200 petrol engine.
For full specifications please refer to the manufacturers instruction manual included.

| Area | Maintenance | First 4 Hours | First Month / 20 Hours | 6 Months / 100 Hours |
|------------|-------------------------|---------------|------------------------|----------------------|
| Engine Oil | Check Level | ✓ | | |
| Engine Oil | Change | | ✓ | ✓ |
| Air Filter | Check Condition / clean | | ✓ | ✓ |
| Spark Plug | Change | | | ✓ |

OIL / FUEL & QUANTITY – SPARK PLUG TYPE

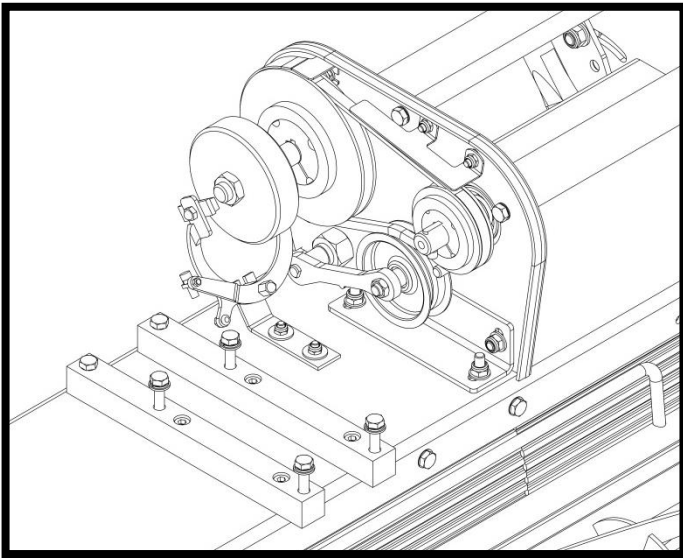
| Engine Model | Oil Types | Quantity (Ltr) | Fuel Type | Capacity (Ltr) | Spark Plug Type | Electrode Gap (mm) |
|----------------------------|------------|----------------|-----------|----------------|-----------------|--------------------|
| Honda GX160 & Gx200 Petrol | SAE 10W-40 | 0.6 | unleaded | 3.1 | BM6ES or BPR6ES | 0.7 – 0.8 |

ROLLER CLUTCH

The primary rear roller drive belt is shown in the image opposite. This is a special Kevlar V belt design for clutching applications. The Rear roller clutch pulley moves in to tension the belt via control cable. The tension in the cable can be adjusted as shown [13mm spanner]

Under tensioning this belt will lead to slip and cause rapid wear. Over tension will put excessive strain on the belt and bearings.

Under tensioning leads to belt slip, causing rapid wear; over tensioning means excessive strain on the belt and bearings. Between these two extreme conditions is a reasonable range of tension within which the belt will operate. Belt tension can be assessed by the 'deflection' method.



NOTE – CORRECTION CAN BE MADE BY ADJUSTMENT OF THE BELT TENSIONERS. REMOVE THE DRIVING BELT COVER. THE BELT TENSIONERS ARE RETAINED IN A SLOTTED HOLE ALLOWING ADJUSTMENT TO BE MADE ONCE THE HOLDING HEXAGON HEADED BOLTS HAVE BEEN LOOSENED. WHEN ADJUSTED CORRECTLY THE TENSIONERS SHOULD STILL ROTATE EASILY WITH FINGER PRESSURE. ENSURE THE TENSIONER BOLTS ARE SECURE BEFORE REPLACING THE COVER.

“Belts will be sufficiently tensioned if the deflection force applied at mid span to produce a deflection equal to 16mm per meter of span distance falls between 5 and 9 Newton's per Rib” (TBA Belting).

In practical terms this relates to about 5mm of deflection, under moderate finger pressure, on the non tensioner side.

If fitting new belts it is advisable to observe the drive for the first 20-30 minutes. It may be necessary to make an adjustment to compensate for the normal drop in tension during he run –in period.

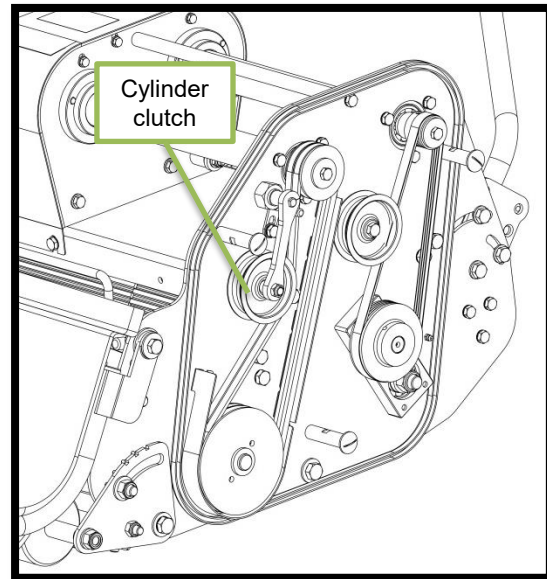
CYLINDER CLUTCH

The Cylinder drive belts are shown in the image opposite. There are special Cotton covered Kevlar cored V belts fitted in pairs and are designed for clutching applications. The cylinder clutch pulley moves into tension the belt via a control cable. The tension in the cable can be adjusted.

Under tensioning this belt will lead to slip and cause rapid wear. Over tensioning will put excessive strain on the belt and bearings.

CABLE ADJUSTMENT

Over time the cables that operate the clutch pulleys and the brake will need adjusting. This adjustment can be carried out at either end of the cables [10mm spanner]



NOTE – NEITHER CLUTCHES OR BRAKE SHOULD OPERATE WITH THE CONTROLS IN THE OFF POSITION.



NOTE – ENSURE THE LOCK NUTS ARE TIGHT AND SECURE AND CHECK OPERATION IS SATISFACTORY BEFORE REPLACING THE CLUTCH COVER AND SCREWS.

Storage

The machine should always be kept in a clean dry place, free from condensation. After use ensure that the machine is thoroughly clean, dry and free from grass and mud. Before off season storage smear a thin layer of grease on to the cutter blades and the shear blade.

Under no circumstances must the machine be steam cleaned as this may remove grease from the pre packed bearings.

Because of the nature of lead free petrol we recommend that if the machine is being left unused for more than 2 weeks the carburettor is run dry. Allow the engine to run out of fuel with the fuel tap switched off.

REAR ROLLER

(6-months)

The main drive roller is split into three sections incorporating a differential gear system running in an oil bath. The old oil should be drained off and the bath replenished with 1 pint (550ml) of clean oil.

(1-month)

A grease point is located under the belt guard on the side plate of the machine. This is to lubricate the internal spur gear that provides drive to the rear roller. Apply one pump of grease. Do not over grease.

CONTROL LEVERS AND CABLES

(2-months)

Apply a small amount of oil to the control cables. Flow down the protective cables can be assisted by operating the lever a few times after lubricating.

FRONT ROLLER ADJUSTERS

(2-months)

Apply a small quantity of copper grease or similar to the adjuster studs to prevent corrosion and ease adjustment.

G-Series Guide to Cassettes and Their Use



| | | | |
|-------------------------|---------------|---------------|---------------|
| Order reference number: | G660 – D055-1 | G760 – D053-1 | D860 – D054-1 |
|-------------------------|---------------|---------------|---------------|

6 BLADE CYLINDER

High quality British steel blades in a single spiral format. Incorporating easy to set cutter adjustment.



| | | | |
|-------------------------|---------------|---------------|---------------|
| Order reference number: | G660 – D055-7 | G760 – D053-7 | D860 – D054-7 |
|-------------------------|---------------|---------------|---------------|

8 BLADE CYLINDER

High quality British steel blades in a single spiral format. Incorporating easy to set cutter adjustment.



| | | | |
|-------------------------|---|---|---------------|
| Order reference number: | - | - | D860 – D054-9 |
|-------------------------|---|---|---------------|

11 BLADE CYLINDER

High quality British steel blades in a single spiral format. Incorporating easy to set cutter adjustment.



| | | | |
|-------------------------|---------------|---------------|---------------|
| Order reference number: | G660 – D055-3 | G760 – D053-3 | D860 – D054-3 |
|-------------------------|---------------|---------------|---------------|

1mm SCARIFIER

1mm thick replaceable, wear resistant blades. 12mm spacing for thatch removal throughout the season and autumn/spring renovation work.



| | | | |
|-------------------------|---------------|---------------|---------------|
| Order reference number: | G660 – D055-4 | G760 – D053-4 | D860 – D054-4 |
|-------------------------|---------------|---------------|---------------|

2mm SCARIFIER

2mm thick replaceable, wear resistant blades. 12mm spacing for thatch removal throughout the season and autumn/spring renovation work.



| | | | |
|-------------------------|-----------------|-----------------|-----------------|
| Order reference number: | G660 – D055-4TT | G760 – D053-4TT | D860 – D054-4TT |
|-------------------------|-----------------|-----------------|-----------------|

2mm SCARIFIER TUNGSTEN TIPPED

The ultimate scarifier with tungsten tipped blades for heavy duty thatch removal throughout the season and autumn/spring renovation work .



| | | | |
|-------------------------|--------------------|--------------------|--------------------|
| Order reference number: | G660 – D055-5 soft | G760 – D053-5 soft | D860 – D054-5 soft |
|-------------------------|--------------------|--------------------|--------------------|

BRUSH SOFT BRISTLE

For moss and debris removal and use as a light scarifier for final pre cut preparations.



| | | | |
|-------------------------|--------------------|--------------------|--------------------|
| Order reference number: | G660 – D055-5 hard | G760 – D053-5 hard | D860 – D054-5 hard |
|-------------------------|--------------------|--------------------|--------------------|

BRUSH HARD BRISTLE

For moss and debris removal and use as a light scarifier for final pre cut preparations.



| | | | |
|-------------------------|---------------------|---------------------|---------------------|
| Order reference number: | G660 – D055-5 multi | G760 – D053-5 multi | D860 – D054-5 multi |
|-------------------------|---------------------|---------------------|---------------------|

BRUSH MULTI DENSE

For moss and debris removal and use as a light scarifier for final pre cut preparations.



Order reference number:

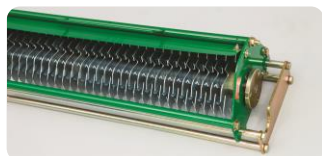
G660 – D055-2

G760 – D053-2

D860 – D054-2

VERTI-CUTTER

1mm thick 10 fingered replaceable discs. Regular use controls, thatch, lateral growth and the ingress of unwanted species such as annual meadow grass.



Order reference number:

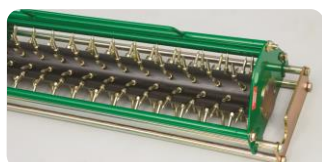
G660 – D055-2TT

G760 – D053-2TT

D860 – D054-2TT

VERTI-CUTTER TUNGSTEN TIPPED

Gives extra durability for heavy usage.



Order reference number:

G660 – D055-6

G760 – D053-6

D860 – D054-6

SORREL ROLLER

Replaceable spikes relieves surface tension and allows penetration of air, water and fertilizer to the root zone.

6 BLADE CYLINDER

- For cutting fine turf areas.

8 BLADE CYLINDER

- For cutting fine turf areas.

Settings – Expressed as above and below ground level i.e. by placing the setting bar between the front and rear rollers, the top of the bar represents ground level.

VERTICUTTER

Used from ground +3mm to ground -3mm to control thatch, cutting lateral growths and standing up lying grasses ready for cutting and lifting with the comb. Good for removing mosses. Start on the green at (say) +3mm



NOTE – **NOT** FOR CUTTING SOIL, ONLY THATCH

RESULT – Speed improvement on greens, reduced end of season maintenance. Promotes healthy plant growth, promotes strong roots, and maximises fertilizer penetration.

SCARIFIER

Used for ground to ground -10mm controlling thatch, removing thatch, cutting lateral growth, pruning roots, removing moss, aerating top layer for ingress of water, air, fertilizer and seed. Choice of 1mm or 2mm thick blades (generally 1mm used in summer, 2mm used in winter). Do not try to cut too deep – must be adjusted to suit conditions. Keep engine revs reasonably high with a slow forward movement to remove as much material as possible. The machine may tend to walk along on its own in some conditions.

RESULT – Speed increase of playing surface. Maximises fertilizer penetration & promotes strong healthy plant growth and strong roots.

BRUSH

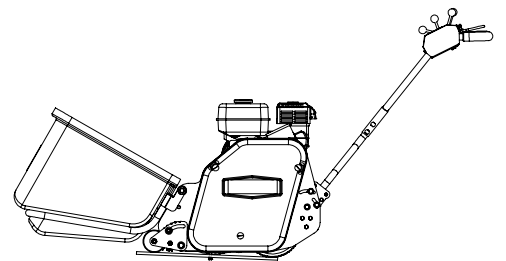
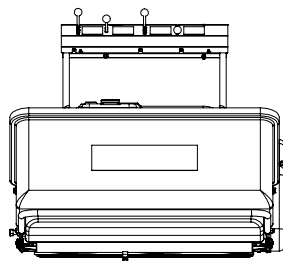
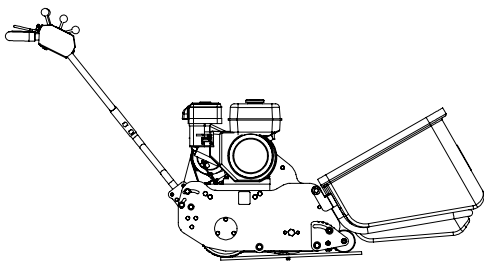
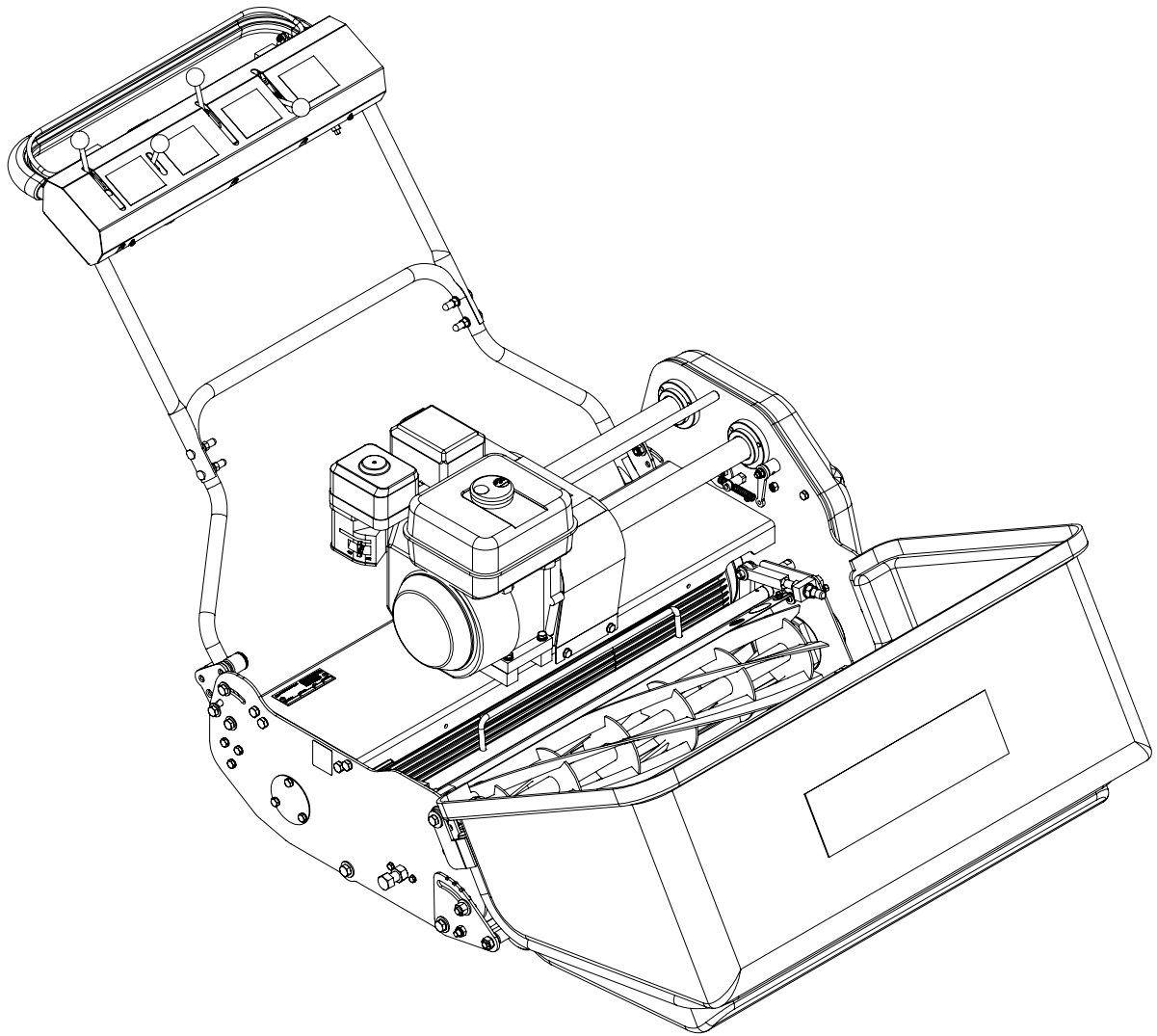
Used for light scarifying, brushing, removing debris, cigarette ends, pine needles, moss, excess top dressing etc. set at +3mm to +1mm for ground debris depending on conditions. Remove comb.

SORREL ROLLER NOT DRIVEN

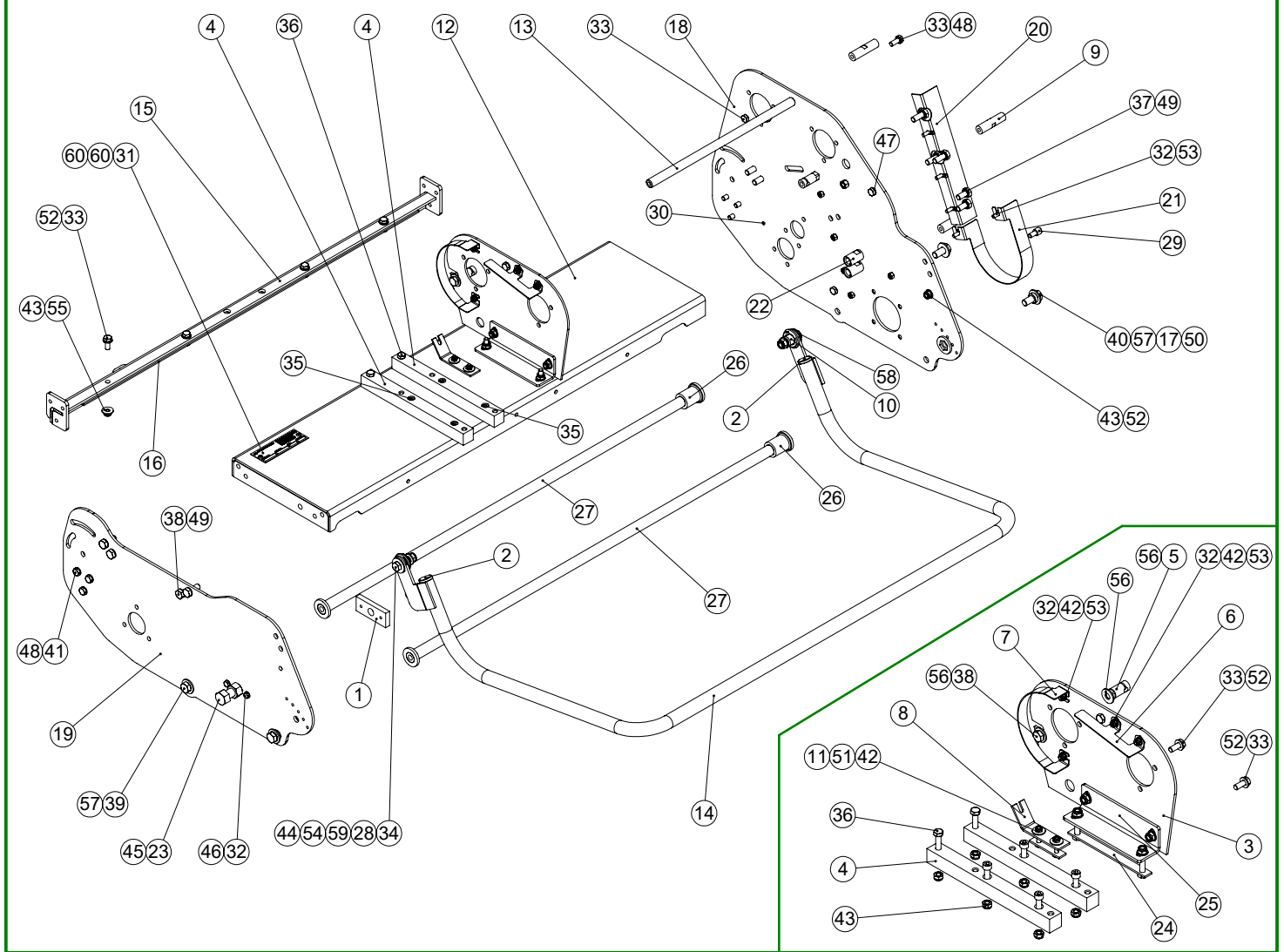
Used for surface pricking. Lets air, water fertilizer into the root zone. Good for over seeding and preparing damaged areas for repair. Reduces surface tension.

| | Bowls | Cricket | Golf |
|----------------|-------------|-------------------|-------------------|
| Verticutter | Monthly | Fortnightly | Monthly |
| Scarifier | 1-2 months | 1-2 months | 1-2 months |
| Brush | As required | As required | As required |
| Ironing roller | Match days | Pre-season | As required |
| Sorrel Roller | 1-2 weeks | Monthly / Repairs | Monthly / Repairs |

G-SERIES - PARTS BOOK



CHASSIS - MAIN ASSEMBLY



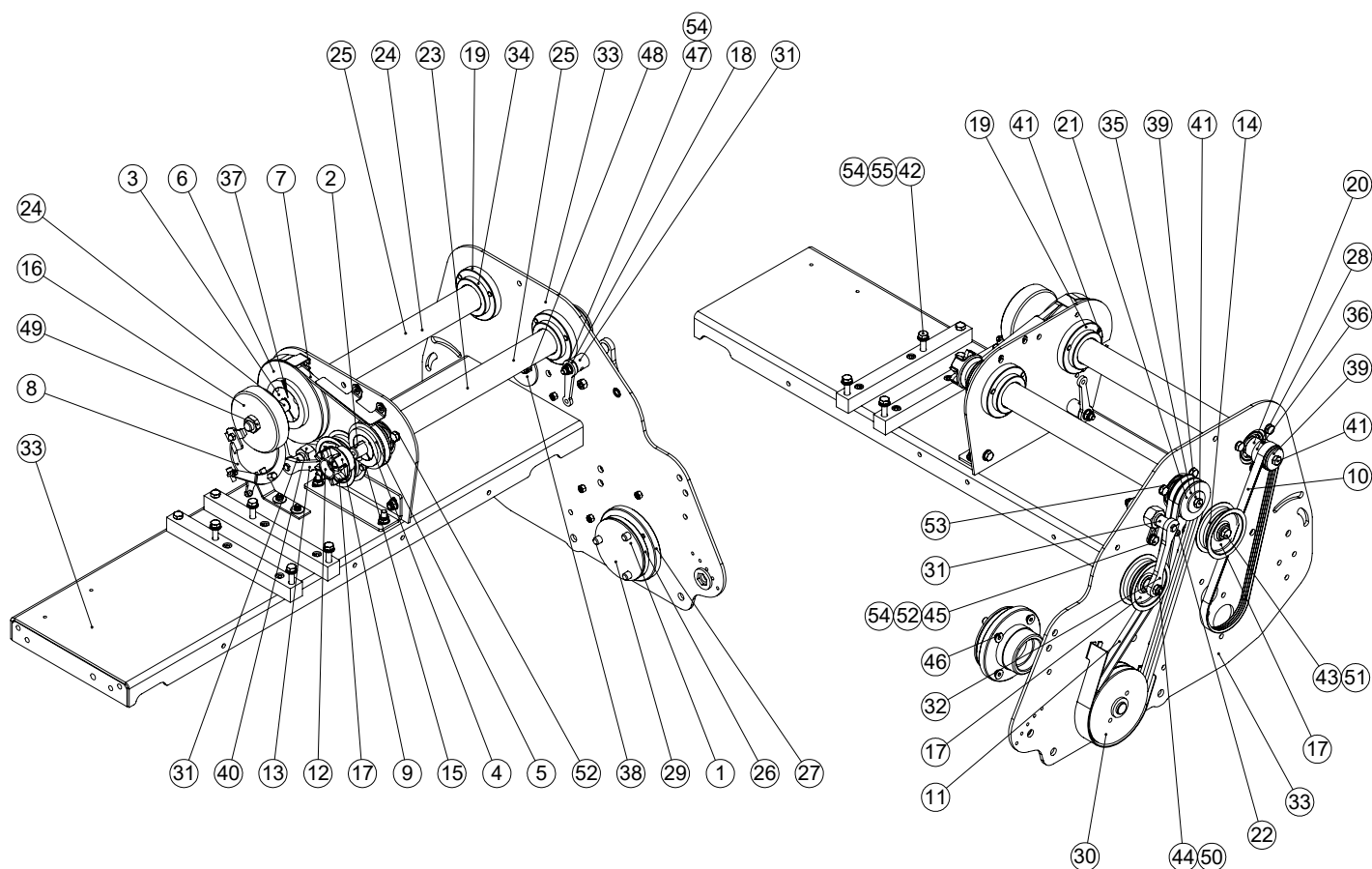
MODEL DIFFERENCES

| ITEM No | MODEL | PART NUMBER | DESCRIPTION | QTY |
|---------|-------|-------------|------------------|-----|
| 12 | G660 | 229250 | ENGINE BED 26" | 1 |
| 12 | G760 | 229251 | ENGINE BED 30" | 1 |
| 12 | G860 | 229252 | ENGINE BED 34" | 1 |
| 13 | G660 | 229253 | TIE BAR 26" | 1 |
| 13 | G760 | 229254 | TIE BAR 30" | 1 |
| 13 | G860 | 229255 | TIE BAR 34" | 1 |
| 14 | G660 | 229265 | CRADLE W.A 26" | 1 |
| 14 | G760 | 229266 | CRADLE W.A 30" | 1 |
| 14 | G860 | 229267 | CRADLE W.A 34" | 1 |
| 15 | G660 | 229515 | TOW BAR W.A 26" | 1 |
| 15 | G760 | 229269 | TOW BAR W.A 30" | 1 |
| 15 | G860 | 229270 | TOW BAR W.A 34" | 1 |
| 16 | G660 | 229516 | REAR SCRAPER 26" | 1 |
| 16 | G760 | 229272 | REAR SCRAPER 30" | 1 |
| 16 | G860 | 229273 | REAR SCRAPER 34" | 1 |
| 27 | G660 | 229666 | TIE BAR ASSY 26" | 2 |
| 27 | G760 | 230157 | TIE BAR ASSY 30" | 2 |
| 27 | G860 | 230155 | TIE BAR ASSY 34" | 2 |

CHASSIS - MAIN ASSEMBLY

| ITEM NO. | PART NUMBER | DESCRIPTION | Default/QTY. |
|----------|--------------|------------------------------|--------------|
| 1 | 171885_REV1 | CASSETTE THRUST PLATE | 1 |
| 2 | 228024_REV1 | 1" TUBE BUNG | 2 |
| 3 | 229000_REV1 | SUPPORT PLATE | 1 |
| 4 | 229004_REV2 | ENGINE BEARERS | 2 |
| 5 | 229005_REV2 | CABLE STOP | 2 |
| 6 | 229006_REV2 | BELT GUIDE ROLLER | 1 |
| 7 | 229007_REV2 | BELT GUIDE ROLLER PULLEY | 1 |
| 8 | 229035_REV1 | BRAKE BRACKET | 1 |
| 9 | 229115_REV2 | CHAIN CASE STUD | 3 |
| 10 | 229152_REV1 | PIVOT BUSH | 2 |
| 11 | 229153_REV1 | CLAMP PLATE ASSY | 1 |
| 12 | 229252_REV3 | ENGINE BED 34" | 1 |
| 13 | 229255_REV1 | TIE BAR 34" | 1 |
| 14 | 229267_REV1 | 34" CRADLE W.A. | 1 |
| 15 | 229270_REV2 | 34" TOW BAR W.A. | 1 |
| 16 | 229273_REV1 | REAR SCRAPER 34" | 1 |
| 17 | 229310_REV1 | QUADRANT SPACER | 2 |
| 18 | 229327_REV4 | 30" / 34" LH SIDE PLATE W.A. | 1 |
| 19 | 229328_REV2 | 30" / 34" RH SIDE PLATE W.A. | 1 |
| 20 | 229347_REV1 | 30 / 34 BELT GUIDE | 1 |
| 21 | 229348_REV2 | BELT GUIDE 30 / 34 | 1 |
| 22 | 229386_REV1 | STOP BUSH | 2 |
| 23 | 229394_REV1 | CASSETTE BOLT | 1 |
| 24 | 229492_REV1 | RETAINING PLATE ASSY | 1 |
| 25 | 230004_REV0 | SUPPORT BRACKET | 1 |
| 26 | 230153_REV1 | TIE BAR STOP | 2 |
| 27 | 230155_REV1 | 34" TIE BAR ASSY | 2 |
| 28 | 604761_REV1 | THACKERY WASHER | 2 |
| 29 | J20023_REV2 | UNIT LIMITING STUD | 2 |
| 30 | J20064_REV0 | GREASE NIPPLE 1/4" UNF | 1 |
| 31 | J20297_REV2 | SERIAL NO PLATE (DENNIS) | 1 |
| 32 | SP01008_REV0 | HEX SET SCREW M6 X 16 | 11 |
| 33 | SP01009_REV0 | HEX SET SCREW M8 X 20 | 11 |
| 34 | SP01020_REV0 | HEX SET SCREW M10 X 40 | 2 |
| 35 | SP01025_REV0 | CAP HEAD M8 X 30 | 4 |
| 36 | SP01027_REV0 | HEX SET SCREW M8 X 40 | 2 |
| 37 | SP01034_REV0 | HEX SET SCREW M10 X 20 | 2 |
| 38 | SP01035_REV0 | HEX SET SCREW M10 X 25 | 10 |
| 39 | SP01059_REV0 | HEX SET SCREW M12 X 25 | 2 |
| 40 | SP01065_REV0 | HEX SET SCREW M12 X 30 | 2 |
| 41 | SP01076_REV0 | HEX SET SCREW M8 X 16 | 6 |
| 42 | SP02004_REV0 | NUT M6 NYLOC | 6 |
| 43 | SP02006_REV0 | NUT M8 NYLOC (T) | 16 |
| 44 | SP02008_REV0 | NUT M10 NYLOC (T) | 2 |
| 45 | SP02037_REV0 | NUT 5/8" UNF STD | 1 |
| 46 | SP03003_REV0 | WASHER M6 TOOTHED | 2 |
| 47 | SP03004_REV0 | WASHER M8 TOOTHED | 1 |
| 48 | SP03004_REV0 | WASHER M8 TOOTHED | 8 |
| 49 | SP03005_REV0 | WASHER M10 TOOTHED | 11 |
| 50 | SP03006_REV0 | WASHER M12 TOOTHED | 2 |
| 51 | SP03007_REV0 | WASHER M6 X 20 | 2 |
| 52 | SP03008_REV0 | WASHER M8 FORM A | 12 |
| 53 | SP03010_REV0 | WASHER M6 FORM A | 13 |
| 54 | SP03011_REV0 | WASHER M10 FORM A | 2 |
| 55 | SP03015_REV0 | WASHER M8 FORM C | 4 |
| 56 | SP03016_REV0 | WASHER M10 FORM C | 2 |
| 57 | SP03017_REV0 | WASHER M12 FORM C | 4 |
| 58 | SP03018_REV0 | WASHER M10 FORM G | 2 |
| 59 | SP03022_REV0 | WASHER M20 FORM A | 2 |
| 60 | SP05001_REV0 | RIVET 4.8 X 10 | 2 |

DRIVE



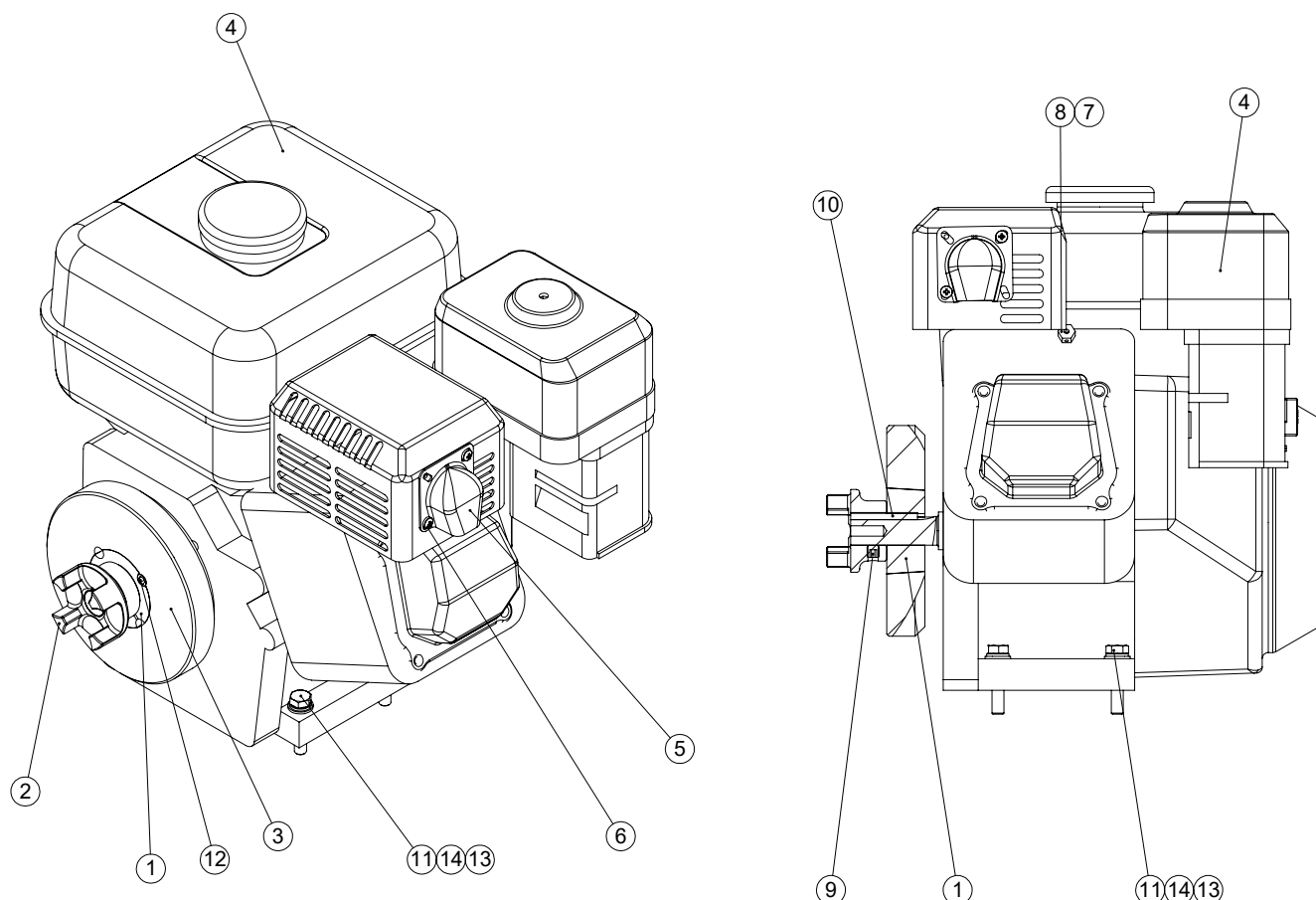
MODEL DIFFERENCES

| ITEM No | MODEL | PART NUMBER | DESCRIPTION | QTY |
|---------|-------|-------------|---------------------------|-----|
| 23 | G660 | 229244 | LAYSHAFT CUTTER DRIVE 26" | 1 |
| 23 | G760 | 229246 | LAYSHAFT CUTTER DRIVE 30" | 1 |
| 23 | G860 | 229248 | LAYSHAFT CUTTER DRIVE 34" | 1 |
| 24 | G660 | 229245 | LAYSHAFT ROLLER DRIVE 26" | 1 |
| 24 | G760 | 229247 | LAYSHAFT ROLLER DRIVE 30" | 1 |
| 24 | G860 | 229249 | LAYSHAFT ROLLER DRIVE 34" | 1 |
| 25 | G660 | 229256 | LAYSHAFT GUARD 26" | 2 |
| 25 | G760 | 229257 | LAYSHAFT GUARD 30" | 2 |
| 25 | G860 | 229258 | LAYSHAFT GUARD 34" | 2 |

DRIVE

| ITEM NO. | PART NUMBER | DESCRIPTION | drive/QTY. |
|----------|-------------------|-----------------------------------|------------|
| 1 | 062662_REV1 | BEARING 6205-2RS 3 | 2 |
| 2 | 073445_REV0 | KEY 3/16" X 3/16" X 2 1/4" RD END | 1 |
| 3 | 228001_REV1 | TAPERED BUSH 1610 - 3/4" | 1 |
| 4 | 228002_REV1 | TAPERED BUSH 1108 - 3/4" | 1 |
| 5 | 228004_REV1 | PULLEY SPZ-71 | 1 |
| 6 | 228005_REV1 | PULLEY SPZ-132 | 1 |
| 7 | 228007_REV1 | BELT V X10-665 LP | 1 |
| 8 | 228009_REV1 | BRAKE CALIPER | 1 |
| 9 | 228011_REV1 | COUPLING HALF (3/4") | 1 |
| 10 | 228012_REV1 | BELT RIBBED 4PK 698 | 1 |
| 11 | 228030_REV1 | BELT V Z-997 | 2 |
| 12 | 228103_REV1 | COUPLING ELEMENT | 1 |
| 13 | 229009_REV2 | DRIVE IDLER ARM W.A. | 1 |
| 14 | 229013_REV1 | PULLEY SPACER | 1 |
| 15 | 229014_REV1 | BELT GUIDE PEG | 1 |
| 16 | 229036_REV1 | BRAKE DISC | 1 |
| 17 | 229038_REV1 | TENSIONER PULLEY | 3 |
| 18 | 229044_REV1 | IDLER LEVER | 2 |
| 19 | 229091_REV2 | BEARING HOUSING | 4 |
| 20 | 229092_REV1 | BEARING SPACER | 3 |
| 21 | 229154_REV2 | PULLEY 2Z-60 | 1 |
| 22 | 229157_REV1 | BELT GUIDE PEG | 1 |
| 23 | 229248_REV1 | LAYSHAFT CUTTER DRIVE 34" | 1 |
| 24 | 229249_REV1 | LAYSHAFT ROLLER DRIVE 34" | 1 |
| 25 | 229258_REV1 | LAYSHAFT GUARD 34" | 2 |
| 26 | 229302_REV1 | DRIVE MALE COUPLING | 1 |
| 27 | 229303_REV1 | BEARING HOUSING | 1 |
| 28 | 229322_REV1 | 4 GROOVE DRIVE PULLEY | 1 |
| 29 | 229335_REV1 | DRIVE GASKET | 1 |
| 30 | 229358_REV2 | BOTTOM PULLEY | 1 |
| 31 | 229382_REV1 | BRG HOUSING | 2 |
| 32 | 229383_REV2 | IDLER ARM W.A. (G760 / G860) | 1 |
| 33 | D054-chassis_REV0 | G860 CHASSIS | 1 |
| 34 | J20052_REV0 | BEARING 6204-2RS 3 | 4 |
| 35 | J20457_REV1 | KEY 3/16" X 3/16" X 1" RD END | 1 |
| 36 | J20467_REV0 | GRUB SCREW M8 X 8 | 3 |
| 37 | J209030_REV1 | KEY 3/16" X 3/16" X 3/4" RD END | 2 |
| 38 | J209043_REV1 | TENSIONER BACK PLATE | 1 |
| 39 | J209249_REV0 | WASHER 9 X 35 X 3 | 2 |
| 40 | SP02034_REV0 | NUT 3/4" UNF STD | 2 |
| 41 | SP01009_REV0 | HEX SET SCREW M8 X 20 | 14 |
| 42 | SP01027_REV0 | HEX SET SCREW M8 X 40 | 4 |
| 43 | SP01068_REV0 | HEX SET SCREW 3/8" UNF X 2 1/2" | 1 |
| 44 | SP01071_REV0 | HEX SET SCREW 3/8" UNF X 1 1/2" | 2 |
| 45 | SP01076_REV0 | HEX SET SCREW M8 X 16 | 1 |
| 46 | SP01077_REV0 | CSK CAP HEAD M8 X 16 | 4 |
| 47 | SP02006_REV0 | NUT M8 NYLOC (T) | 2 |
| 48 | SP02018_REV0 | NUT 3/8" UNF NYLOC (T) | 1 |
| 49 | SP02029_REV0 | NUT M16 LOCK (THIN) | 1 |
| 50 | SP02033_REV0 | NUT 3/8" UNF LOCK (THIN) | 2 |
| 51 | SP03002_REV0 | WASHER 3/8" | 1 |
| 52 | SP03004_REV0 | WASHER M8 TOOTHED | 8 |
| 53 | SP03004_REV0 | WASHER M8 TOOTHED | 5 |
| 54 | SP03008_REV0 | WASHER M8 FORM A | 7 |
| 55 | SP03029_REV0 | WASHER M8 SPRING LOCK | 4 |

ENGINE

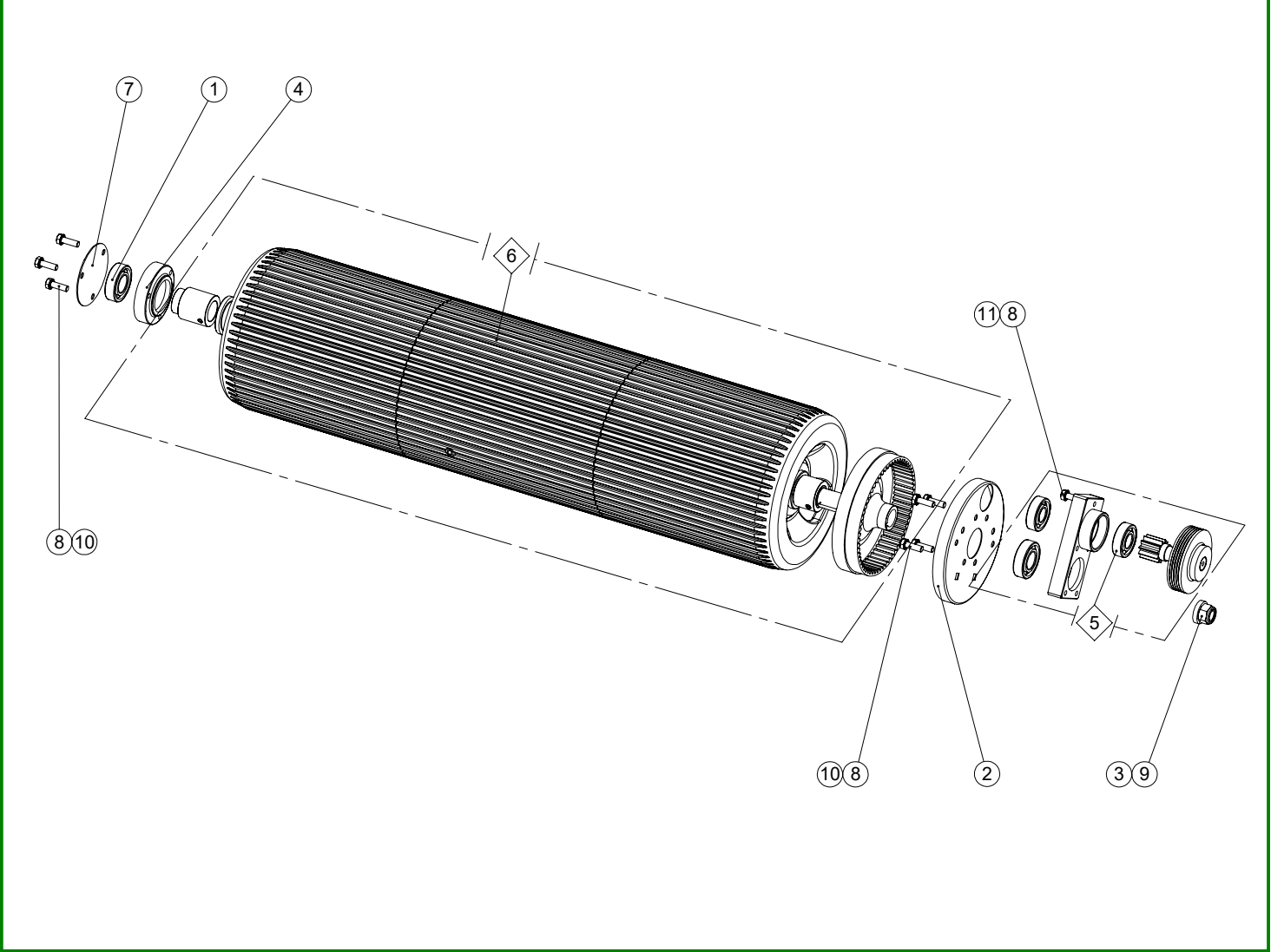


| ITEM NO. | PART NUMBER | DESCRIPTION | QTY. |
|----------|--------------|-----------------------------------|------|
| 1 | 228001_REV1 | TAPERED BUSH 1610 - 3/4" | 1 |
| 2 | 228011_REV1 | COUPLING HALF (3/4") | 1 |
| 3 | 229015_REV1 | FLYWHEEL | 1 |
| 4 | 229902_REV1 | ENGINE 6.5 HP HONDA GX200 Q9 TYPE | 1 |
| 5 | J20367_REV0 | EXHAUST DEFLECTOR | 1 |
| 6 | J20368_REV0 | SCREW M4 EXHAUST DEFLECTOR | 2 |
| 7 | J20369_REV0 | E CLIP 5MM | 1 |
| 8 | J20376_REV1 | THROTTLE CLAMP | 1 |
| 9 | J20467_REV0 | GRUB SCREW M8 X 8 | 1 |
| 10 | J209025_REV0 | KEY 3/16" X 3/16" X 1 3/4" RD END | 1 |
| 11 | SP01027_REV0 | HEX SET SCREW M8 X 40 | 4 |
| 12 | SP01079_REV1 | GRUB SCREW 3/8" X 5/8" | 2 |
| 13 | SP03008_REV0 | WASHER M8 FORM A | 4 |
| 14 | SP03029_REV0 | WASHER M8 SPRING LOCK | 4 |

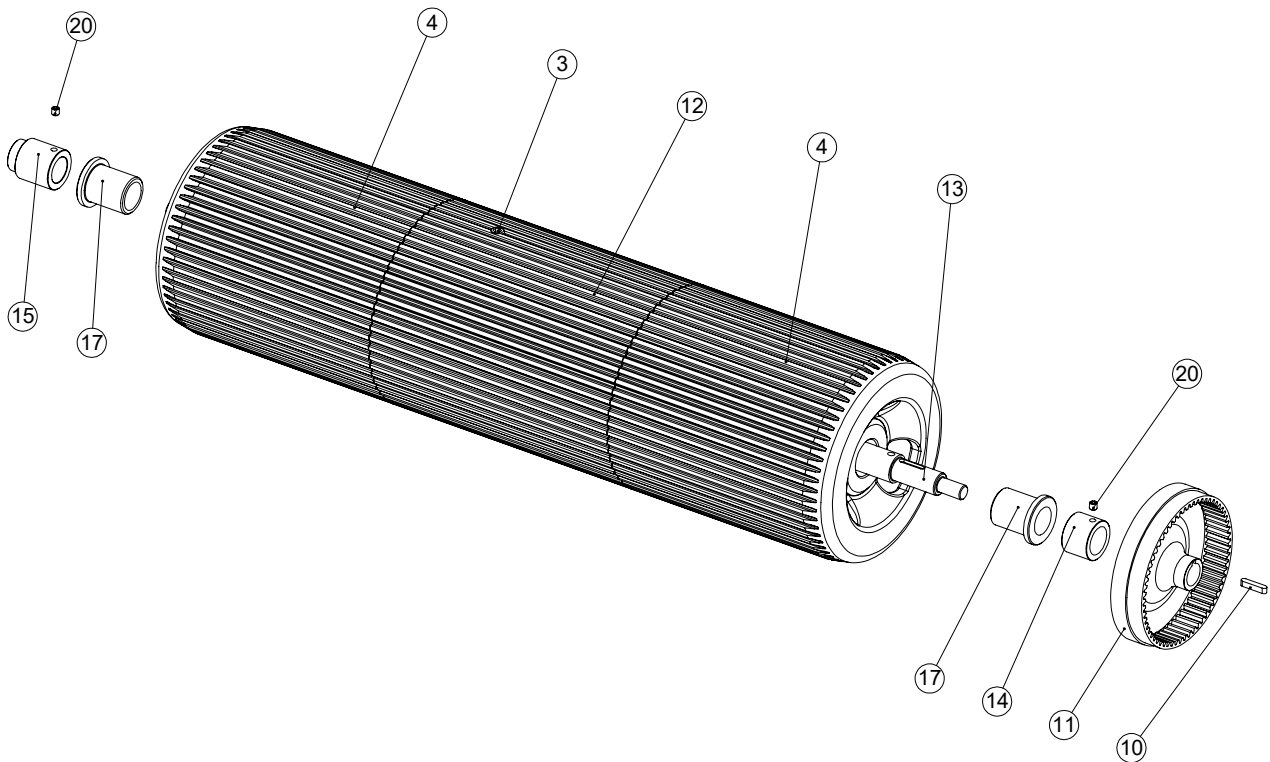
MODEL DIFFERENCES

| ITEM No | MODEL | PART NUMBER | DESCRIPTION | QTY |
|---------|-------------|-------------|-----------------------------------|-----|
| 4 | G660 & G760 | 229901 | ENGINE 5.5 HP HONDA GX160 Q9 TYPE | 1 |
| 4 | G860 | 229902 | ENGINE 6.5 HP HONDA GX200 Q9 TYPE | 1 |

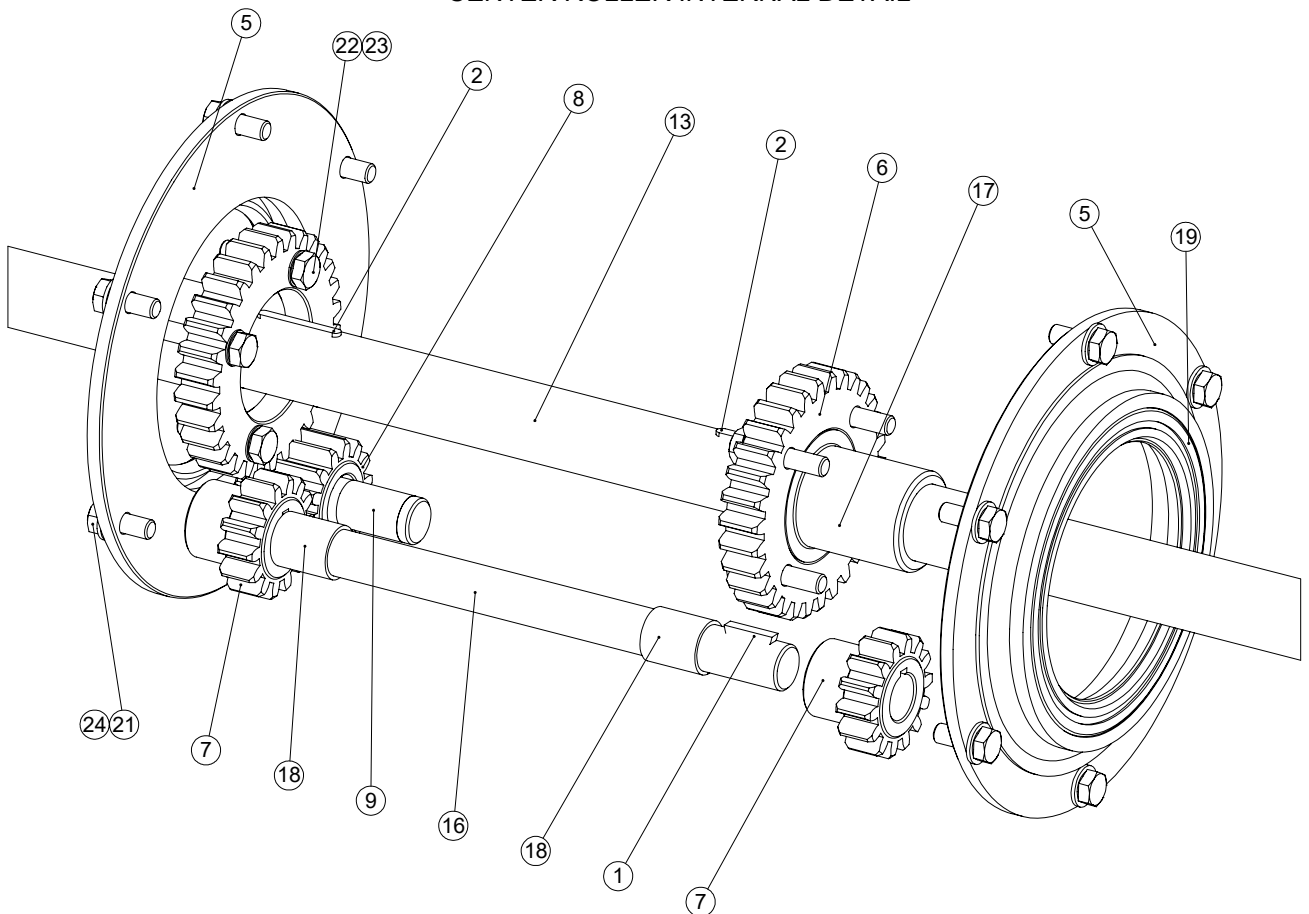
REAR ROLLER



| ITEM NO. | PART NUMBER | DESCRIPTION | CROSS SECTION RR/QTY. |
|----------|--------------|----------------------------|-----------------------|
| 1 | 062662_REV1 | BEARING 6205-2RS 3 | 1 |
| 2 | 229031_REV3 | DIRT EXCLUDER | 1 |
| 3 | 229039_REV1 | LANDROLL COLLAR | 1 |
| 4 | 229104_REV1 | LANDROLL BEARING HOUSING | 1 |
| 5 | 800066_REV0 | DRIVE BEARING HOUSING ASSY | 1 |
| 6 | 800071_REV1 | REAR ROLLER ASSEMBLY | 1 |
| 7 | J20009_REV1 | BLANKING PLATE | 1 |
| 8 | SP01045_REV0 | HEX SET SCREW M8 X 25 | 8 |
| 9 | SP02028_REV0 | NUT M16 NYLOC (T) | 1 |
| 10 | SP03004_REV0 | WASHER M8 TOOTHED | 6 |
| 11 | SP03004_REV0 | WASHER M8 TOOTHED | 2 |



CENTER ROLLER INTERNAL DETAIL



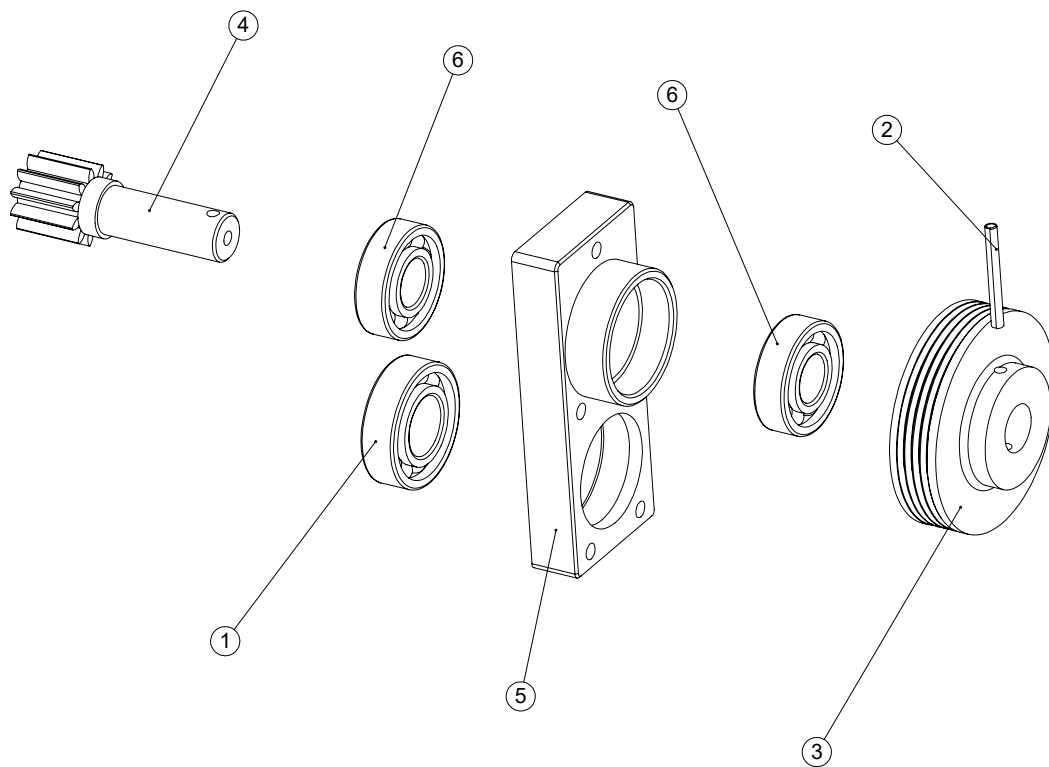
REAR ROLLER CONTINUED - 800071 BOM

| ITEM NO. | PART NUMBER | DESCRIPTION | Default/QTY. |
|----------|--------------|-----------------------------------|--------------|
| 1 | 016386_REV0 | KEY WOODRUFF 3/16" X 7/8" | 2 |
| 2 | 073445_REV0 | KEY 3/16" X 3/16" X 1 1/2" RD END | 2 |
| 3 | 171702_REV1 | GRUB SCREW 3/8" BSPT | 1 |
| 4 | 195076_REV2 | OUTER ROLLER 11" (MACHINED) | 2 |
| 5 | 195077_REV1 | OIL SEAL HOUSING | 2 |
| 6 | 195078_REV1 | DIFFERENTIAL WHEEL | 2 |
| 7 | 195079_REV1 | DIFFERENTIAL PINION | 2 |
| 8 | 195080_REV1 | DOUBLE DIFFERENTIAL PINION | 1 |
| 9 | 195094_REV1 | PIVOT PIN | 1 |
| 10 | 228049_REV1 | KEY 1/4" X 1/4" X 1 1/4" RD END | 1 |
| 11 | 229030_REV1 | INTERNAL GEAR | 1 |
| 12 | 229227_REV3 | CENTRE ROLLER 12" (MACHINED) | 1 |
| 13 | 229324_REV1 | REAR ROLLER SHAFT 34" | 1 |
| 14 | 229325_REV1 | 30"/34" SHAFT COLLAR | 1 |
| 15 | 229326_REV1 | SHAFT SPACER | 1 |
| 16 | 229451_REV1 | DIFF SHAFT G860 | 1 |
| 17 | 229484_REV1 | BUSH FOR END ROLLER | 4 |
| 18 | 601620_REV1 | BUSH 12DU16 | 3 |
| 19 | 605857_REV1 | SEAL REAR ROLLER | 2 |
| 20 | J20467_REV0 | GRUB SCREW M8 X 8 | 2 |
| 21 | SP01009_REV0 | HEX SET SCREW M8 X 20 | 12 |
| 22 | SP01036_REV0 | HEX SET SCREW M8 X 35 | 8 |
| 23 | SP03004_REV0 | WASHER M8 TOOTHED | 8 |
| 24 | SP03008_REV0 | WASHER M8 FORM A | 12 |

MODEL DIFFERENCES

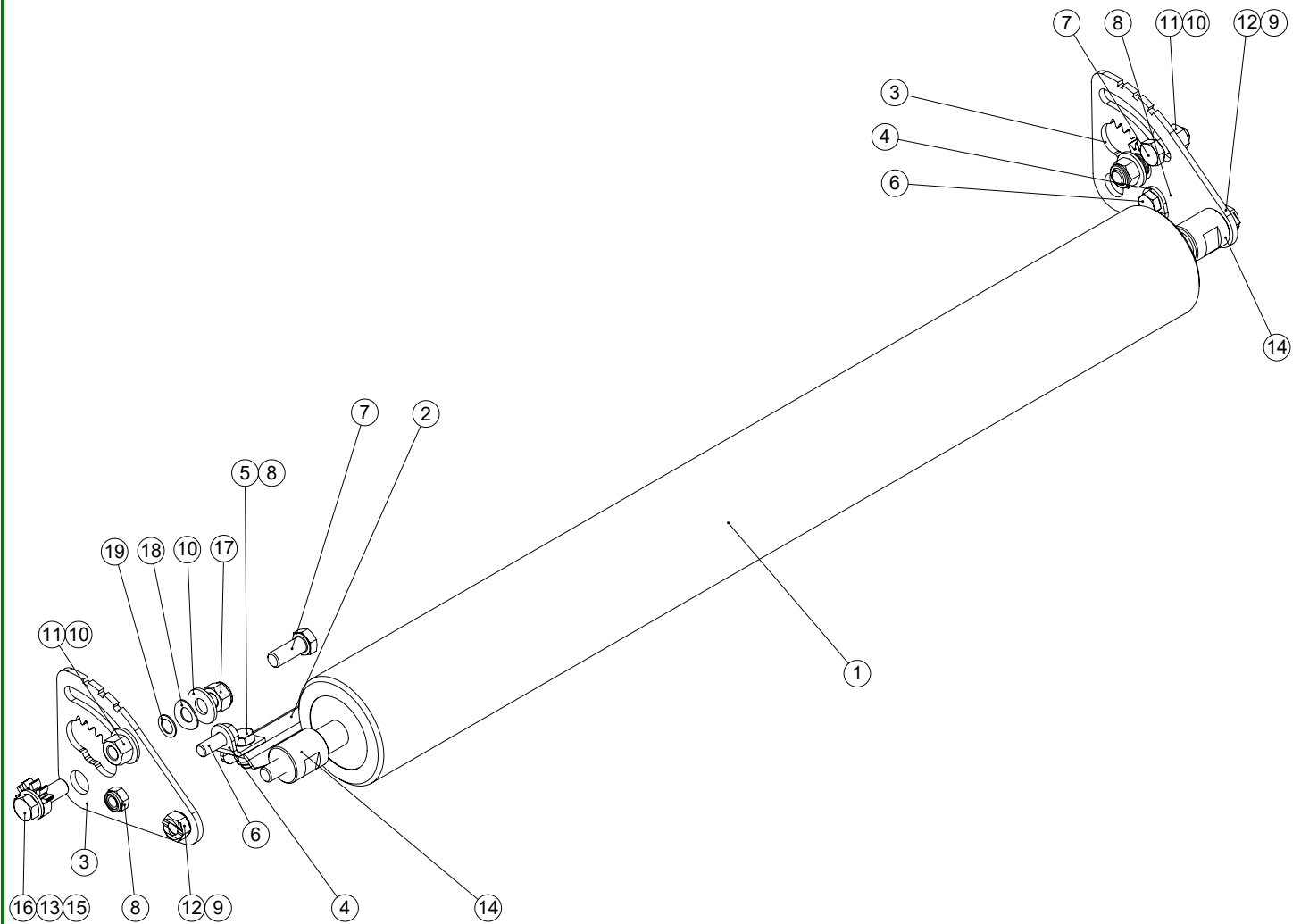
| ITEM No | MODEL | PART NUMBER | DESCRIPTION | QTY |
|---------|------------|-------------|------------------------|-----|
| 4 | G660 | 195075 | OUTER ROLLER 26" | 2 |
| 4 | G760, G860 | 195076 | OUTER ROLLER 30" & 34" | 2 |
| 12 | G660 | 229537 | CENTRE ROLLER 26" | 1 |
| 12 | G760 | 195074 | CENTRE ROLLER 30" | 1 |
| 12 | G860 | 229227 | CENTRE ROLLER 34" | 1 |
| 13 | G660 | 229500 | REAR ROLLER SHAFT 26" | 1 |
| 13 | G760 | 229323 | REAR ROLLER SHAFT 30" | 1 |
| 13 | G860 | 229324 | REAR ROLLER SHAFT 34" | 1 |
| 14 | G660 | 229510 | SHAFT COLLAR 26" | 1 |
| 14 | G760, G860 | 229325 | SHAFT COLLAR 30" & 34" | 1 |
| 15 | G660 | 229509 | SHAFT SPACER 26" | 1 |
| 15 | G760, G860 | 229326 | SHAFT SPACER 30" & 34" | 1 |
| 16 | G660 | 229511 | DIFF SHAFT 26" | 1 |
| 16 | G760 | 195082 | DIFF SHAFT 30" | 1 |
| 16 | G860 | 229451 | DIFF SHAFT 34" | 1 |

REAR ROLLER CONTINUED - 800066 & BOM



| ITEM NO. | PART NUMBER | DESCRIPTION | QTY. |
|----------|-------------|------------------------|------|
| 1 | 062662_REV1 | BEARING 6205-2RS 3 | 1 |
| 2 | 228053_REV1 | PIN SPIROL M5 X 45 | 1 |
| 3 | 229003_REV1 | DRIVE PULLEY LAND ROLL | 1 |
| 4 | 229011_REV1 | PINION SHAFT 11T | 1 |
| 5 | 229034_REV2 | ROLLER BEARING HOUSING | 1 |
| 6 | J20052_REV0 | BEARING 6204-2RS 3 | 2 |

FRONT ROLLER

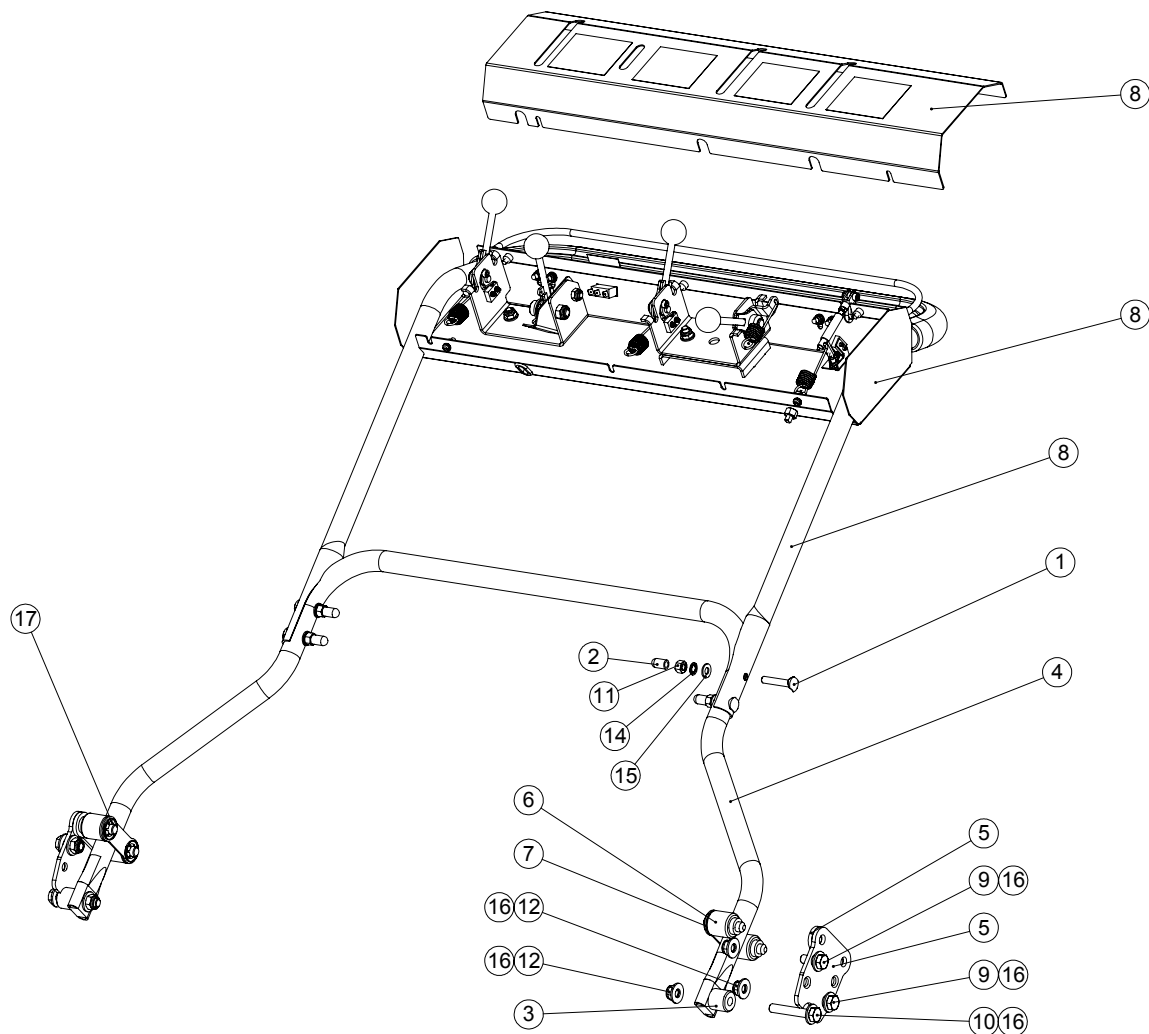


| ITEM NO. | PART NUMBER | DESCRIPTION | QTY. |
|----------|--------------|--------------------------|------|
| 1 | 229233_REV1 | FRONT ROLLER 34" | 1 |
| 2 | 229264_REV2 | FRONT ROLLER SCRAPER 34" | 1 |
| 3 | 229329_REV2 | ROLLER QUADRANT | 2 |
| 4 | 229491_REV1 | SCRAPER BRK | 2 |
| 5 | SP01034_REV0 | HEX SET SCREW M10 X 20 | 2 |
| 6 | SP01035_REV0 | HEX SET SCREW M10 X 25 | 2 |
| 7 | SP01065_REV0 | HEX SET SCREW M12 X 30 | 2 |
| 8 | SP02008_REV0 | NUT M10 NYLOC (T) | 4 |
| 9 | SP03006_REV0 | WASHER M12 TOOTHED | 2 |
| 10 | SP03017_REV0 | WASHER M12 FORM C | 4 |
| 11 | SP02009_REV0 | NUT M12 STD | 2 |
| 12 | SP02054_REV0 | NUT M12 BINK | 2 |
| 13 | SP03012_REV0 | WASHER M12 FORM A | 2 |
| 14 | 230735_REV0 | ROLLER CUP G-SERIES | 2 |
| 15 | 230741_REV0 | QUADRANT GEAR | 2 |
| 16 | SP01111_REV0 | HEX SET SCREW M12 X 35 | 2 |
| 17 | SP02010_REV0 | NUT M12 NYLOC (T) | 2 |
| 18 | SP03019_REV0 | WASHER M12 WAVE | 2 |
| 19 | SP03020_REV0 | SHIM 12 X 18 X 1 | 2 |

MODEL DIFFERENCES

| ITEM No. | MODEL | PART NUMBER | DESCRIPTION | QTY |
|----------|-------|-------------|--------------------------|-----|
| 1 | G660 | 229231_REV1 | FRONT ROLLER 26" | 1 |
| 1 | G760 | 229232_REV1 | FRONT ROLLER 30" | 1 |
| 1 | G860 | 229233_REV1 | FRONT ROLLER 34" | 1 |
| 2 | G660 | 229262_REV1 | FRONT ROLLER SCRAPER 26" | 1 |
| 2 | G760 | 229263_REV1 | FRONT ROLLER SCRAPER 30" | 1 |
| 2 | G860 | 229264_REV2 | FRONT ROLLER SCRAPER 34" | 1 |

HANDLE BARS

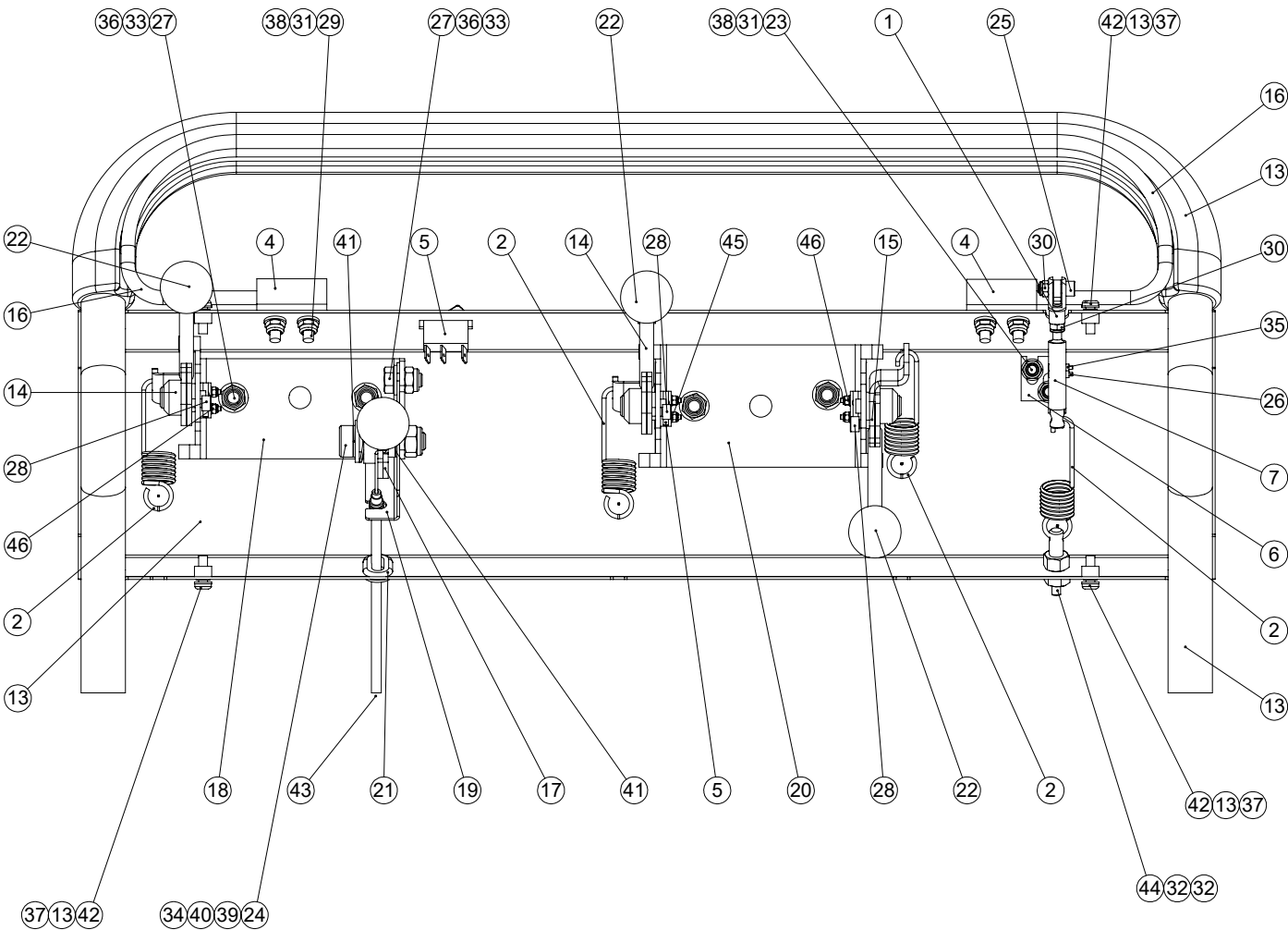
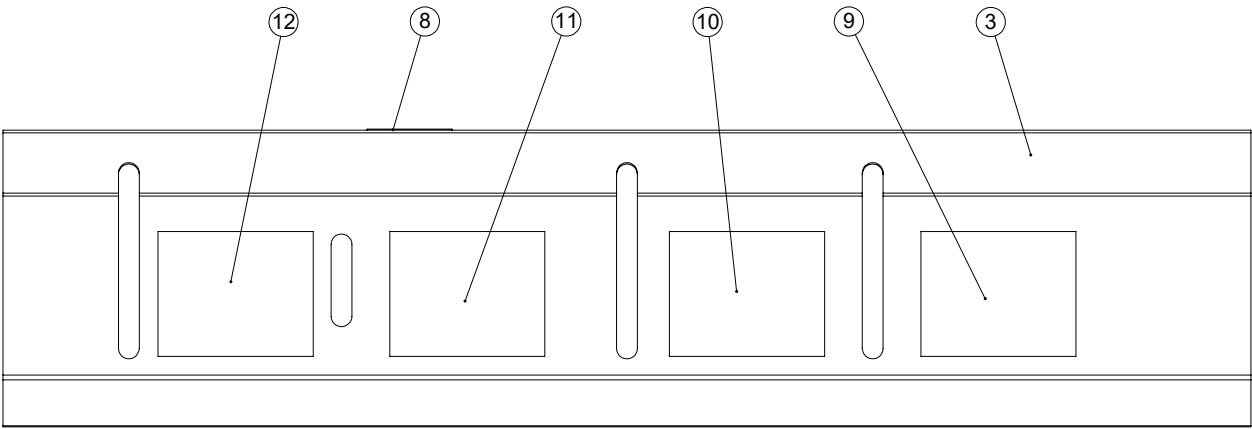


| ITEM NO. | PART NUMBER | DESCRIPTION | QTY. |
|----------|--------------|--------------------------------|------|
| 1 | 228093_REV0 | BOLT SADDLE M8 X 43 | 4 |
| 2 | 228094_REV0 | END TIP 5/16" | 4 |
| 3 | 229166_REV1 | HANDLE PIVOT BUSH | 2 |
| 4 | 229577_REV1 | 34" LOWER HANDLE TUBE G860 MK2 | 1 |
| 5 | 230200_REV0 | HANDLE BRACKET W.A. | 2 |
| 6 | 230203_REV0 | HANDLE BUFFER | 4 |
| 7 | 230205_REV0 | HANDLE BRACKET SUPPORT | 2 |
| 8 | 800086_REV2 | G SERIES UPPER HANDLEBAR ASSY | 1 |
| 9 | SP01035_REV0 | HEX SET SCREW M10 X 25 | 4 |
| 10 | SP01047_REV0 | HEX SET SCREW M10 X 60 | 2 |
| 11 | SP02005_REV0 | NUT M8 STD | 4 |
| 12 | SP02008_REV0 | NUT M10 NYLOC (T) | 6 |
| 13 | SP03004_REV0 | WASHER M8 TOOTHED | 1 |
| 14 | SP03004_REV0 | WASHER M8 TOOTHED | 3 |
| 15 | SP03008_REV0 | WASHER M8 FORM A | 4 |
| 16 | SP03016_REV0 | WASHER M10 FORM C | 12 |
| 17 | SP07001_REV0 | STARLOCK 12MM | 4 |

MODEL DIFFERENCES

| ITEM No | MODEL | PART NUMBER | DESCRIPTION | QTY |
|---------|-------|-------------|-----------------------|-----|
| 4 | G660 | 229587 | LOWER HANDLE TUBE 26" | 1 |
| 4 | G760 | 229576 | LOWER HANDLE TUBE 30" | 1 |
| 4 | G860 | 229577 | LOWER HANDLE TUBE 34" | 1 |

HANDLE BARS

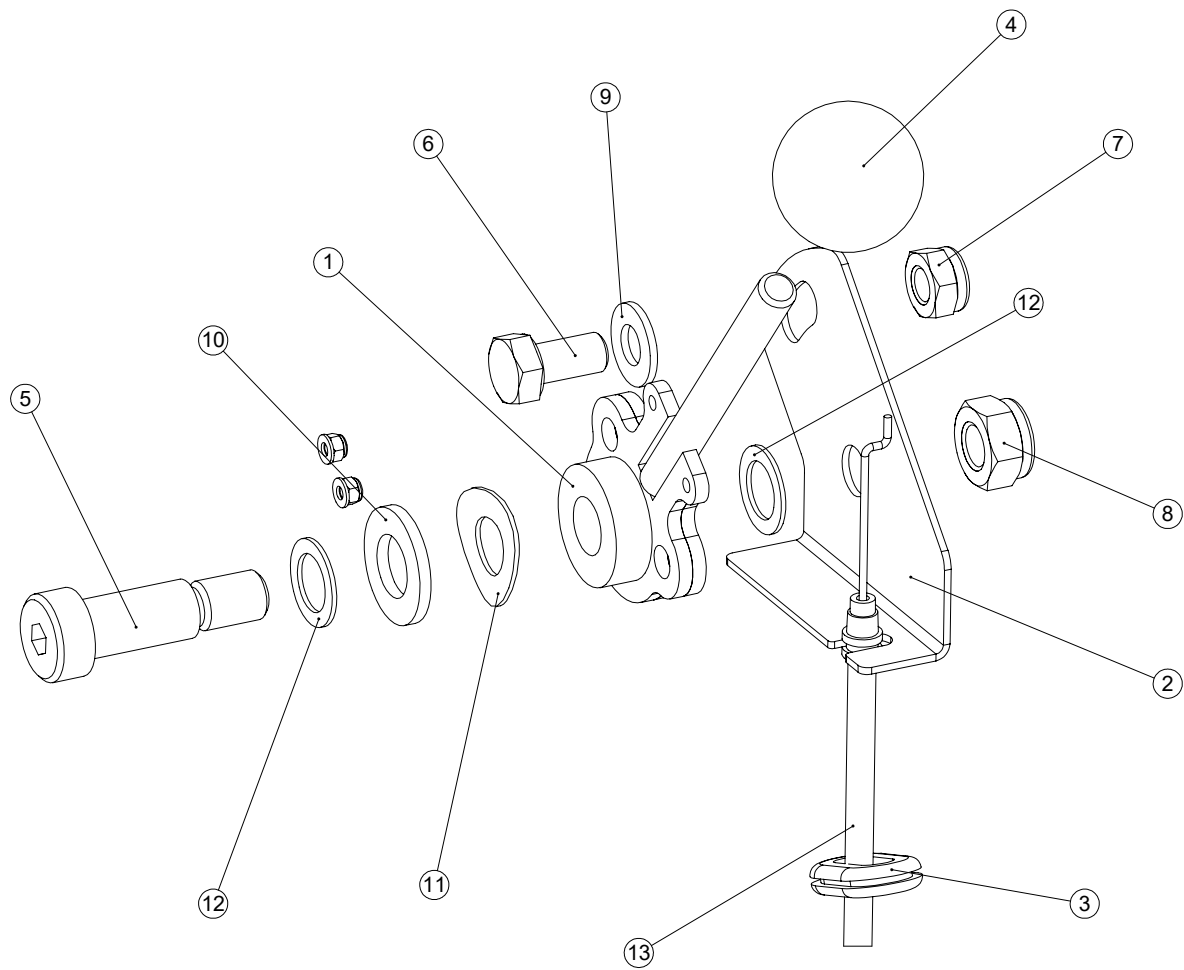


HANDLE BARS

| ITEM NO. | PART NUMBER | DESCRIPTION | CONTROLS/QTY. |
|----------|--------------|-------------------------------|---------------|
| 1 | 228020_REV1 | CLEVIS GM5 (5MM) | 1 |
| 2 | 229167_REV1 | CLUTCH SPRING | 4 |
| 3 | 229582_REV2 | CONSOLE COVER G760 / G860 | 1 |
| 4 | 229585_REV1 | PIVOT BLOCK | 2 |
| 5 | 229586_REV1 | HARNESS 860 | 1 |
| 6 | 229590_REV1 | SAFETY SWITCH BRACKET | 1 |
| 7 | 229595_REV2 | SAFETY LEVER PLUNGER W.A. | 1 |
| 8 | 229599_REV1 | DECAL ENGINE ON / OFF | 1 |
| 9 | 229600_REV1 | DECAL CUTTING CYLINDER | 1 |
| 10 | 229601_REV1 | DECAL ROLLER DRIVE | 1 |
| 11 | 229602_REV1 | DECAL THROTTLE CONTROL | 1 |
| 12 | 229603_REV1 | DECAL PARKING BRAKE | 1 |
| 13 | 230160_REV0 | G-SERIES HANDLE MOULDING ASSY | 1 |
| 14 | 230170_REV2 | LEVER R.H. W.A. | 2 |
| 15 | 230171_REV2 | LEVER L.H. W.A. | 1 |
| 16 | 230180_REV0 | SAFETY BAR W.A. | 1 |
| 17 | 230190_REV1 | THROTTLE LEVER W.A. | 1 |
| 18 | 230195_REV1 | THROTTLE / BRAKE BRACKET ASSY | 1 |
| 19 | 230196_REV1 | THROTTLE PLATE | 1 |
| 20 | 230207_REV1 | LEVER BRACKET ASSY | 1 |
| 21 | 260138_REV1 | GROMMET PV270A | 1 |
| 22 | J20017_REV1 | KNOB - RED | 4 |
| 23 | SP01019_REV0 | BUTTON HEAD M6 X 16 | 2 |
| 24 | SP01029_REV0 | SHOULDER BOLT 12 X 25 M10 | 1 |
| 25 | SP01043_REV0 | CAP HEAD M5 X 16 | 1 |
| 26 | SP01070_REV0 | CAP HEAD M2 X 12 | 2 |
| 27 | SP01076_REV0 | HEX SET SCREW M8 X 16 | 3 |
| 28 | SP01081_REV0 | CAP HEAD M5 X 12 | 3 |
| 29 | SP01101_REV0 | SCREW M6 X 25 SLOTTED | 4 |
| 30 | SP02002_REV0 | NUT M5 NYLOC (T) | 2 |
| 31 | SP02004_REV0 | NUT M6 NYLOC | 6 |
| 32 | SP02005_REV0 | NUT M8 STD | 2 |
| 33 | SP02006_REV0 | NUT M8 NYLOC (T) | 5 |
| 34 | SP02008_REV0 | NUT M10 NYLOC (T) | 1 |
| 35 | SP02038_REV0 | NUT M2 (BUSH) | 2 |
| 36 | SP03008_REV0 | WASHER M8 FORM A | 5 |
| 37 | SP03009_REV0 | WASHER M5 FORM A | 5 |
| 38 | SP03010_REV0 | WASHER M6 FORM A | 6 |
| 39 | SP03012_REV0 | WASHER M12 FORM A | 1 |
| 40 | SP03019_REV0 | WASHER M12 WAVE | 1 |
| 41 | SP03020_REV0 | SHIM 12 X 18 X 1 | 2 |
| 42 | SP04001_REV0 | SCREW M5 X 16 SLOTTED | 5 |
| 43 | SP12002_REV1 | THROTTLE CABLE G860 / G760 | 1 |
| 44 | 229620_REV2 | BOLT FOR SPRING | 1 |
| 45 | SP03039_REV0 | WASHER M2.5 FORM A | 6 |
| 46 | SP02059_REV0 | NUT M2.5 NYLOC (P) | 6 |

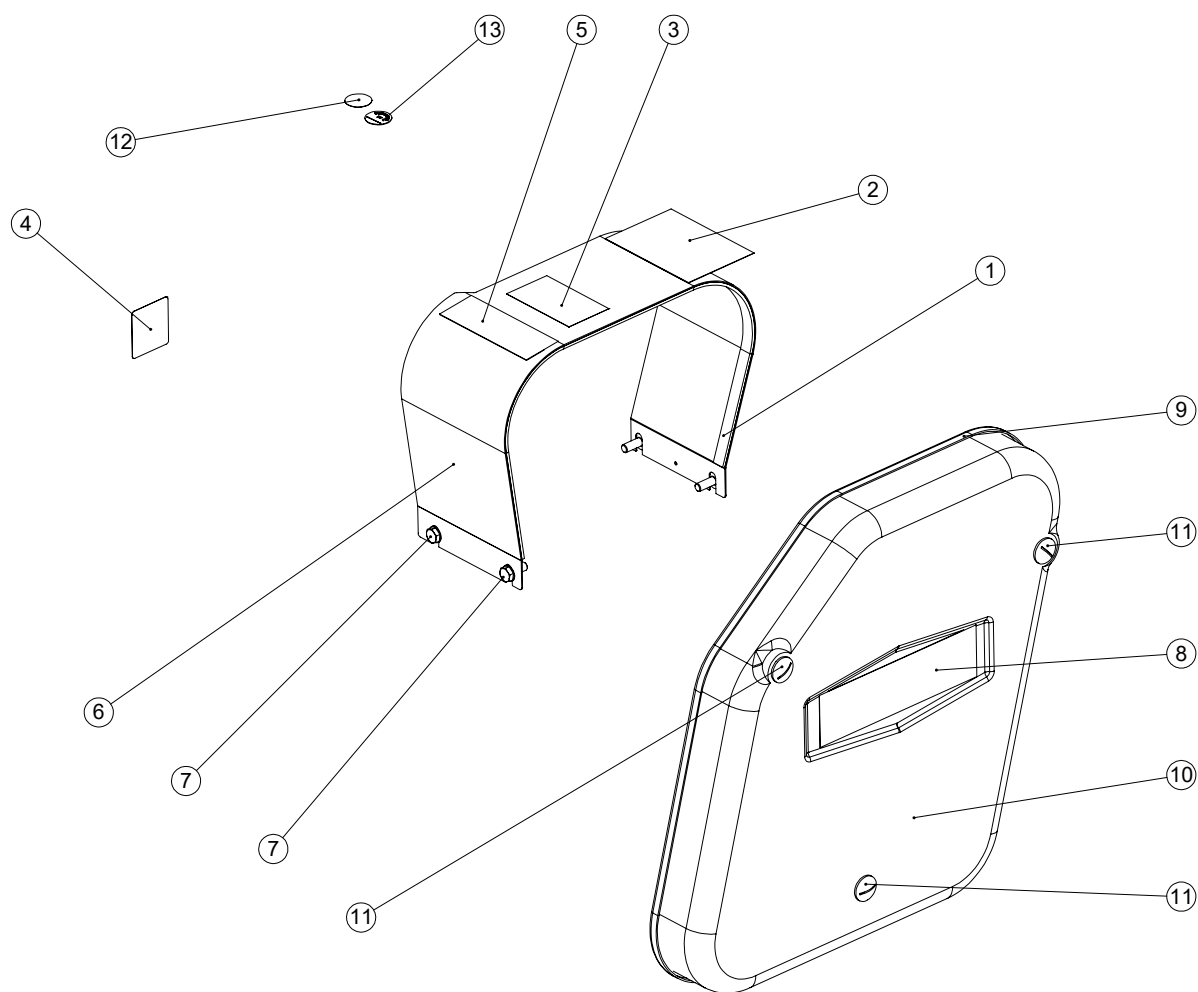
| PARTS NOT SHOWN (CABLES AND WIRES) | | |
|------------------------------------|----------------------------|------|
| PART NUMBER | DESCRIPTION | QTY. |
| 228027 | DASHBOARD TO ENGINE LOOM | 1 |
| 229378 | CUTTER DRIVE CLUTCH CABLE | 1 |
| 229596 | ROLLER DRIVE CLUTCH CABLE | 1 |
| 229597 | BRAKE CABLE | 1 |
| SP12002 | THROTTLE CABLE G860 / G760 | 1 |

HANDLE THROTTLE KIT



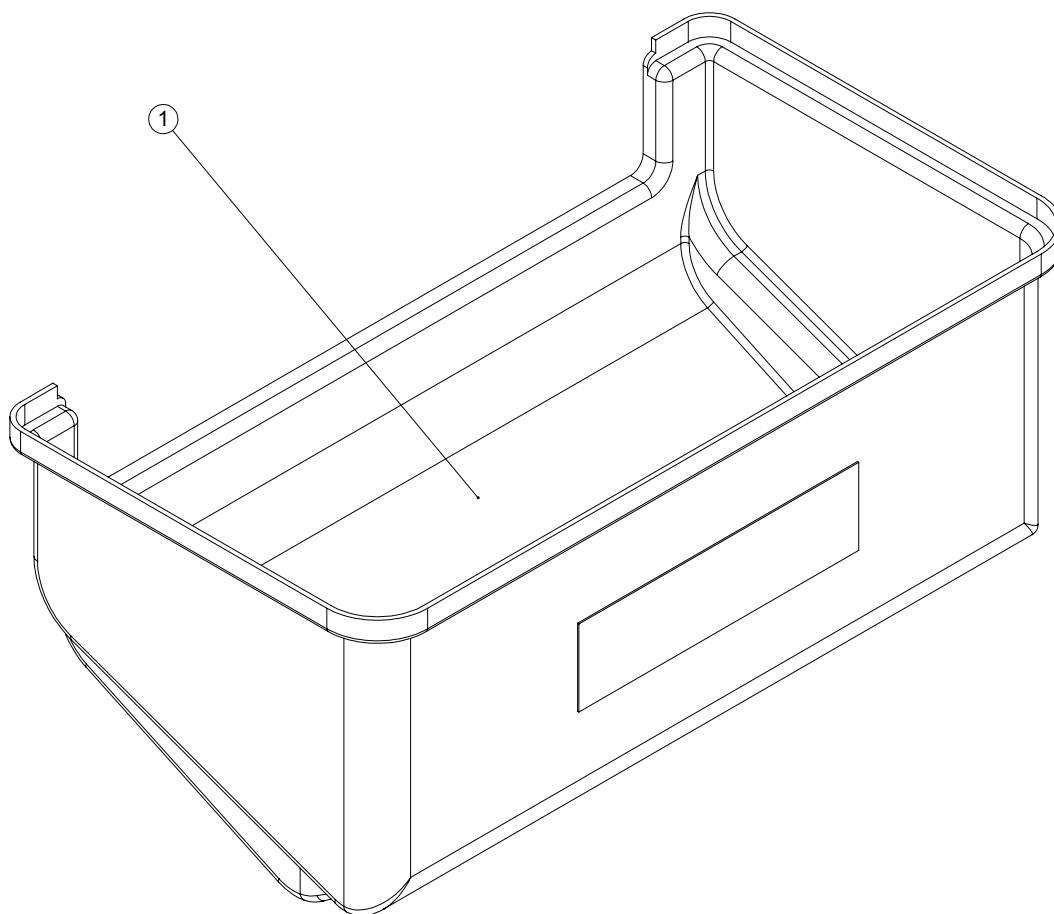
| ITEM NO. | PART NUMBER | DESCRIPTION | HANDLE THROTTLE KI/QTY. |
|----------|--------------|----------------------------|-------------------------|
| 1 | 230190_REV1 | THROTTLE LEVER W.A. | 1 |
| 2 | 230196_REV1 | THROTTLE PLATE | 1 |
| 3 | 260138_REV1 | GROMMET PV270A | 1 |
| 4 | J20017_REV1 | KNOB - RED | 1 |
| 5 | SP01029_REV0 | SHOULDER BOLT 12 X 25 M10 | 1 |
| 6 | SP01076_REV0 | HEX SET SCREW M8 X 16 | 1 |
| 7 | SP02006_REV0 | NUT M8 NYLOC (T) | 1 |
| 8 | SP02008_REV0 | NUT M10 NYLOC (T) | 1 |
| 9 | SP03008_REV0 | WASHER M8 FORM A | 1 |
| 10 | SP03012_REV0 | WASHER M12 FORM A | 1 |
| 11 | SP03019_REV0 | WASHER M12 WAVE | 1 |
| 12 | SP03020_REV0 | SHIM 12 X 18 X 1 | 2 |
| 13 | SP12002_REV1 | THROTTLE CABLE G860 / G760 | 1 |
| 14 | 229620_REV2 | BOLT FOR SPRING | 1 |
| 15 | SP03039_REV0 | WASHER M2.5 FORM A | 6 |
| 16 | SP02059_REV0 | NUT M2.5 NYLOC (P) | 6 |

GUARDS AND DECALS



| ITEM NO. | PART NUMBER | DESCRIPTION | GUARDS AND DECALS/QTY. |
|----------|--------------|--------------------------------|------------------------|
| 1 | 228072_REV0 | NEOPRENE SPONGE (M/CM) | 1 |
| 2 | 229375_REV1 | DECAL WARNING | 1 |
| 3 | B32903_REV0 | DECAL UNION JACK | 1 |
| 4 | 229605_REV0 | 98 Db DECAL | 1 |
| 5 | J20362_REV1 | DECAL DENNIS SMALL | 1 |
| 6 | 229093_REV1 | TRANSMISSION GUARD W.A. | 1 |
| 7 | SP01066_REV0 | HEX TAPTITE SCREW M8 X 20 | 4 |
| 8 | B32902_REV1 | DECAL DENNIS | 1 |
| 9 | 228031F_REV0 | CHAIN CASE SEAL | 1 |
| 10 | 229333_REV2 | CHAIN CASE G660/G680/G760/G860 | 1 |
| 11 | 194946_REV1 | CHAIN CASE SCREW | 3 |
| 12 | 229579_REV0 | READY FOR DISPATCH DECAL | 1 |
| 13 | 229580_REV0 | DECAL INSPECTION | 1 |

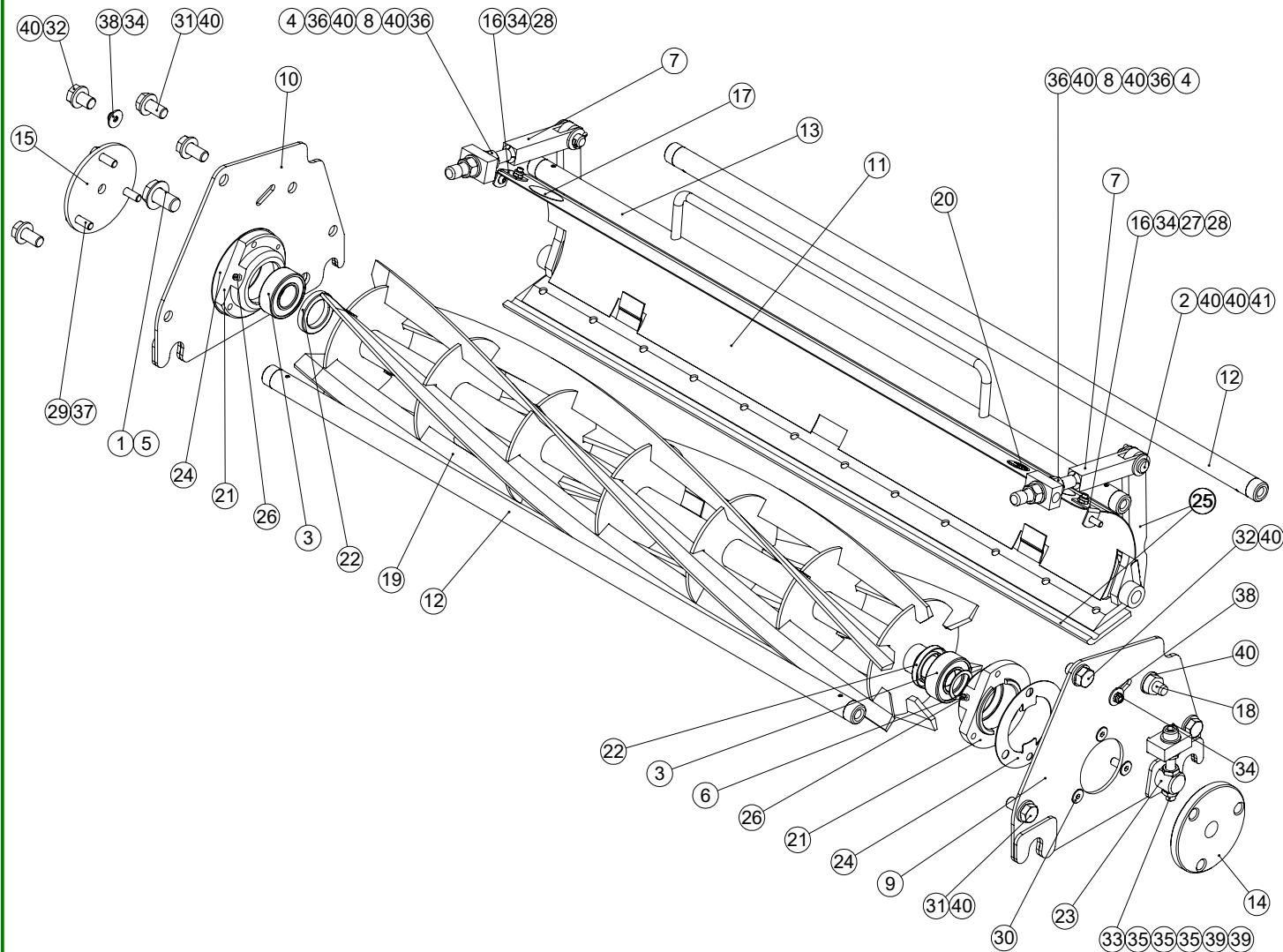
For handle bar decals see P6.02



| ITEM NO. | PART NUMBER | DESCRIPTION | QTY. |
|----------|-------------|---------------|------|
| 1 | 229243_REV1 | GRASS BOX 860 | 1 |

| MODEL DIFFERENCES | | | | |
|-------------------|-------|-------------|--------------|-----|
| ITEM No | MODEL | PART NUMBER | DESCRIPTION | QTY |
| 1 | G660 | 229241 | GRASSBOX 26" | 1 |
| 1 | G760 | 229242 | GRASSBOX 30" | 1 |
| 1 | G860 | 229243 | GRASSBOX 34" | 1 |

CASSETTE CUTTER



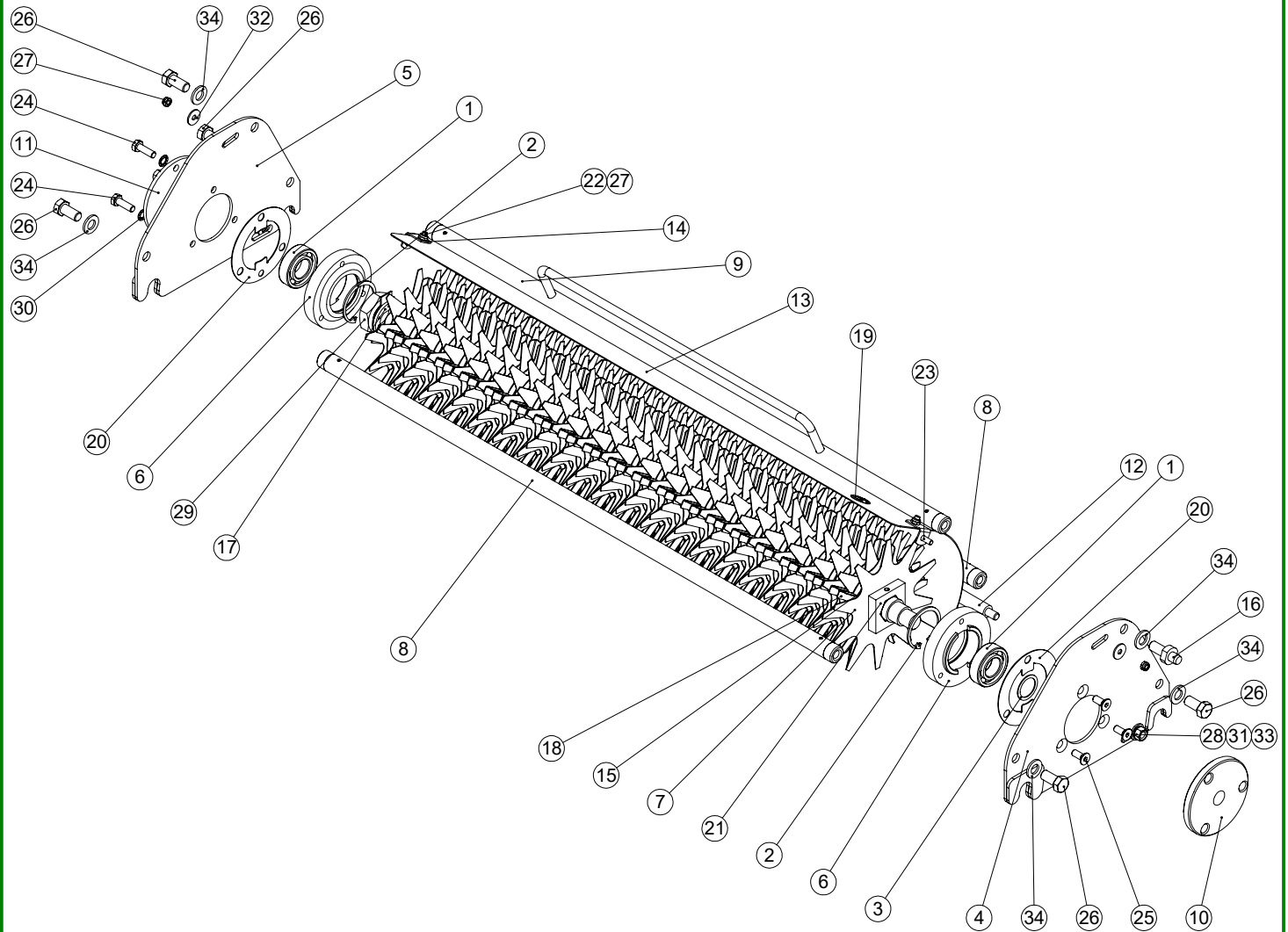
MODEL DIFFERENCES

| ITEM No. | MODEL | PART NUMBER | DESCRIPTION | QTY |
|-----------|------------------|-------------|-------------------------|-------------|
| 11 | G660 | 229662 | DEFLECTOR PLATE 26" | 1 |
| 11 | G760 | 229260 | DEFLECTOR PLATE 30" | 1 |
| 11 | G860 | 229261 | DEFLECTOR PLATE 34" | 1 |
| 12 | G660 | 229657 | 26" TIE BAR | 2 |
| 12 | G760 | 229295 | 30" TIE BAR | 2 |
| 12 | G860 | 229296 | 34" TIE BAR | 2 |
| 13 | G660 | 229658 | 26" HANDLE TIE BAR | 1 |
| 13 | G760 | 229297 | 30" HANDLE TIE BAR | 1 |
| 13 | G860 | 229298 | 34" HANDLE TIE BAR | 1 |
| 19 | G660 | 229650 | CYLINDER 6 BLADE 26" | 1 |
| 19 | G660 | 229619 | CYLINDER 8 BLADE 26" | 1 |
| 19 | G760 | 229572 | CYLINDER 6 BLADE 30" | 1 |
| 19 | G760 | 229615 | CYLINDER 8 BLADE 30" | 1 |
| 19 | G860 | 230614 | CYLINDER 4 BLADE 34" | 1 |
| 19 | G860 | 229573 | CYLINDER 6 BLADE 34" | 1 |
| 19 | G860 | 229568 | CYLINDER 8 BLADE 34" | 1 |
| 19 | G860 | 230610 | CYLINDER 11 BLADE 34" | 1 |
| 25 | G660 | 229652 | SHEAR BLADE 26" | 1 |
| 25 | G760 | 067171 | SHEAR BLADE 30" | 1 |
| 25 | G860 | 229229 | SHEAR BLADE 34" | 1 |
| 25 | G660 | 229656 | 26" SHEAR BLADE CARRIER | 1 |
| 25 | G760 | 229312 | 30" SHEAR BLADE CARRIER | 1 |
| 25 | G860 | 229313 | 34" SHEAR BLADE CARRIER | 1 |
| NOT SHOWN | G660, G760, G860 | 185378 | BOTTOM BLADE SCREW | AS REQUIRED |

CASSETTE CUTTER

| ITEM NO. | PART NUMBER | DESCRIPTION | QTY. |
|----------|--------------|-------------------------------|------|
| 1 | 185379_REV1 | 5/8" UNF HEX SCREW | 1 |
| 2 | 228022_REV3 | CLEVIS PIN | 2 |
| 3 | 228029_REV1 | BEARING 2205 2RS | 2 |
| 4 | 228070_REV1 | BLACK CAP | 2 |
| 5 | 228074_REV1 | D315163175 BELLEVILLE WASHER | 1 |
| 6 | 228092_REV1 | SHIM ID 25.8 X 1 THK | 1 |
| 7 | 229049_REV2 | ADJUSTER ROD | 2 |
| 8 | 229051_REV1 | ADJUSTER STOP | 2 |
| 9 | 229215_REV1 | CASSETTE SIDE PLATE W.A. L.H. | 1 |
| 10 | 229216_REV2 | CASSETTE SIDE PLATE W.A. R.H. | 1 |
| 11 | 229261_REV1 | DEFLECTOR PLATE 34" | 1 |
| 12 | 229296_REV1 | 34" TIE BAR | 2 |
| 13 | 229298_REV1 | 34" HANDLE TIE BAR | 1 |
| 14 | 229299_REV1 | DRIVEN / FEMALE COUPLING | 1 |
| 15 | 229318_REV2 | BEARING COVER | 1 |
| 16 | 229355_REV1 | DEFLECTOR PLATE BRACKET | 2 |
| 17 | 229376_REV0 | CUT DECAL | 2 |
| 18 | 229385_REV2 | STOP BOLT | 1 |
| 19 | 229573_REV4 | CYLINDER 6 BLADE 34" | 1 |
| 20 | 229580_REV0 | DECAL INSPECTION | 1 |
| 21 | 229622_REV2 | CUTTER BEARING HOUSING | 2 |
| 22 | 229701_REV1 | OIL SEAL 32 X 47 X 7 | 2 |
| 23 | 230002_REV2 | PIVOT BOLT - CASSETTE | 1 |
| 24 | 230326_REV0 | BEARING SPACER CASSETTE OUTER | 2 |
| 25 | 800126_REV0 | G860 SHEAR BLADE & CARRIER | 1 |
| 26 | J20064_REV0 | GREASE NIPPLE 1/4" UNF | 2 |
| 27 | SP01016_REV0 | BUTTON HEAD M6 X 12 | 2 |
| 28 | SP01019_REV0 | BUTTON HEAD M6 X 16 | 2 |
| 29 | SP01045_REV0 | HEX SET SCREW M8 X 25 | 3 |
| 30 | SP01058_REV0 | CSK CAP HEAD M8 X 20 | 3 |
| 31 | SP01059_REV0 | HEX SET SCREW M12 X 25 | 5 |
| 32 | SP01060_REV0 | HEX SET SCREW 1/2" UNF X 3/4" | 2 |
| 33 | SP01061_REV0 | CAP HEAD M10 X 80 FULL THREAD | 1 |
| 34 | SP02004_REV0 | NUT M6 NYLOC | 4 |
| 35 | SP02013_REV0 | NUT M10 LOCK (THIN) | 3 |
| 36 | SP02016_REV0 | NUT 1/2" UNF | 4 |
| 37 | SP03004_REV0 | WASHER M8 TOOTHED | 3 |
| 38 | SP03007_REV0 | WASHER M6 X 20 | 2 |
| 39 | SP03011_REV0 | WASHER M10 FORM A | 2 |
| 40 | SP03012_REV0 | WASHER M12 FORM A | 16 |
| 41 | SP05010_REV0 | SPLIT PIN 1/8" X 1" | 2 |

CASSETTE VERTICUTTER



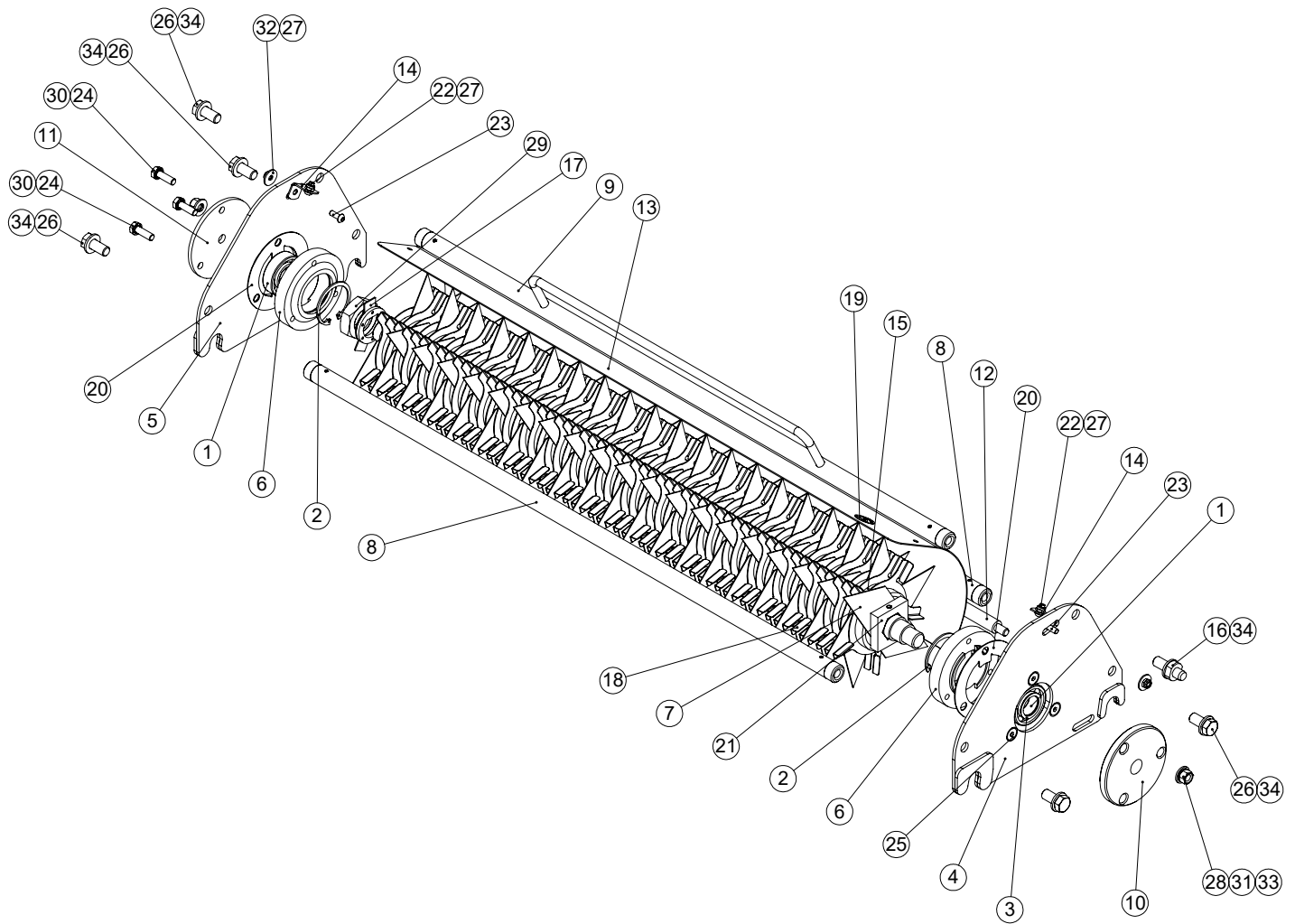
MODEL DIFFERENCES

| ITEM No. | MODEL | PART NUMBER | DESCRIPTION | QTY |
|----------|-------|-------------|-------------------------------|-----|
| 8 | G660 | 229657 | 26" TIE BAR | 2 |
| 8 | G760 | 229295 | 30" TIE BAR | 2 |
| 8 | G860 | 229296 | 34" TIE BAR | 2 |
| 9 | G660 | 229658 | 26" HANDLE TIE BAR | 1 |
| 9 | G760 | 229297 | 30" HANDLE TIE BAR | 1 |
| 9 | G860 | 229298 | 34" HANDLE TIE BAR | 1 |
| 12 | G660 | 229660 | 26" NON CUTTER CASSETTE BAR | 1 |
| 12 | G760 | 229349 | 30" NON CUTTER CASSETTE BAR | 1 |
| 12 | G860 | 229350 | 34" NON CUTTER CASSETTE BAR | 1 |
| 13 | G660 | 229663 | 26" NON CUTTER DEFLECTOR W.A. | 1 |
| 13 | G760 | 229353 | 30" NON CUTTER DEFLECTOR W.A. | 1 |
| 13 | G860 | 229354 | 34" NON CUTTER DEFLECTOR W.A. | 1 |
| 21 | G660 | 800168 | 26" HEX SHAFT ASSY | 1 |
| 21 | G760 | 800164 | 30" HEX SHAFT ASSY | 1 |
| 21 | G860 | 800165 | 34" HEX SHAFT ASSY | 1 |

CASSETTE VERTICUTTER

| ITEM NO. | PART NUMBER | DESCRIPTION | Default/QTY. |
|----------|--------------|------------------------------------|--------------|
| 1 | 062662_REV1 | BEARING 6205-2RS 3 | 2 |
| 2 | 228042_REV0 | CIRCLIP D1300 0520 | 2 |
| 3 | 228092_REV1 | SHIM ID 25.8 X 1 THK | 1 |
| 4 | 229220_REV2 | L.H. NON-CUT CASSETTE S'PLATE W.A. | 1 |
| 5 | 229221_REV2 | R.H. NON-CUT CASSETTE S'PLATE W.A. | 1 |
| 6 | 229289_REV1 | BEARING HOUSING NON-CUTTER | 2 |
| 7 | 229290_REV1 | VERTICUT BLADE | 58 |
| 8 | 229296_REV1 | 34" TIE BAR | 2 |
| 9 | 229298_REV1 | 34" HANDLE TIE BAR | 1 |
| 10 | 229299_REV1 | DRIVEN / FEMALE COUPLING | 1 |
| 11 | 229318_REV2 | BEARING COVER | 1 |
| 12 | 229350_REV1 | 34" NON CUTTER CASSETTE BAR | 1 |
| 13 | 229354_REV1 | 34" NON CUTTER DEFLECTOR W.A. | 1 |
| 14 | 229355_REV1 | DEFLECTOR PLATE BRACKET | 2 |
| 15 | 229357_REV1 | BLADE SPACER | 57 |
| 16 | 229385_REV2 | STOP BOLT | 1 |
| 17 | 229483_REV1 | WASHER TAB 30MM | 1 |
| 18 | 229534_REV1 | FAN BLADE LARGE | 57 |
| 19 | 229580_REV0 | DECAL INSPECTION | 1 |
| 20 | 230326_REV0 | BEARING SPACER CASSETTE OUTER | 2 |
| 21 | 800165_REV1 | 34" HEX SHAFT ASSY | 1 |
| 22 | SP01016_REV0 | BUTTON HEAD M6 X 12 | 2 |
| 23 | SP01019_REV0 | BUTTON HEAD M6 X 16 | 2 |
| 24 | SP01045_REV0 | HEX SET SCREW M8 X 25 | 3 |
| 25 | SP01058_REV0 | CSK CAP HEAD M8 X 20 | 3 |
| 26 | SP01059_REV0 | HEX SET SCREW M12 X 25 | 5 |
| 27 | SP02004_REV0 | NUT M6 NYLOC | 4 |
| 28 | SP02015_REV0 | NUT 3/8" UNF | 2 |
| 29 | SP02027_REV0 | NUT M30 LOCK (THIN) | 1 |
| 30 | SP03004_REV0 | WASHER M8 TOOTHED | 3 |
| 31 | SP03005_REV0 | WASHER M10 TOOTHED | 2 |
| 32 | SP03007_REV0 | WASHER M6 X 20 | 2 |
| 33 | SP03011_REV0 | WASHER M10 FORM A | 2 |
| 34 | SP03012_REV0 | WASHER M12 FORM A | 6 |

CASSETTE SCARIFIER



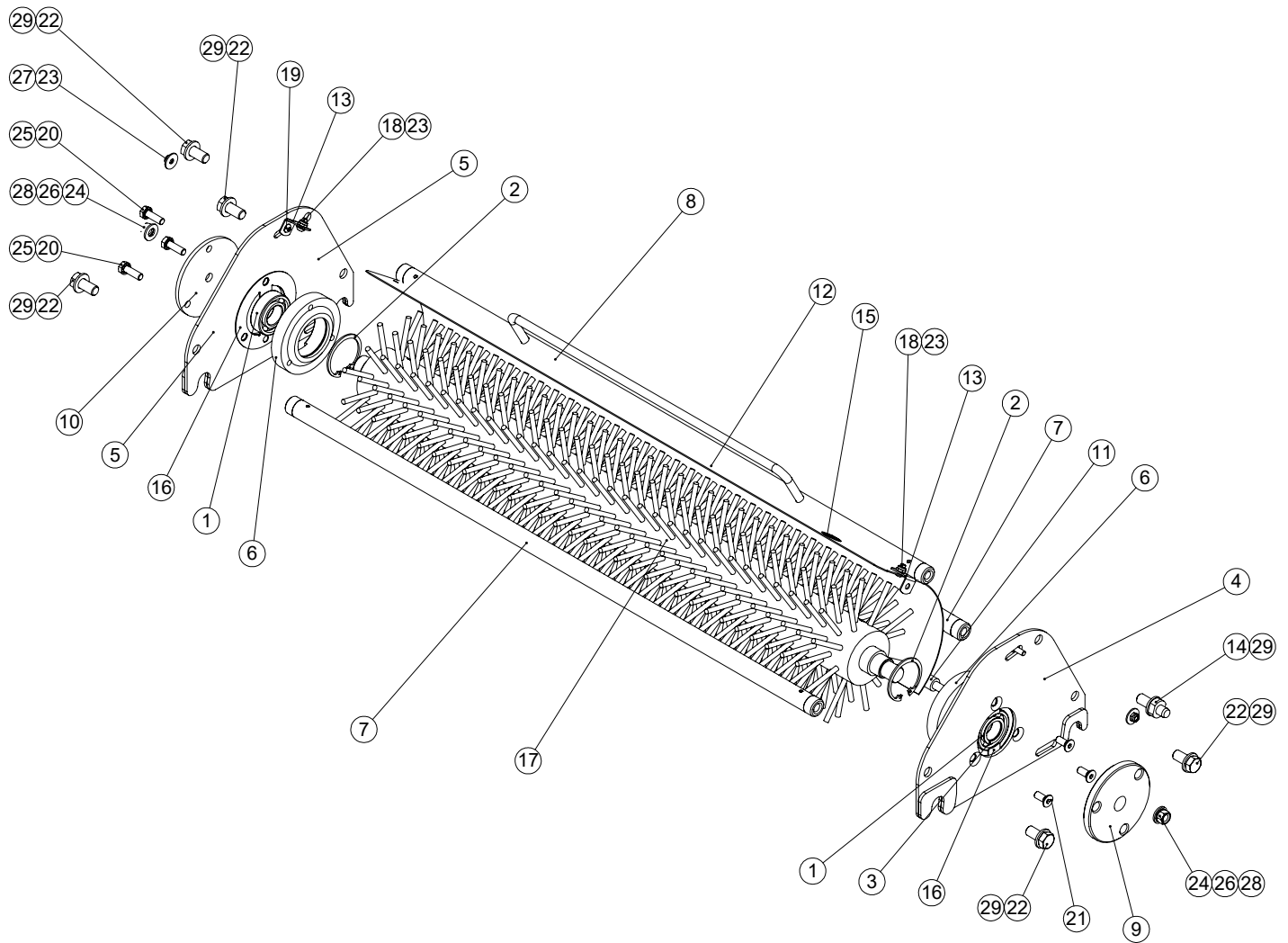
MODEL DIFFERENCES

| ITEM No. | MODEL | PART NUMBER | DESCRIPTION | QTY |
|----------|-----------------------------|-------------|-------------------------------|-------------|
| 7 | D055/3,D053/3, D054/3 | 229291 | 1mm SCARIFIER BLADE | AS REQUIRED |
| 7 | D055/4,D053/4, D054/4 | 229418 | 2mm SCARIFIER BLADE | AS REQUIRED |
| 7 | D055/4TT,D053/4TT, D054/4TT | 230106 | TT SCARIFIER BLADE | AS REQUIRED |
| 8 | G660 | 229657 | 26" TIE BAR | 2 |
| 8 | G760 | 229295 | 30" TIE BAR | 2 |
| 8 | G860 | 229296 | 34" TIE BAR | 2 |
| 9 | G660 | 229658 | 26" HANDLE TIE BAR | 1 |
| 9 | G760 | 229297 | 30" HANDLE TIE BAR | 1 |
| 9 | G860 | 229298 | 34" HANDLE TIE BAR | 1 |
| 12 | G660 | 229660 | 26" NON CUTTER CASSETTE BAR | 1 |
| 12 | G760 | 229349 | 30" NON CUTTER CASSETTE BAR | 1 |
| 12 | G860 | 229350 | 34" NON CUTTER CASSETTE BAR | 1 |
| 13 | G660 | 229663 | 26" NON CUTTER DEFLECTOR W.A. | 1 |
| 13 | G760 | 229353 | 30" NON CUTTER DEFLECTOR W.A. | 1 |
| 13 | G860 | 229354 | 34" NON CUTTER DEFLECTOR W.A. | 1 |
| 21 | G660 | 800168 | 26" HEX SHAFT ASSY | 1 |
| 21 | G760 | 800164 | 30" HEX SHAFT ASSY | 1 |
| 21 | G860 | 800165 | 34" HEX SHAFT ASSY | 1 |

CASSETTE SCARIFIER

| ITEM NO. | PART NUMBER | DESCRIPTION | Default/QTY. |
|----------|--------------|------------------------------------|--------------|
| 1 | 062662_REV1 | BEARING 6205-2RS 3 | 2 |
| 2 | 228042_REV0 | CIRCLIP D1300 0520 | 2 |
| 3 | 228092_REV1 | SHIM ID 25.8 X 1 THK | 1 |
| 4 | 229220_REV2 | L.H. NON-CUT CASSETTE S'PLATE W.A. | 1 |
| 5 | 229221_REV2 | R.H. NON-CUT CASSETTE S'PLATE W.A. | 1 |
| 6 | 229289_REV1 | BEARING HOUSING NON-CUTTER | 2 |
| 7 | 229291_REV1 | 1MM SCARIFIER BLADE | 58 |
| 8 | 229296_REV1 | 34" TIE BAR | 2 |
| 9 | 229298_REV1 | 34" HANDLE TIE BAR | 1 |
| 10 | 229299_REV1 | DRIVEN / FEMALE COUPLING | 1 |
| 11 | 229318_REV2 | BEARING COVER | 1 |
| 12 | 229350_REV1 | 34" NON CUTTER CASSETTE BAR | 1 |
| 13 | 229354_REV1 | 34" NON CUTTER DEFLECTOR W.A. | 1 |
| 14 | 229355_REV1 | DEFLECTOR PLATE BRACKET | 2 |
| 15 | 229357_REV1 | BLADE SPACER | 57 |
| 16 | 229385_REV2 | STOP BOLT | 1 |
| 17 | 229483_REV1 | WASHER TAB 30MM | 1 |
| 18 | 229534_REV1 | FAN BLADE LARGE | 57 |
| 19 | 229580_REV0 | DECAL INSPECTION | 1 |
| 20 | 230326_REV0 | BEARING SPACER CASSETTE OUTER | 2 |
| 21 | 800165_REV1 | 34" HEX SHAFT ASSY | 1 |
| 22 | SP01016_REV0 | BUTTON HEAD M6 X 12 | 2 |
| 23 | SP01019_REV0 | BUTTON HEAD M6 X 16 | 2 |
| 24 | SP01045_REV0 | HEX SET SCREW M8 X 25 | 3 |
| 25 | SP01058_REV0 | CSK CAP HEAD M8 X 20 | 3 |
| 26 | SP01059_REV0 | HEX SET SCREW M12 X 25 | 5 |
| 27 | SP02004_REV0 | NUT M6 NYLOC | 4 |
| 28 | SP02015_REV0 | NUT 3/8" UNF | 2 |
| 29 | SP02027_REV0 | NUT M30 LOCK (THIN) | 1 |
| 30 | SP03004_REV0 | WASHER M8 TOOTHED | 3 |
| 31 | SP03005_REV0 | WASHER M10 TOOTHED | 2 |
| 32 | SP03007_REV0 | WASHER M6 X 20 | 2 |
| 33 | SP03011_REV0 | WASHER M10 FORM A | 2 |
| 34 | SP03012_REV0 | WASHER M12 FORM A | 6 |

CASSETTE BRUSH



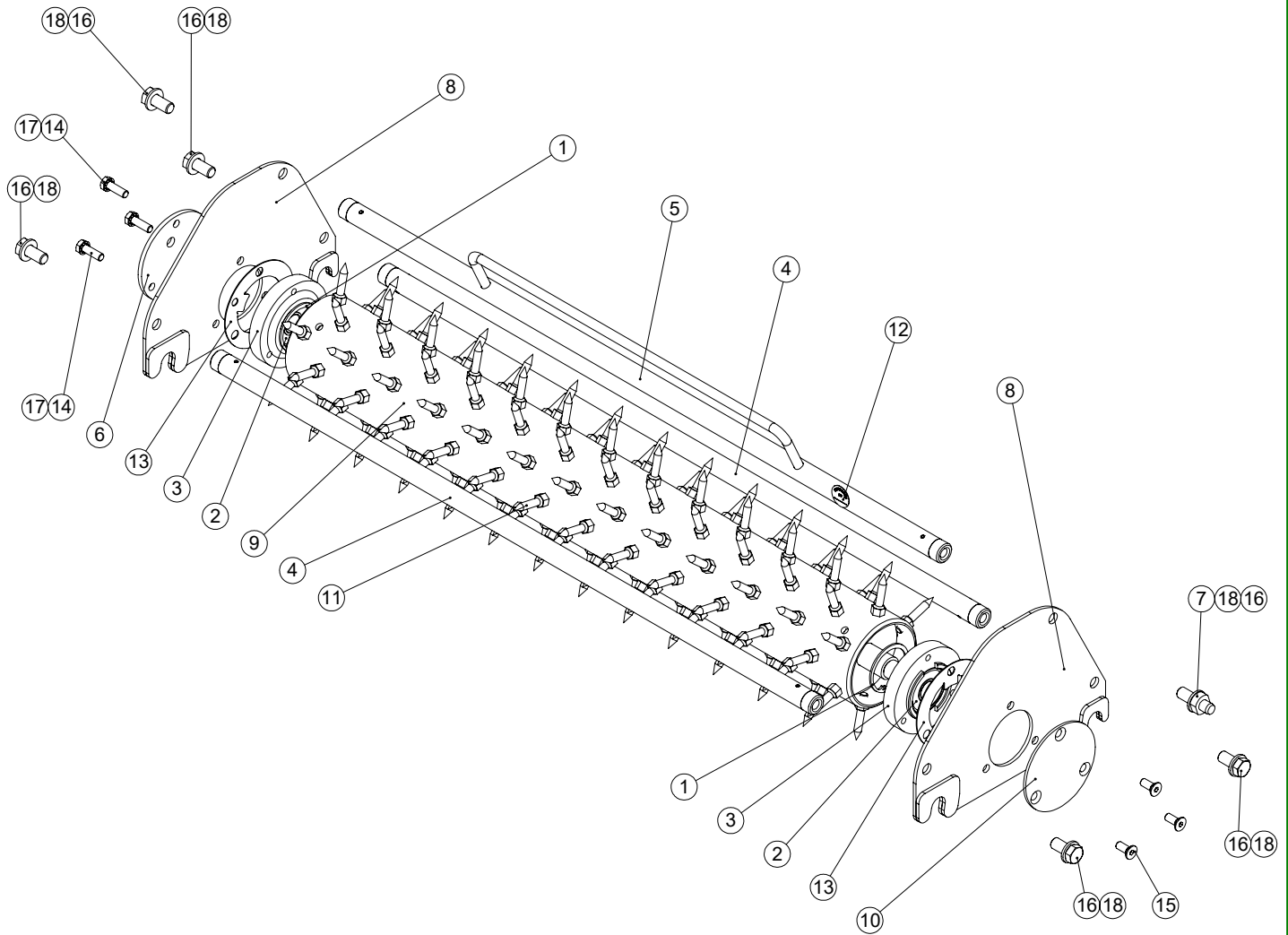
MODEL DIFFERENCES

| ITEM No. | MODEL | PART NUMBER | DESCRIPTION | QTY |
|----------|-------|-------------|-------------------------------|-----|
| 7 | G660 | 229657 | 26" TIE BAR | 2 |
| 7 | G760 | 229295 | 30" TIE BAR | 2 |
| 7 | G860 | 229296 | 34" TIE BAR | 2 |
| 8 | G660 | 229658 | 26" HANDLE TIE BAR | 1 |
| 8 | G760 | 229297 | 30" HANDLE TIE BAR | 1 |
| 8 | G860 | 229298 | 34" HANDLE TIE BAR | 1 |
| 11 | G660 | 229660 | 26" NON CUTTER CASSETTE BAR | 1 |
| 11 | G760 | 229349 | 30" NON CUTTER CASSETTE BAR | 1 |
| 11 | G860 | 229350 | 34" NON CUTTER CASSETTE BAR | 1 |
| 12 | G660 | 229663 | 26" NON CUTTER DEFLECTOR W.A. | 1 |
| 12 | G760 | 229353 | 30" NON CUTTER DEFLECTOR W.A. | 1 |
| 12 | G860 | 229354 | 34" NON CUTTER DEFLECTOR W.A. | 1 |
| 17 | G660 | 800173 | BRUSH SHAFT ASSY 26" SOFT | 1 |
| 17 | G760 | 800189 | BRUSH SHAFT ASSY 30" SOFT | 1 |
| 17 | G860 | 800167 | BRUSH SHAFT ASSY 34" SOFT | 1 |
| 17 | G660 | 800172 | BRUSH SHAFT ASSY 26" HARD | 1 |
| 17 | G760 | 800183 | BRUSH SHAFT ASSY 30" HARD | 1 |
| 17 | G860 | 800184 | BRUSH SHAFT ASSY 34" HARD | 1 |
| 17 | G660 | 80192 | BRUSH SHAFT ASSY 26" MULTI | 1 |
| 17 | G760 | 800190 | BRUSH SHAFT ASSY 30" MULTI | 1 |
| 17 | G860 | 800191 | BRUSH SHAFT ASSY 34" MULTI | 1 |

CASSETTE BRUSH

| ITEM NO. | PART NUMBER | DESCRIPTION | QTY. |
|----------|--------------|------------------------------------|------|
| 1 | 062662_REV1 | BEARING 6205-2RS 3 | 2 |
| 2 | 228042_REV0 | CIRCLIP D1300 0520 | 2 |
| 3 | 228092_REV1 | SHIM ID 25.8 X 1 THK | 1 |
| 4 | 229220_REV2 | L.H. NON-CUT CASSETTE S'PLATE W.A. | 1 |
| 5 | 229221_REV2 | R.H. NON-CUT CASSETTE S'PLATE W.A. | 1 |
| 6 | 229289_REV1 | BEARING HOUSING NON-CUTTER | 2 |
| 7 | 229296_REV1 | 34" TIE BAR | 2 |
| 8 | 229298_REV1 | 34" HANDLE TIE BAR | 1 |
| 9 | 229299_REV1 | DRIVEN / FEMALE COUPLING | 1 |
| 10 | 229318_REV2 | BEARING COVER | 1 |
| 11 | 229350_REV1 | 34" NON CUTTER CASSETTE BAR | 1 |
| 12 | 229354_REV1 | 34" NON CUTTER DEFLECTOR W.A. | 1 |
| 13 | 229355_REV1 | DEFLECTOR PLATE BRACKET | 2 |
| 14 | 229385_REV2 | STOP BOLT | 1 |
| 15 | 229580_REV0 | DECAL INSPECTION | 1 |
| 16 | 230326_REV0 | BEARING SPACER CASSETTE OUTER | 2 |
| 17 | 800191_REV2 | BRUSH SHAFT ASSEMBLY 34" MULTI | 1 |
| 18 | SP01016_REV0 | BUTTON HEAD M6 X 12 | 2 |
| 19 | SP01019_REV0 | BUTTON HEAD M6 X 16 | 2 |
| 20 | SP01045_REV0 | HEX SET SCREW M8 X 25 | 3 |
| 21 | SP01058_REV0 | CSK CAP HEAD M8 X 20 | 3 |
| 22 | SP01059_REV0 | HEX SET SCREW M12 X 25 | 5 |
| 23 | SP02004_REV0 | NUT M6 NYLOC | 4 |
| 24 | SP02015_REV0 | NUT 3/8" UNF | 2 |
| 25 | SP03004_REV0 | WASHER M8 TOOTHED | 3 |
| 26 | SP03005_REV0 | WASHER M10 TOOTHED | 2 |
| 27 | SP03007_REV0 | WASHER M6 X 20 | 2 |
| 28 | SP03011_REV0 | WASHER M10 FORM A | 2 |
| 29 | SP03012_REV0 | WASHER M12 FORM A | 6 |

CASSETTE SORREL ROLLER



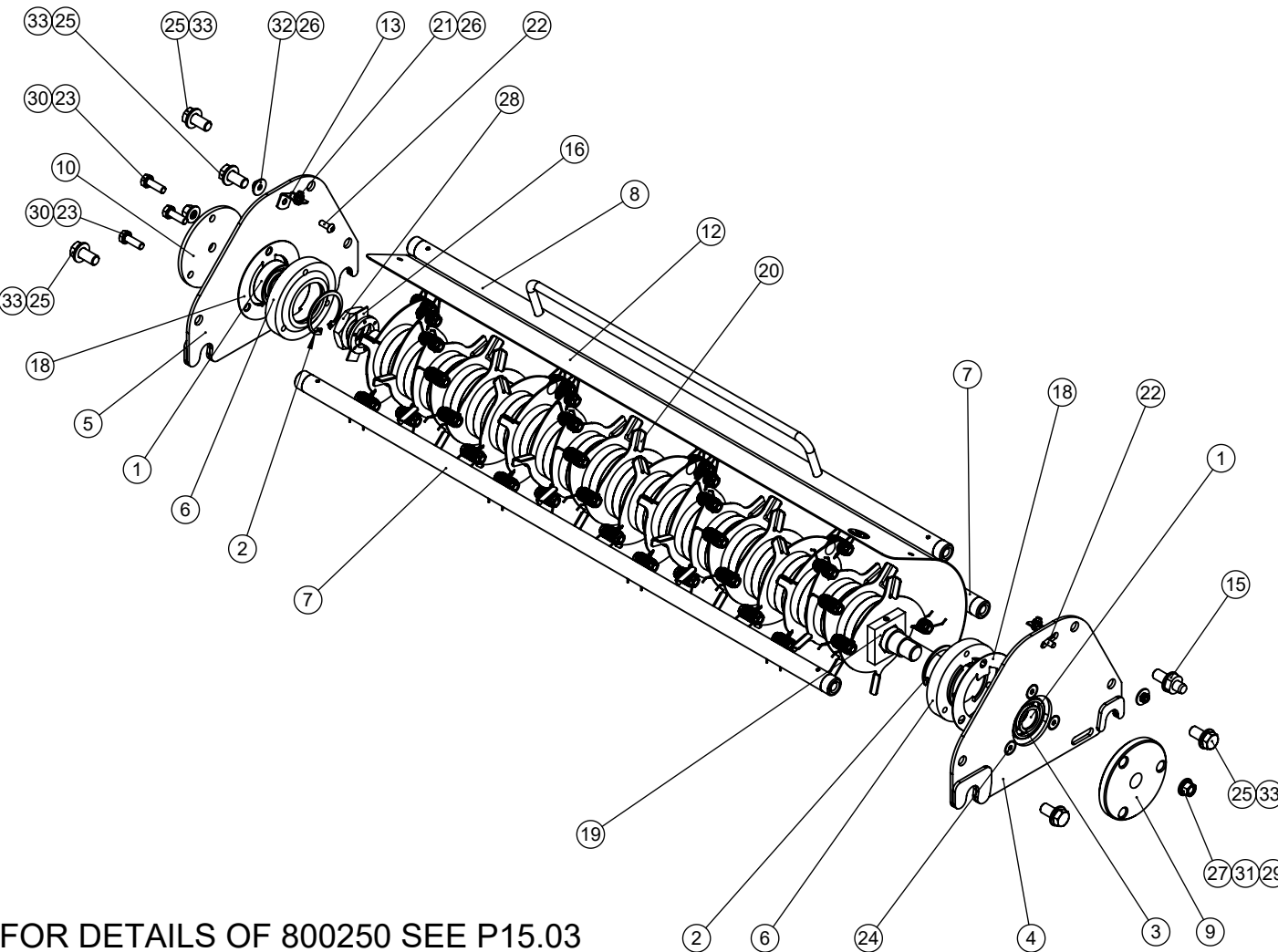
MODEL DIFFERENCES

| ITEM No. | MODEL | PART NUMBER | DESCRIPTION | QTY |
|----------|-------|-------------|--------------------|-----|
| 4 | G660 | 229657 | 26" TIE BAR | 2 |
| 4 | G760 | 229295 | 30" TIE BAR | 2 |
| 4 | G860 | 229296 | 34" TIE BAR | 2 |
| 5 | G660 | 229658 | 26" HANDLE TIE BAR | 1 |
| 5 | G760 | 229297 | 30" HANDLE TIE BAR | 1 |
| 5 | G860 | 229298 | 34" HANDLE TIE BAR | 1 |
| 9 | G660 | 229669 | SORREL ROLLER 26" | 1 |
| 9 | G760 | 229503 | SORREL ROLLER 30" | 1 |
| 9 | G860 | 229504 | SORREL ROLLER 34" | 1 |

CASSETTE SORREL ROLLER

| ITEM NO. | PART NUMBER | DESCRIPTION | QTY. |
|----------|--------------|-------------------------------|------|
| 1 | 228042_REV0 | CIRCLIP D1300 0520 | 2 |
| 2 | 228079_REV1 | BEARING 6304 2RS | 2 |
| 3 | 229289_REV1 | BEARING HOUSING NON-CUTTER | 2 |
| 4 | 229296_REV1 | 34" TIE BAR | 2 |
| 5 | 229298_REV1 | 34" HANDLE TIE BAR | 1 |
| 6 | 229317_REV1 | BEARING COVER SORREL R.H. | 1 |
| 7 | 229385_REV2 | STOP BOLT | 1 |
| 8 | 229502_REV1 | SORREL SIDE PLATE W.A. | 2 |
| 9 | 229504_REV1 | SORREL ROLLER 34" | 1 |
| 10 | 229539_REV1 | BEARING COVER SORREL | 1 |
| 11 | 229560_REV1 | 8MM SORREL SPIKE | 150 |
| 12 | 229580_REV0 | DECAL INSPECTION | 1 |
| 13 | 230326_REV0 | BEARING SPACER CASSETTE OUTER | 2 |
| 14 | SP01045_REV0 | HEX SET SCREW M8 X 25 | 3 |
| 15 | SP01058_REV0 | CSK CAP HEAD M8 X 20 | 3 |
| 16 | SP01059_REV0 | HEX SET SCREW M12 X 25 | 5 |
| 17 | SP03004_REV0 | WASHER M8 TOOTHED | 3 |
| 18 | SP03012_REV0 | WASHER M12 FORM A | 6 |

CASSETTE SPRING TINE



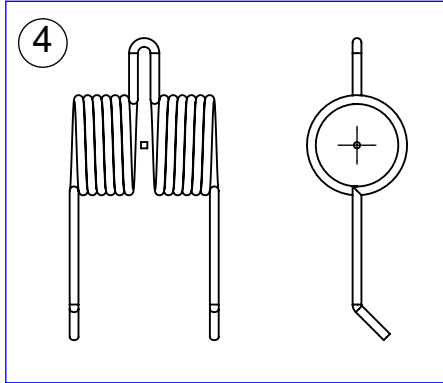
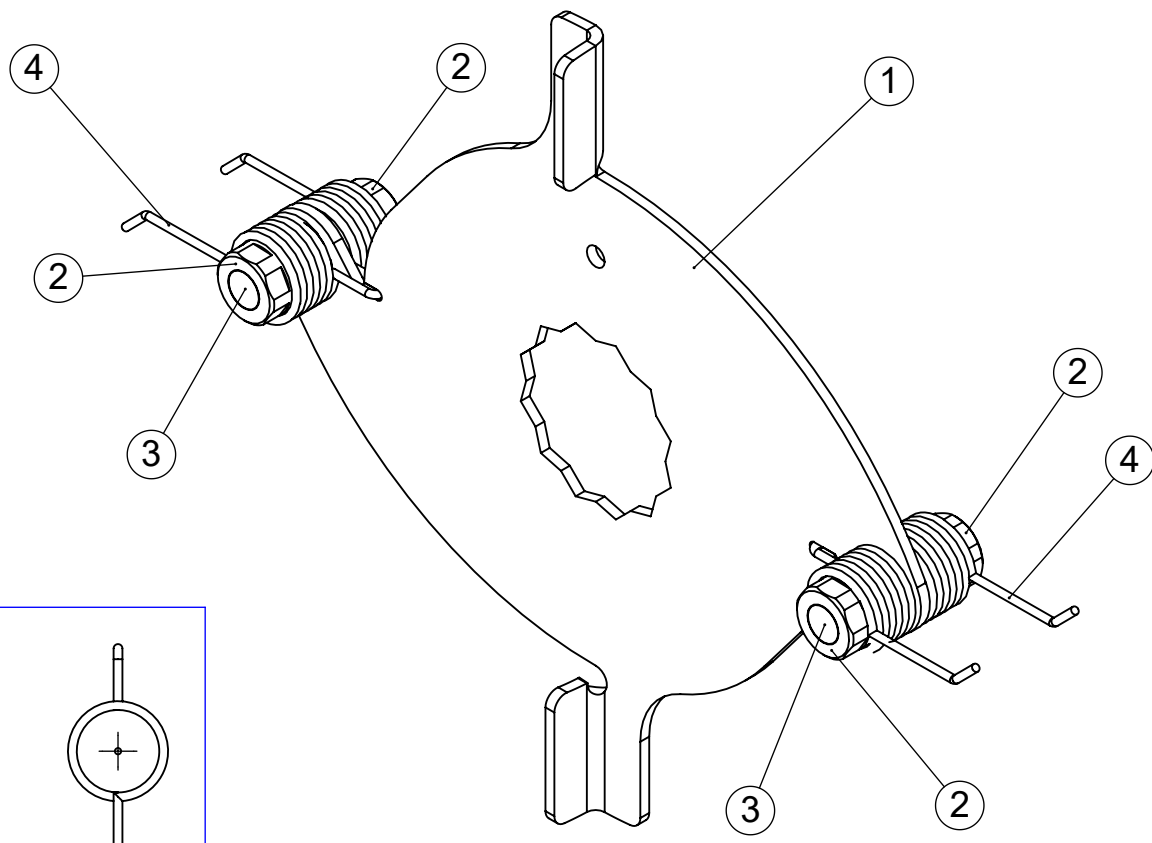
FOR DETAILS OF 800250 SEE P15.03

| MODEL DIFFERENCES | | | | |
|-------------------|-------|-------------|-------------------------------|-----|
| ITEM No. | MODEL | PART NUMBER | DESCRIPTION | QTY |
| 7 | G660 | 229657 | 26" TIE BAR | 2 |
| 7 | G760 | 229295 | 30" TIE BAR | 2 |
| 7 | G860 | 229296 | 34" TIE BAR | 2 |
| 8 | G660 | 229658 | 26" HANDLE TIE BAR | 1 |
| 8 | G760 | 229297 | 30" HANDLE TIE BAR | 1 |
| 8 | G860 | 229298 | 34" HANDLE TIE BAR | 1 |
| 11 | G660 | 229660 | 26" NON CUTTER CASSETTE BAR | 1 |
| 11 | G760 | 229349 | 30" NON CUTTER CASSETTE BAR | 1 |
| 11 | G860 | 229350 | 34" NON CUTTER CASSETTE BAR | 1 |
| 12 | G660 | 229663 | 26" NON CUTTER DEFLECTOR W.A. | 1 |
| 12 | G760 | 229353 | 30" NON CUTTER DEFLECTOR W.A. | 1 |
| 12 | G860 | 229354 | 34" NON CUTTER DEFLECTOR W.A. | 1 |
| | | | | |
| | | | | |
| | | | | |
| | | | | |
| | | | | |
| | | | | |
| | | | | |
| | | | | |
| | | | | |

CASSETTE SPRING TINE

| ITEM NO. | PART NUMBER | DESCRIPTION | QTY. |
|----------|--------------|------------------------------------|------|
| 1 | 062662_REV1 | BEARING 6205-2RS 3 | 2 |
| 2 | 228042_REV0 | CIRCLIP D1300 0520 | 2 |
| 3 | 228092_REV1 | SHIM ID 25.8 X 1 THK | 1 |
| 4 | 229220_REV2 | L.H. NON-CUT CASSETTE S'PLATE W.A. | 1 |
| 5 | 229221_REV2 | R.H. NON-CUT CASSETTE S'PLATE W.A. | 1 |
| 6 | 229289_REV1 | BEARING HOUSING NON-CUTTER | 2 |
| 7 | 229296_REV1 | 34" TIE BAR | 2 |
| 8 | 229298_REV1 | 34" HANDLE TIE BAR | 1 |
| 9 | 229299_REV1 | DRIVEN / FEMALE COUPLING | 1 |
| 10 | 229318_REV2 | BEARING COVER | 1 |
| 11 | 229350_REV1 | 34" NON CUTTER CASSETTE BAR | 1 |
| 12 | 229354_REV1 | 34" NON CUTTER DEFLECTOR W.A. | 1 |
| 13 | 229355_REV1 | DEFLECTOR PLATE BRACKET | 2 |
| 14 | 229357_REV1 | BLADE SPACER | 63 |
| 15 | 229385_REV2 | STOP BOLT | 1 |
| 16 | 229483_REV1 | WASHER TAB 30MM | 1 |
| 17 | 229580_REV0 | DECAL INSPECTION | 1 |
| 18 | 230326_REV0 | BEARING SPACER CASSETTE OUTER | 2 |
| 19 | 800165_REV1 | 34" HEX SHAFT ASSY | 1 |
| 20 | 800250_REV0 | SPRING BLADE ASSY | 22 |
| 21 | SP01016_REV0 | BUTTON HEAD M6 X 12 | 2 |
| 22 | SP01019_REV0 | BUTTON HEAD M6 X 16 | 2 |
| 23 | SP01045_REV0 | HEX SET SCREW M8 X 25 | 3 |
| 24 | SP01058_REV0 | CSK CAP HEAD M8 X 20 | 3 |
| 25 | SP01059_REV0 | HEX SET SCREW M12 X 25 | 5 |
| 26 | SP02004_REV0 | NUT M6 NYLOC | 4 |
| 27 | SP02015_REV0 | NUT 3/8" UNF | 2 |
| 28 | SP02027_REV0 | NUT M30 LOCK (THIN) | 1 |
| 29 | SP03002_REV0 | WASHER 3/8" | 2 |
| 30 | SP03004_REV0 | WASHER M8 TOOTHED | 3 |
| 31 | SP03005_REV0 | WASHER M10 TOOTHED | 2 |
| 32 | SP03007_REV0 | WASHER M6 X 20 | 2 |
| 33 | SP03012_REV0 | WASHER M12 FORM A | 6 |

800250 SPRING BLADE ASSY



| ITEM NO. | PART NUMBER | DESCRIPTION | QTY. |
|----------|--------------|-----------------------|------|
| 1 | 230654_REV0 | BLADE SPRING TINE | 1 |
| 2 | 230659_REV0 | SPRING NUT | 4 |
| 3 | SP13008_REV1 | SPRING TORSION 1.4 | 2 |
| 4 | SP01164_REV0 | GRUB SCREW M8 X 30 SS | 2 |



DENNIS, Ashbourne Road, Kirk Langley, Derbyshire, DE6 4NJ, England

**Tel: +44 (0) 1332 824 777
Fax: +44 (0) 1332 824 525**

**Email: sales@dennisuk.com
Email: spares@dennisuk.com**

www.dennisuk.com