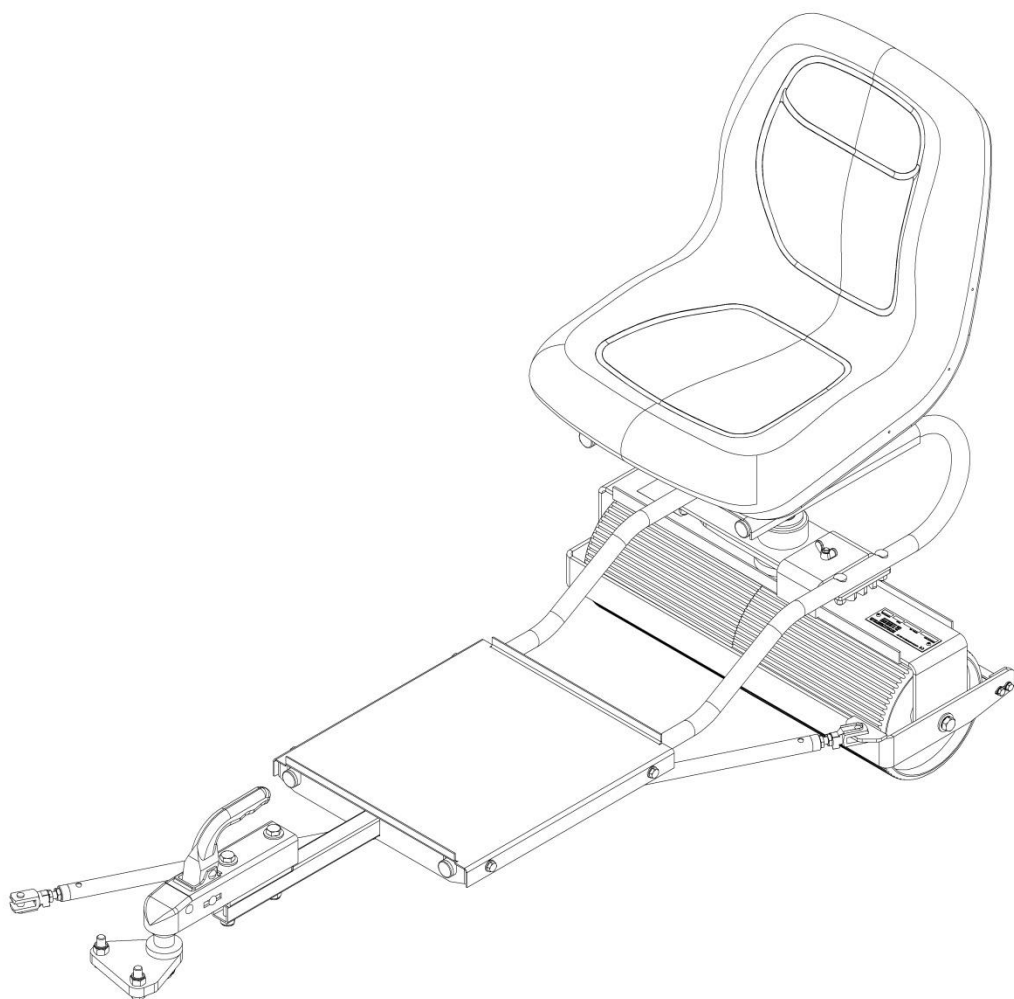




TRAILER SEAT ROLLER G-SERIES & PREMIER

INSTRUCTION MANUAL



CERTIFICATE OF CONFORMITY

Manufacturer:- Howardson Ltd, Howardson Works, Kirk Langley, Derby, DE6 4NJ. UK

Owner of Technical Document:- Mr I.D. Howard, Howardson Ltd, Howardson Works Kirk Langley, Derby, DE6 4NJ, UK

I the under signed Declare that these machines:-

D025-SRG – Self Steer Suspension Seat

CN Code: 84331159

Complies with the applicable requirements of:-
- Machine Directive 2006/42/EC

Managing Director



Ian Howard

SERIAL NUMBERS



NOTE:-

MAKE A NOTE OF THE SERIAL NUMBER OF YOUR MACHINE AND ALWAYS QUOTE IT IN ANY COMMUNICATION WITH PERSONNEL AT DENNIS.

MACHINE SERIAL NUMBER

ENGINE SERIAL NUMBER

INTRODUCTION

The reliability and quality of performance of the **Trailer Seat Roller** depends upon some simple care maintenance carried out regularly. This manual has been prepared to allow the user to carry out all such work.

It is advisable to read the instructions carefully. Proper care and attention will enable the machine to give a continuous, satisfactory, and reliable service. Failure to carry out regular lubrication and maintenance as outlined in this manual may render any guarantee or warranty invalid.

In the case of any difficulty, or if further information or advice is required, our Service Department is always at your call. In the interests of speed and accuracy of information please quote the serial numbers of the machine and engine when making enquiries.

For the machine, this is to be found on a plate attached to the frame.

	Page
Declaration of Conformity.....	1
Serial Numbers.....	1
Introduction.....	1
Technical Data.....	2
Important Safety Instructions.....	2
Operating Instructions.....	3 - 4
Parts Listings.....	P0 – P7

TECHNICAL DATA

MODEL	TRAILER SEAT ROLLER
WIDTH (mm)	657
LENGTH (mm)	1435
HEIGHT (mm)	978
WEIGHT (Kg)	71
ROLLER WIDTH (mm)	586

Important Safety Instructions



CAUTION:- READ THE INSTRUCTIONS. We want you to obtain the best performance from this machine. If you have any difficulty in carrying out the following instructions please contact your local SISIS dealer.

NEVER

- Carry out adjustments whilst the machine is running.
- Allow any unauthorised person to handle machines in any way at any time.
- Sit on an unconnected seat.

ALWAYS

- Read the operating instructions carefully and understand the controls before commencing work.
- Before starting work always visually check the machine for damage or wear to parts.
- Look out for children or pedestrians when driving the mower.
- Turn off the mower before making any adjustments to the trailer seat roller.

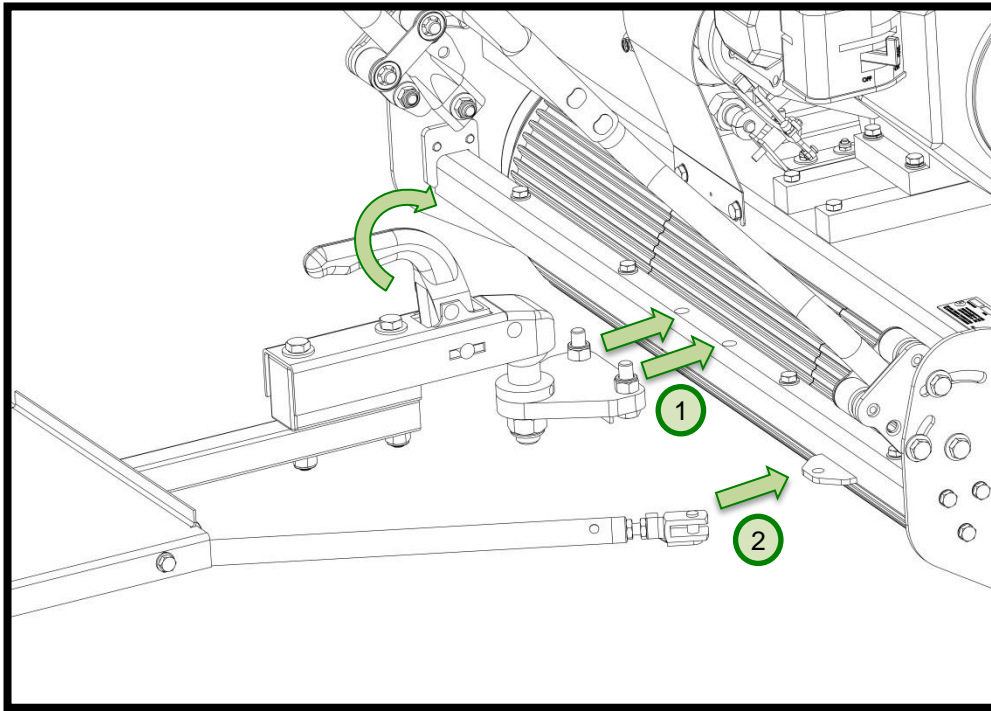
CONNECTING TO THE MOWER

1. Undo the drawbar coupling 50mm as shown with the curved arrow below.
2. Attach the tow bar bracket to the mower by undoing the nut as shown and reattaching them once the bolts are in the correct position. These are shown below with the straight arrows, 1.
3. Attach the steering bar to the mower by undoing the spring clip and reattaching it once in the correct position. This is shown below with the straight single arrow, 2.
4. Once the tow bar bracket and the steering bar are secure, re attach the draw bar coupling by lifting it above the ball hitch and gently lowering it over ensuring the ball hitch is engaged and the handle is horizontal as shown below.



CAUTION –

Take care when removing the drawbar that hands fingers and feet are clear and cannot be trapped.

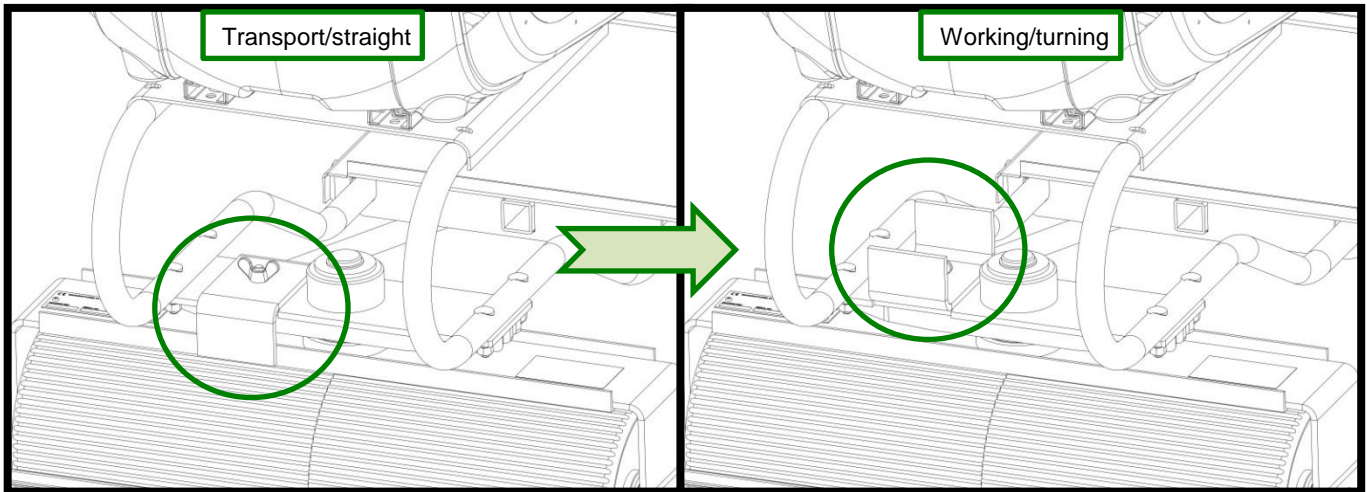


TURNING LOCK

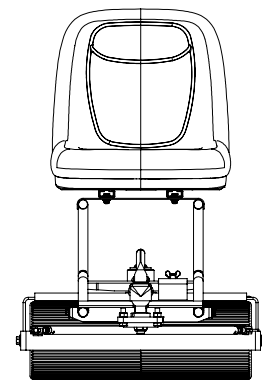
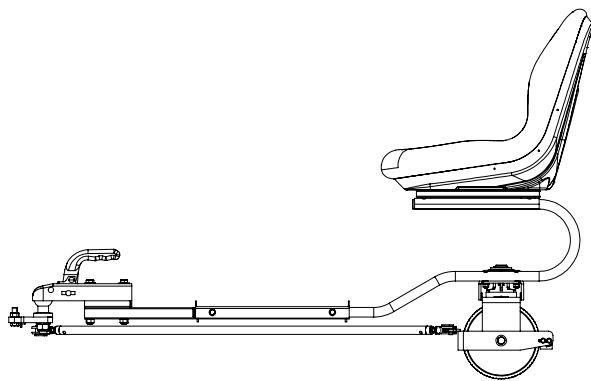
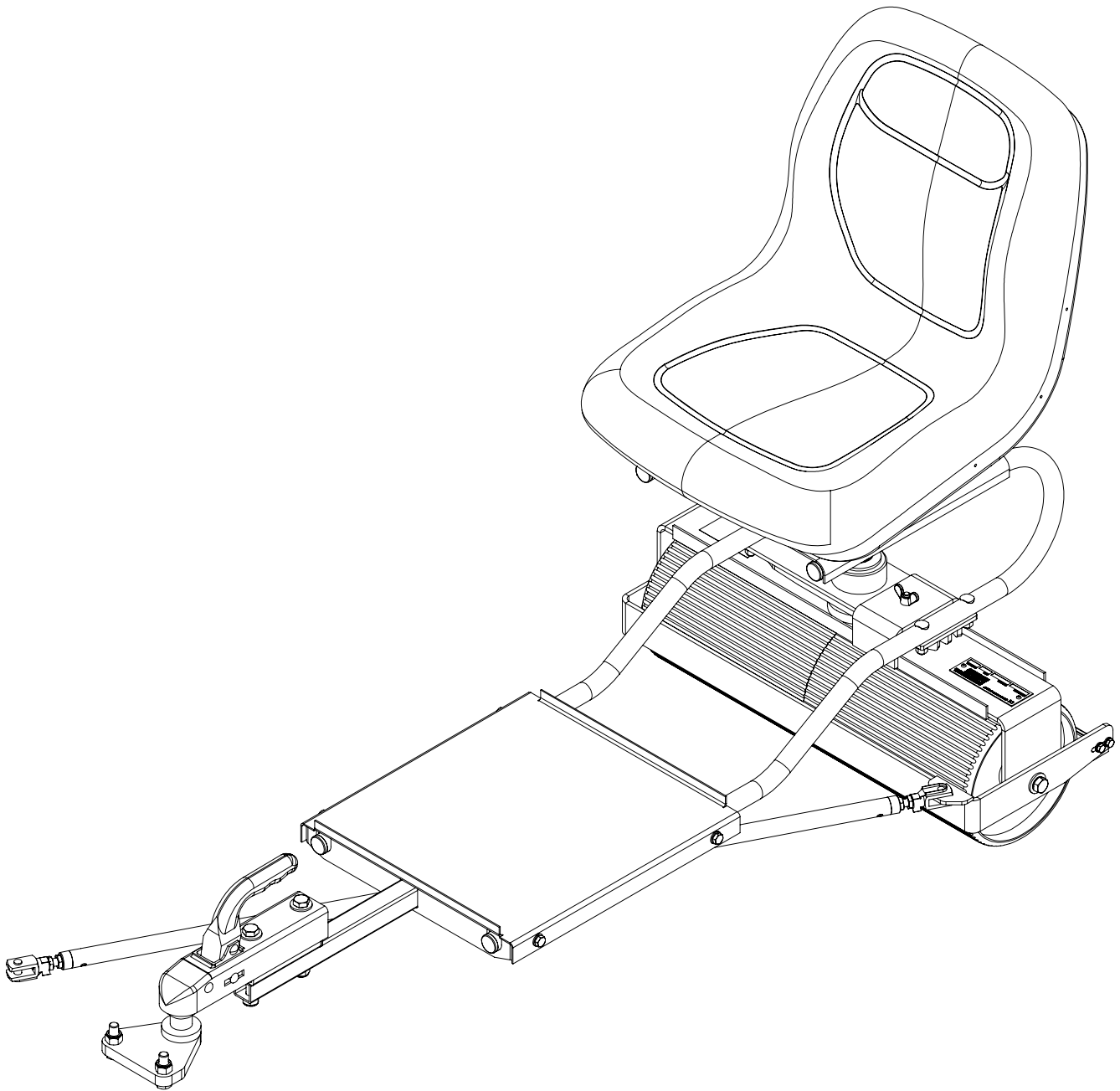
When using the Trailer Seat Roller there is an anti-pivot bracket that can be locked and released. The steering should be locked for transportation to ensure the Trailer Seat Roller is towed in a straight line, and when mowing is in progress the steering should be unlocked to allow for turning.

The picture below illustrates how the turning lock can be applied and removed:

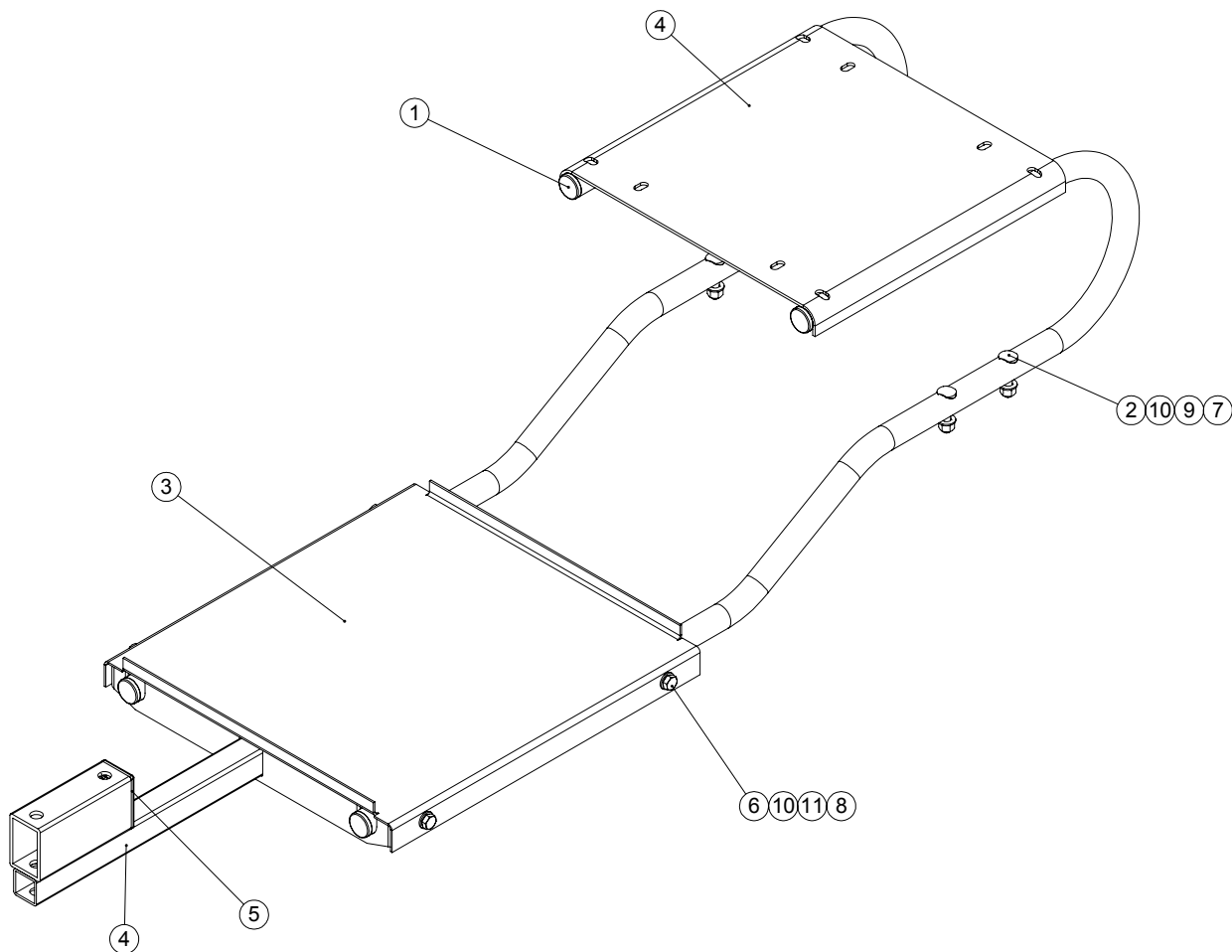
1. Remove the M8 wing nut that secures the Anti-pivot bracket..
2. The Anti-pivot bracket should then be flipped so that the 'U' shape faces up to allow for turning, or the 'U' shape down for straight line work or transportation.
3. Re-apply the M8 wing nut.



SELF STEER SUSPENSION SEAT - PARTS BOOK

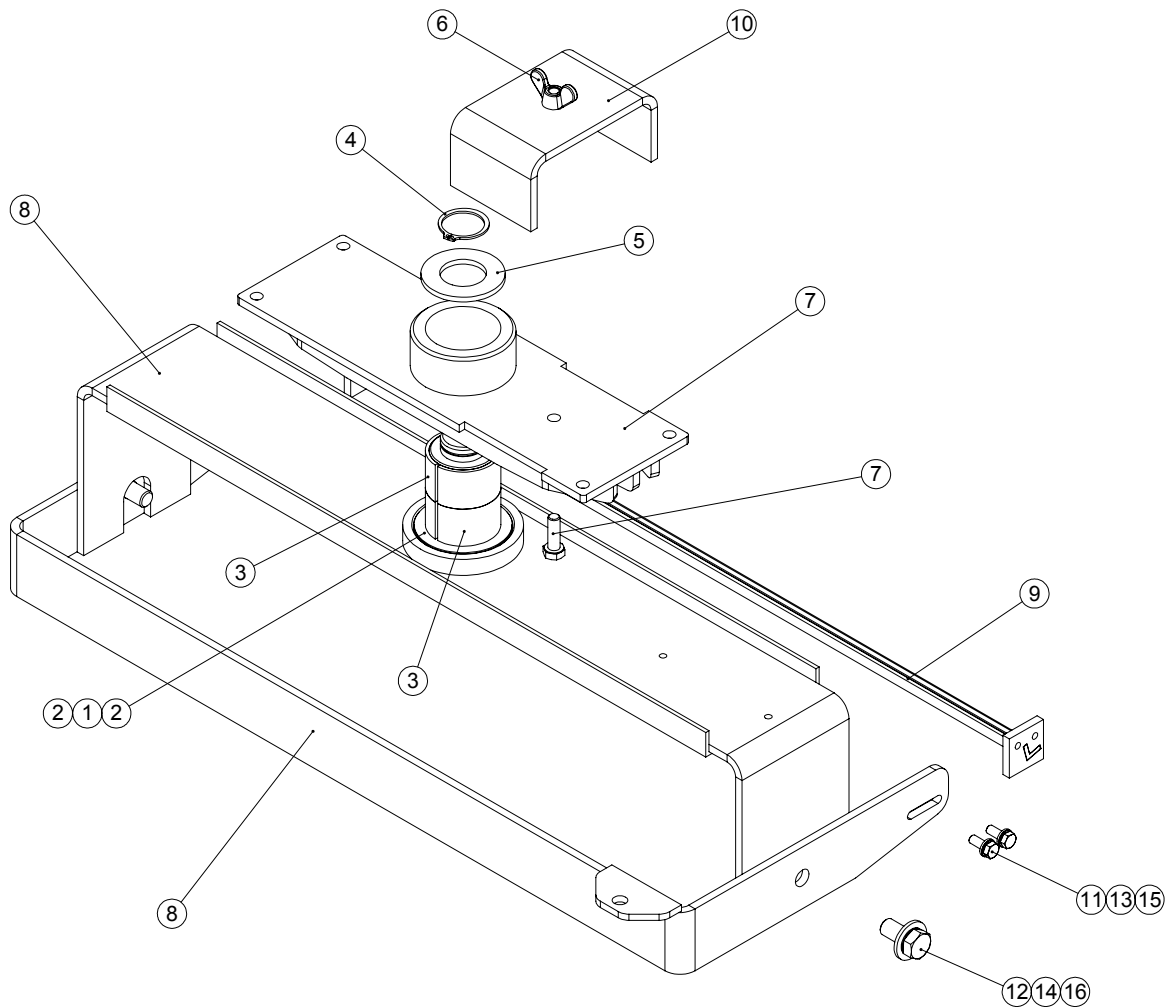


FRAME



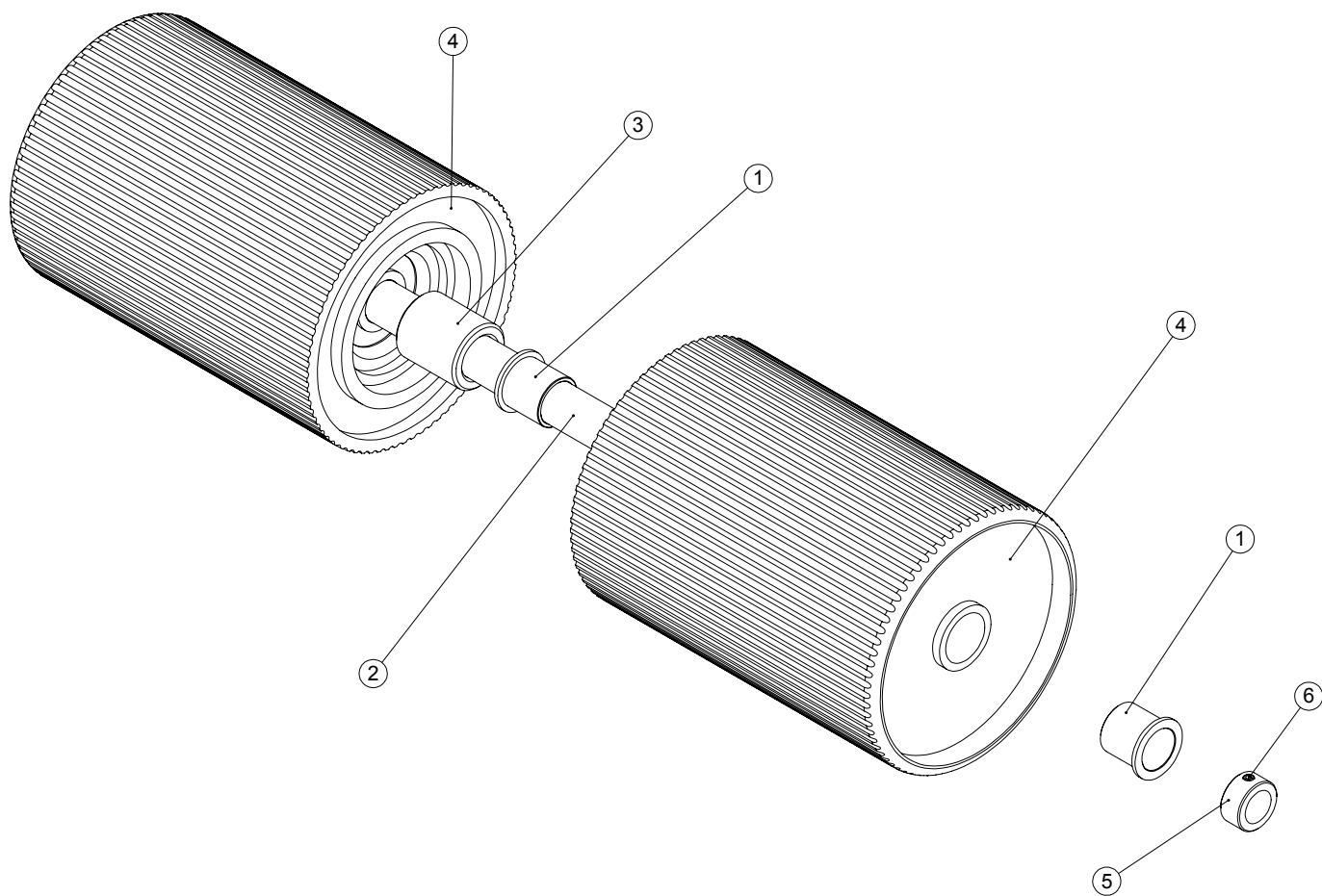
ITEM NO.	PART NUMBER	DESCRIPTION	FRAME/QTY.
1	228024_REV1	1" TUBE BUNG	4
2	228093_REV0	BOLT SADDLE M8 X 43	4
3	229485_REV1	FOOT PLATE	1
4	229525_REV1	FRAME WELD ASSY	1
5	229616_REV1	Trailer Seat Rectangular Insert RCTi 171	1
6	SP01009_REV0	HEX SET SCREW M8 X 20	4
7	SP02005_REV0	NUT M8 STD	4
8	SP02006_REV0	NUT M8 NYLOC (T)	4
9	SP03004_REV0	WASHER M8 TOOTHED	4
10	SP03008_REV0	WASHER M8 FORM A	8
11	SP03015_REV0	WASHER M8 FORM C	4

ROLLER FRAME



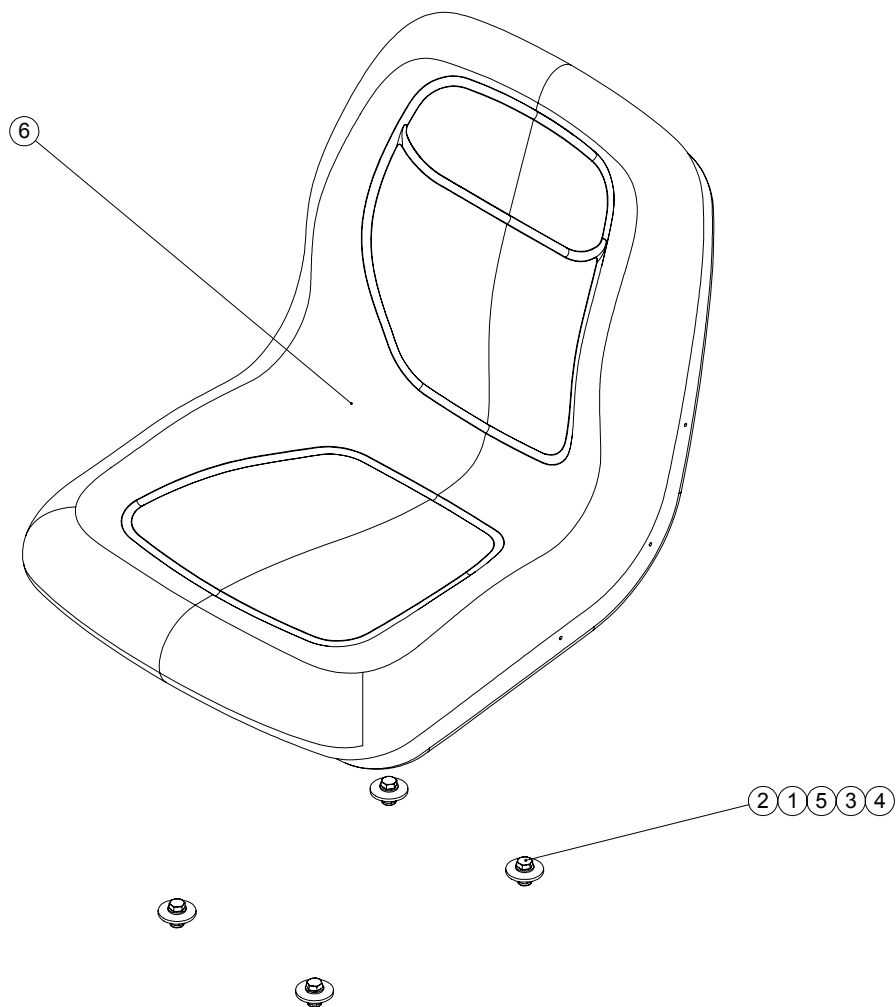
ITEM NO.	PART NUMBER	DESCRIPTION	ROLLER FRAME/QTY.
1	228087_REV0	BEARING THRUST RACE	1
2	228088_REV0	BEARING THRUST WASHER	2
3	228089_REV1	BUSH MB4530 DU	2
4	228090_REV0	CIRCLIP D1400-0300	1
5	228091_REV1	M30 Form C Washer	1
6	228099_REV1	NUT M8 WING	1
7	229439_REV1	TRAILER SEAT BEARING HOUSING	1
8	229443_REV1	ROLLER FRAME ASSY	1
9	229506_REV1	Trailer Seat Rear Roller Scraper w/a	1
10	229567_REV1	ANTI-PIVOT BRACKET	1
11	SP01008_REV0	HEX SET SCREW M6 X 16	4
12	SP01059_REV0	HEX SET SCREW M12 X 25	2
13	SP03003_REV0	WASHER M6 TOOTHED	4
14	SP03006_REV0	WASHER M12 TOOTHED	2
15	SP03010_REV0	WASHER M6 FORM A	4
16	SP03017_REV0	WASHER M12 FORM C	2

ROLLER



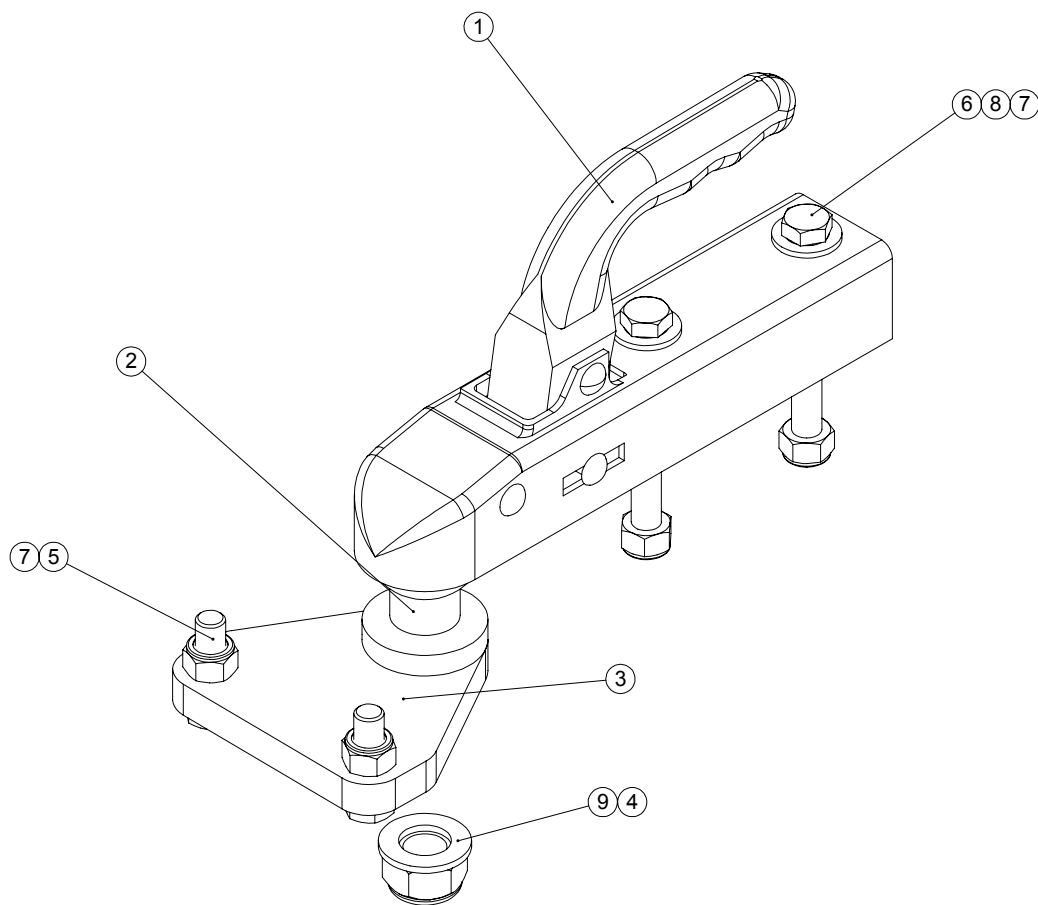
ITEM NO.	PART NUMBER	DESCRIPTION	ROLLER/QTY.
1	229023_REV1	BUSH AJ2024 - 1 1/2"	4
2	229473_REV1	TRAILER SEAT ROLLER SHAFT	1
3	229474_REV1	Trailer Seat Roller Spacer	1
4	229530_REV1	20" trailer seat	2
5	229566_REV1	ROLLER LOCKING COLLAR	2
6	J20467_REV0	GRUB SCREW M8 X 8	2

SEAT



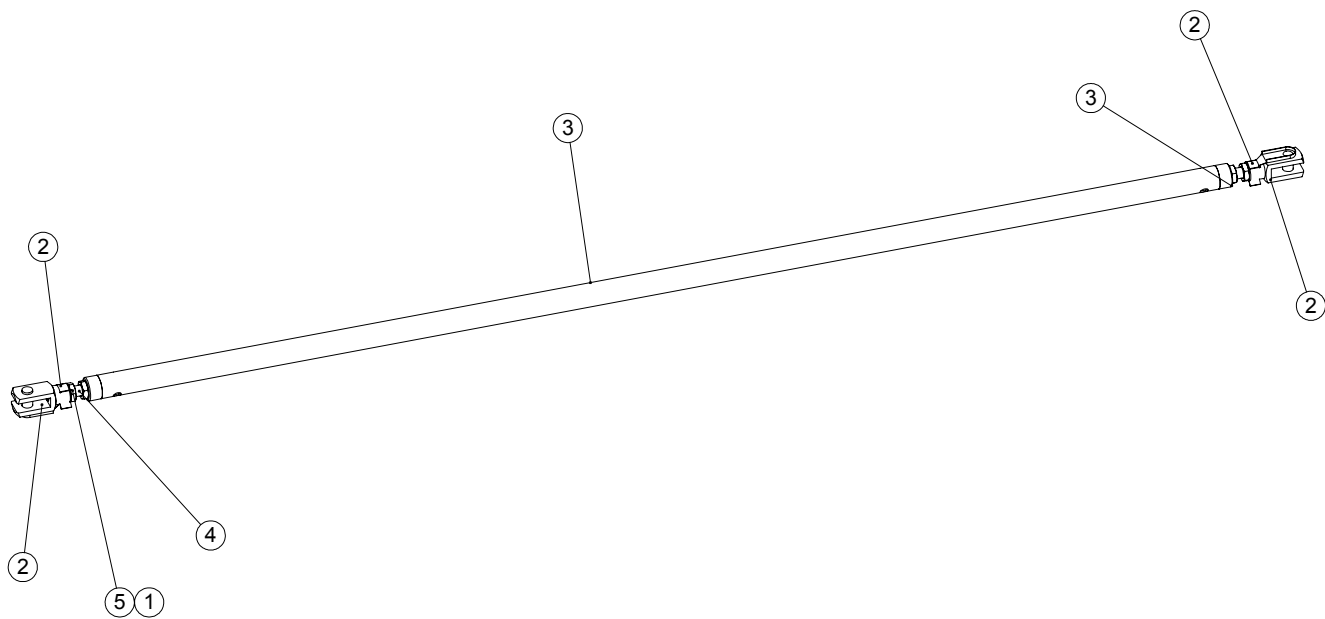
ITEM NO.	PART NUMBER	DESCRIPTION	SEAT/QTY.
1	SP03008_REV0	WASHER M8 FORM A	4
2	SP01009_REV0	HEX SET SCREW M8 X 20	4
3	SP03015_REV0	WASHER M8 FORM C	4
4	SP02006_REV0	NUT M8 NYLOC (T)	4
5	J209249_REV0	WASHER 9 X 35 X 3	4
6	229513_REV1	SEAT	1

TOW SYSTEM



ITEM NO.	PART NUMBER	DESCRIPTION	TOW/QTY.
1	210772_REV0	DRAWBAR COUPLING 50MM BALL	1
2	229613_REV1	BALL HITCH	1
3	229759_REV1	TOWBAR BRACKET W.A.	1
4	E1-1634_REV1	M20 NYLOC T	1
5	SP01078_REV0	HEX SET SCREW M12 X 40	2
6	SP01098_REV0	HEX BOLT M12 X 110	2
7	SP02010_REV0	NUT M12 NYLOC (T)	4
8	SP03017_REV0	WASHER M12 FORM C	2
9	SP03022_REV0	WASHER M20 FORM A	1

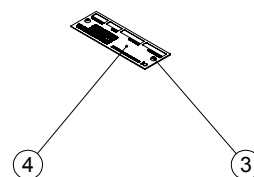
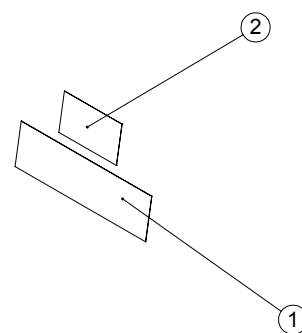
STEERING BAR



ITEM NO.	PART NUMBER	DESCRIPTION	BAR/QTY.
1	228068_REV1	M10 SPRING CLIP	2
2	228076_REV1	CLEVIS SHORT 10MM	2
3	230211_REV0	STEERING BAR W.A. (G-SERIES)	1
4	SP01033_REV0	ROD M10 X 75	2
5	SP02013_REV0	NUT M10 LOCK (THIN)	4

PREMIER NOTE: SWAP ITEM 3 FOR: 230210 - STEERING BAR W.A (PREMIER)

DECALS



ITEM NO.	PART NUMBER	DESCRIPTION	DECAL/QTY.
1	B32902_REV1	DECAL DENNIS	1
2	B32903_REV0	DECAL UNION JACK	2
3	D1871_REV1	RIVET 3.2 X 6	2
4	J20297_REV2	SERIAL NO PLATE (DENNIS)	1



DENNIS, Ashbourne Road, Kirk Langley, Derbyshire, DE6 4NJ, England

**Tel: +44 (0) 1332 824 777
Fax: +44 (0) 1332 824 525**

**Email: sales@dennisuk.com
Email: spares@dennisuk.com**

www.dennisuk.com